



## Borg-Warner ( Schwitzer ) Index

Cross reference Schwitzer to Turbo International pages 1 - 10

Service kits by model pages 11 - 42

Journal Bearings see journal bearing section

Piston Rings see piston ring section

### Schwitzer service kits by turbo model

Turbo Model	Kit page no
S1B	11-12
S2A	13-14
S2B wide bearing	15-16
S2B narrow bearing	17-18
S2D	19-20
S2E wide bearing	15-16
3LD	21-22
3LM	23-24
S3	27-28
S3A	27-28
S3B	29-30
4LE	31-32
4LF	31-32
4LG	31-32
4LGK	31-32
4LGZ	31-32
4LHR	25-26
S4	33-34
S4D	33-34
S4T	35-36
S76	23-24
S100	11-12
S200	37-38
S300	39-40
S400	41-42
S500	35-36



## CROSS REFERENCE - Borg Warner (Schwitzer) to Turbo International

OEM Part No.	Turbo International Part No.	Description	Turbo Model Application
	7-B-0674	SERVICE KIT	H2B
	7-C-1271	SERVICE KIT	4LGK/4LGZ
	7-C-3515	SERVICE KIT	S4D
	7-C-3645	SERVICE KIT	S3A
	8-C-0901	JOURNAL BEARING STD/5	3LM
	8-C-0902	JOURNAL BEARING STD/10	3LM
	8-C-0903	JOURNAL BEARING 5/STD	3LM
	8-C-0904	JOURNAL BEARING 5/5	3LM
	8-C-0905	JOURNAL BEARING 5/10	3LM
	8-C-0907	JOURNAL BEARING 10/5	3LM
	8-C-0908	JOURNAL BEARING 10/10	3LM
	8-C-0909	JOURNAL BEARING 15/STD	3LM
	8-C-1394	JOURNAL BEARING 20/5	3LM
	8-C-1395	JOURNAL BEARING 20/10	3LM
	8-C-1399	JOURNAL BEARING 10/STD	S2A
	8-C-1400	JOURNAL BEARING 20/STD	S2A
	8-C-1401	JOURNAL BEARING 10/10	S2A
	8-C-1402	JOURNAL BEARING STD/10	S2A
	8-C-1532	PISTON RING T/END 10/STD	3LM
	8-C-1552	PISTON RING T/END STD/10	3LM
	8-C-1553	PISTON RING T/END STD/20	3LM
	8-C-1667	JOURNAL BEARING, GROOVED I/D & END, 10/20	4HD/4MD
	8-C-1681	PISTON RING C/END 10/STD	3LM
	8-C-1683	PISTON RING T/END 10/10	3LM
	8-C-1684	PISTON RING T/END 10/20	3LM
	8-C-1686	PISTON RING C/END 10/STD	4HD/MD
	8-C-1688	PISTON RING T/END 10/STD	4HD/MD
	8-C-1689	PISTON RING T/END STD/10	4HD/MD
	8-C-1690	PISTON RING T/END 10/10	4HD/MD
	8-C-1691	PISTON RING T/END STD/20	4HD/MD
	8-C-1692	PISTON RING T/END 10/20	4HD/MD
	8-C-1746	JOURNAL BEARING, GROOVED END ONLY, 10/20	4HD/4MD
	8-C-1770	PISTON RING T/E 10/STD	S2A/S2B
	8-C-1773	PISTON RING C/E 10/STD	S2A/S2B
	8-C-1774	PISTON RING C/E 10/STD	S3A
	8-C-1775	PISTON RING C/E 10/STD	S4/S4A/S4D/S
	8-C-2024	JOURNAL BEARING, 0.341" wide, STD/5	S2B
	8-C-2025	JOURNAL BEARING, 0.341" wide, STD/10	S2B
	8-C-2026	JOURNAL BEARING, 0.341" wide, 5/STD	S2B
	8-C-2027	JOURNAL BEARING, 0.341" wide, 5/5	S2B
	8-C-2028	JOURNAL BEARING, 0.341" wide, 5/10	S2B
	8-C-2029	JOURNAL BEARING, 0.341" wide+E1632, 10/STD	S2B
	8-C-2030	JOURNAL BEARING, 0.341" wide, 10/5	S2B
	8-C-2031	JOURNAL BEARING, 0.341" wide, 10/10	S2B
	8-C-2037	PISTON RING T/END 10/STD	S3/S4
	8-C-2095	JOURNAL BEARING, STD/10	S3A
	8-C-2096	JOURNAL BEARING, 10/STD	S3A



## CROSS REFERENCE - Borg Warner (Schwitzer) to Turbo International

OEM Part No.	Turbo International Part No.	Description	Turbo Model Application
	8-C-2097	JOURNAL BEARING, 10/10	S3A
	8-C-2098	JOURNAL BEARING, 20/STD	S3A
	8-C-2099	JOURNAL BEARING, 20/10	S3A
	8-C-2267	JOURNAL BEARING, GROOVED I/D & END, STD/20	4HD/4MD
	8-C-2292	JOURNAL BEARING, GROOVED I/D & END, 20/20	4HD/4MD
	8-C-2392	JOURNAL BEARING STD/5	S2B
	8-C-2393	JOURNAL BEARING STD/10	S2B
	8-C-2394	JOURNAL BEARING 5/STD	S2B
	8-C-2395	JOURNAL BEARING 5/5	S2B
	8-C-2396	JOURNAL BEARING 5/10	S2B
	8-C-2397	JOURNAL BEARING 10/STD	S2B
	8-C-2398	JOURNAL BEARING 10/5	S2B
	8-C-2399	JOURNAL BEARING 10/10	S2B
	8-C-2414	JOURNAL BEARING STD/10	S1B
	8-C-2415	JOURNAL BEARING 10/STD	S1B
	8-C-2416	JOURNAL BEARING 10/10	S1B
	8-C-2920	PISTON RING T/END STD/10	S3A/S3B/S4/S
	8-C-2921	PISTON RING T/END STD/20	S3A/S3B/S4/S
	8-C-2949	PISTON RING T/END STD/10	S2A
	8-C-2951	PISTON RING T/END 10/STD	S2A
	8-C-2952	PISTON RING T/END 10/10	S2A
	8-C-2953	PISTON RING T/END 10/20	S2A
	8-C-3030	JOURNAL BEARING, GROOVED END ONLY, 20/20	4HD/4MD
	8-C-3045	JOURNAL BEARING STD/20	3LM
	8-C-3046	JOURNAL BEARING 15/5	3LM
	8-C-3047	JOURNAL BEARING 15/15	3LM
	8-C-3090	PISTON RING T/END STD/10	S4H
	8-C-3091	PISTON RING C/END 10/10	S4H
	8-C-3092	PISTON RING C/END STD/20	S4H
	8-C-3101	PISTON RING C/END 10/20	S4H
	8-C-3102	PISTON RING C/END STD/10	S4H
	8-C-3104	PISTON RING C/END STD/20	S4H
	8-C-3111	PISTON RING C/END STD/10	S2A
	8-C-3112	PISTON RING C/END 10/10	S2A
	8-C-3113	PISTON RING C/END STD/20	S2A
	8-C-3114	PISTON RING C/END 10/20	S2A
	8-C-3386	JOURNAL BEARING, STD/5	S300
	8-C-3387	JOURNAL BEARING, STD/10	S300
	8-C-3388	JOURNAL BEARING, 5/STD	S300
	8-C-3389	JOURNAL BEARING, 5/5	S300
	8-C-3390	JOURNAL BEARING, 5/10	S300
	8-C-3391	JOURNAL BEARING, 10/STD	S300
	8-C-3392	JOURNAL BEARING, 10/5	S300
	8-C-3393	JOURNAL BEARING, 10/10	S300
	8-C-3452	JOURNAL BEARING, GROOVED END ONLY, STD/20	4HD/4MD
	8-C-3537	JOURNAL BEARING STD/15	3LM
	8-C-3579	PISTON RING T/END STD/10	S3B



## CROSS REFERENCE - Borg Warner (Schwitzer) to Turbo International

OEM Part No.	Turbo International Part No.	Description	Turbo Model Application
	8-C-3623	JOURNAL BEARING, 5/STD	S200
	8-C-3624	JOURNAL BEARING, 10/STD	S200
	8-C-3625	JOURNAL BEARING, 20/STD	S200
	8-C-3626	JOURNAL BEARING, 5/5	S200
	8-C-3627	JOURNAL BEARING, 10/10	S200
	8-C-3700	JOURNAL BEARING STD/5	S200
	8-C-3701	JOURNAL BEARING STD/10	S200
	8-C-3744	JNL.BRG, NON-GROOVED, RAD.DRILLED HOLES, STD/5	4HD/4MD
	8-C-3746	JNL.BRG, NON-GROOVED, RAD.DRILLED HOLES, 5/STD	4HD/4MD
	8-C-3748	JNL.BRG, NON-GROOVED, RAD.DRILLED HOLES, 5/5	4HD/4MD
	8-C-3775	JOURNAL BEARING, 10/STD	S400/S410W
	8-D-2023	JOURNAL BEARING, 10/STD	K03/K04
	8-C-2787	JOURNAL BEARING 5/STD	S3B
125647	8-B-0391	PISTON RING T/END STD	3LD
125647	8-C-1685	PISTON RING C/END STD	4HD/MD
125647	8-C-1687	PISTON RING T/END STD	4HD/MD
127305	8-B-0077	RETAINING RING, INSERT	3"/VARIOUS
128936	8-C-1772	PISTON RING C/E STD	S3A
129119	8-A-0696	GASKET, OIL INLET	VARIOUS
129119	8-C-3415	GASKET, OIL INLET	S2B
129120	8-B-3119	GASKET, OIL OUTLET	4MF
129533	8-B-0047	RETAINING RING	4"
129577	8-B-0527	PISTON RING C/END STD	4LGK
130282	8-B-0517	RETAINING RING, J/BRG	4LE/HT3B
132040	8-A-0987	GASKET, TURBINE INLET, SINGLE PORT	
132040	8-C-3419	GASKET, TURBINE INLET, SINGLE PORT	S3A
132044	8-A-0271	GASKET, TURBINE INLET, SINGLE PORT NARROW	3LM/3LD
132044	8-C-3416	GASKET, TURBINE INLET, SINGLE PORT NARROW	S2B
135209	8-B-0387	PISTON RING T/END STD	HT3B/HC3B
137943		USE 140964	
138363	8-B-0076	JOURNAL BEARING STD	4"/Various
139055	8-B-0045	JNL.BRG, NON-GROOVED, RAD.DRILLED HOLES, STD	4HD/4MD
139265	8-B-3089	O RING, C/END	4HD/4MD
139572	8-B-0982	THRUST SPACER	HT3B
140964	8-C-0835	THRUST BEARING	4"/Various
141073	8-B-0397	LOCKNUT, SHAFT	4MF
141525	8-B-0078	THRUST RING	3LD
142228	8-B-0390	O RING, C/END	4LE/HT3B
142229	8-B-0396	OIL CONTROL SLEEVE	4LE
142869	8-C-1196	JOURNAL BEARING, GROOVED END ONLY, STD	4HD/4MD
144079	8-B-0731	THRUST BEARING	3LD
144080	8-B-1025	JOURNAL BEARING STD	3LD
144315		USE 182250	
144334	8-B-0052	THRUST COLLAR	HT3B
146608	8-C-2985	O RING, B/HSG.	S3B/3LK
146740		USE 192871	
146808	8-B-0387	PISTON RING T/END STD	4LE



## CROSS REFERENCE - Borg Warner (Schwitzer) to Turbo International

OEM Part No.	Turbo International Part No.	Description	Turbo Model Application
147837	8-A-0062	GASKET, OIL INLET	VARIOUS
147837	8-C-3413	GASKET, OIL INLET	S1A, S1B, S2A
148062	8-B-0063	GASKET, OIL OUTLET	3LD
148062	8-C-3418	GASKET, OIL OUTLET	S3A
148225	8-B-0890	JOURNAL BEARING 10/10	4LE/HT3
148337	8-B-1584	OIL SLINGER	4LE
151242	8-B-0064	O RING, OIL PLATE	3"/4"/HT3B
151242	8-C-3501	O RING, SEAL PLATE	3"/4"/HT3B/S4
152408	8-B-0052	THRUST COLLAR	HT3B
155290	8-C-1366	SPACER SLEEVE	3LKS
155433	8-C-1368	WEAR RING	3LKS
155434		USE 186135	
157458	8-C-3749	JNL.BRG, NON-GROOVED, RAD.DRILLED HOLES, 10/10	4HD/4MD
157602	8-B-3119	GASKET, OIL OUTLET	HT3B
157962	8-C-0066	FLINGER SLEEVE	3LM
158144	8-C-0067	THRUST BEARING	3LM
158146	8-C-1741	JOURNAL BEARING, GROOVED END ONLY, 10/STD	4HD/4MD
158147	8-B-0888	JOURNAL BEARING 10/STD	4LE/HT3
166084	8-B-0980	OIL SEAL PLATE	HT3B
166118	8-C-1226	JOURNAL BEARING 10/STD	S4A & D
166119	8-C-1227	JOURNAL BEARING 20/STD	S4A & D
166120	8-C-1225	JOURNAL BEARING 10/10	S4A & D
166121	8-C-1228	JOURNAL BEARING STD/10	S4A & D
166122	8-C-1229	JOURNAL BEARING 20/10	S4A & D
166193	8-C-1725	GASKET, OIL OUTLET	S3B
166496	8-C-2986	LOCKNUT, SHAFT, L/HAND THREAD	S3/S3A/S3B
167048	7-C-3491	CAPSCREW & LOCKWASHER, C/END	S300
167416	8-C-3385	JOURNAL BEARING STD	S300
167492	8-C-3482	LOCKNUT, SHAFT, L/HAND THREAD	S2B/S200
167541	8-C-3490	LOCKNUT, SHAFT, L/HAND THREAD	S300
167546	8-C-3488	THRUST SLEEVE	S300
167548	8-C-3487	RETAINING RING, J/BRG.	S300
167558	8-C-3489	THRUST BEARING	S300
167657	8-C-3479	JOURNAL BEARING STD	S200
167743	8-C-3481	THRUST BEARING	S200
167747	8-C-2990	PISTON RING STD	S100/S200+F2
167748	8-C-2991	PISTON RING STD	S100
167750	8-C-3480	THRUST SLEEVE	S200
167785	8-C-3498	THRUST SLEEVE	S400/S410W
167786	8-C-3499	THRUST BEARING	S400/S410W
167787	8-C-3496	JOURNAL BEARING STD	S400/S410W
167788	8-C-3495	RETAINING RING, J/BRG.	S400/S410W
167799	8-C-3502	LOCKNUT, SHAFT, L/HAND THREAD	S400/S410W
168984		USE 318372	
168984	7-A-0608	SERVICE KIT, STEP BORE	TA31/TA35/TO
181750		USE 318364	
181751		USE 318350	



## CROSS REFERENCE - Borg Warner (Schwitzer) to Turbo International

OEM Part No.	Turbo International Part No.	Description	Turbo Model Application
181751	7-C-0815	SERVICE KIT	4LE/4LF
181929	8-C-0068	JOURNAL BEARING STD	3LM
182042	8-D-0406	PISTON RING C/END STD	K26
182250	8-B-1129	JOURNAL BEARING 20/STD	4LE
182252	8-C-0906	JOURNAL BEARING 10/STD	3LM
182253	8-C-1270	JOURNAL BEARING 20/STD	3LM
182255	8-C-1273	JOURNAL BEARING 20/STD	3LDA
182258	8-C-3747	JNL.BRG, NON-GROOVED, RAD.DRILLED HOLES, 10/STD	4HD/4MD
182260	8-C-1743	JOURNAL BEARING, GROOVED END ONLY, 20/STD	4HD/4MD
182421	8-D-1708	BOLT	K26
182438	8-C-1369	CAP SCREW	3LKS
182561		USE 188379	
182562		USE 138363	3LKS
182668		USE 192510	
183188	8-C-1378	FILTER	4HD
183211	7-C-0787	SERVICE KIT	4LE/4LF/4MF
183223	7-C-0670	SERVICE KIT	3LM
183225		USE 318367	
183472		USE 166084	
184798	8-C-3093	PISTON RING T/END 10/20	S4H
185299		USE 5223-711-0002	
185319	8-B-0064	O RING, OIL PLATE	3LD
185727	8-B-0089	LOCKNUT	HC3
185854	8-B-0884	JOURNAL BEARING STD/10	4LE/HT3
185856	8-C-1744	JOURNAL BEARING, GROOVED END ONLY, STD/10	4HD/4MD
185857	8-C-1745	JOURNAL BEARING, GROOVED END ONLY, 20/10	4HD/4MD
185859	8-C-1497	JOURNAL BEARING, GROOVED END ONLY, STD/10	4HD/4MD
185860	8-C-1665	JOURNAL BEARING, GROOVED I/D & END, 20/10	4HD/4MD
186135	8-B-0395	PISTON RING T/END STD	S2/3FD
186135	8-C-1682	PISTON RING T/END,5/STD-C/END STD	3LM/S2B
186147		USE 142869	3LKS
186147	8-C-1196	JOURNAL BEARING, GROOVED END ONLY, STD	4HD/4MD
186148		USE 192871	
186790		USE 444506-0001	
186790	8-A-1213	THRUST COLLAR, 2 X 8 HOLES	T4
186791	8-A-0252	LOCKPLATE, B/HOUSING	TO4
186794	8-A-0256	JOURNAL BEARING STD	T3/4
186796	8-A-0149	RETAINING RING, J/BRG	TB03/TO4B
186830	8-A-0240	THRUST BEARING, 3 HOLE	T3/4
186835	8-A-0254	LOCKPLATE, C/END	TO4/TO4B
186838	8-A-0253	CLAMP, C/END	TO4
186839	8-A-0241	CLAMP, T/END	TB03/TO4B
186840	8-A-0138	SEAL RING, S/PLATE, VITON i/d 2.183"	Various
186841	8-A-1555	PISTON RING T/END STD	T3
186841	8-C-1748	PISTON RING T/END STD	S2A
186841	8-C-3477	PISTON RING C/END STD	S300
186842	8-C-1749	PISTON RING C/END STD	S2A/S2B



## CROSS REFERENCE - Borg Warner (Schwitzer) to Turbo International

OEM Part No.	Turbo International Part No.	Description	Turbo Model Application
186844	8-C-1618	BOLT, T/END	S2B
186847	8-A-0242	LOCKPLATE, T/END	TO4/TO4B
186879	4-A-0323	BEARING HOUSING, OIL COOLED	T3/T4
186880	4-A-1331	BEARING HOUSING, OIL COOLED	T3/T4
186881	4-A-0323	BEARING HOUSING, OIL COOLED	T3/T4
186882	4-A-1331	BEARING HOUSING, OIL COOLED	T3/T4
186882	4-A-2047	BEARING HOUSING, OIL COOLED	T3
186891	8-C-0835	THRUST BEARING	4"/Various
187197		USE 318354	
187197	7-B-0981	SERVICE KIT	4LHR
187248	8-C-1366	SPACER SLEEVE	3LKS
188379	8-B-0088	THRUST BEARING	3LD
188470	8-C-0069	GASKET, BACKPLATE/BEARING HOUSING	3LM
188956	8-B-0087	THRUST BEARING	HT3B
188985	8-C-2573	JOURNAL BEARING STD	S4A/H
188990	8-A-0137	RETAINING RING, J/BRG	TV/T12/T18
189906	8-C-2094	JOURNAL BEARING, STD	S3A
189909	8-C-1728	THRUST RING	S3B
191750	8-B-0070	PISTON RING C/END STD DUCTILE	3LM
191975		USE 318368	
191996	8-C-3000	LOCKNUT	S4D
192510	8-A-0164	LOCKNUT, SHAFT	3LM/3LD
192511	8-B-0397	LOCKNUT, SHAFT	4MF
192512	8-A-0163	LOCKNUT, SHAFT	TB03/TO4B
192871	8-C-1197	JOURNAL BEARING, GROOVED I/D & END, STD	4HD/4MD
192879	8-C-1626	JOURNAL BEARING, GROOVED I/D & END, 10/10	4HD/4MD
192880	8-C-1496	JOURNAL BEARING, GROOVED I/D & END, 10/STD	4HD/4MD
192881	8-C-1658	JOURNAL BEARING, GROOVED I/D & END, 20/STD	4HD/4MD
193710	8-C-1245	O RING	S2A
194279	8-C-1579	LOCKNUT, SHAFT	S2B
194281	8-C-1246	O RING	S2A
194581	8-C-1576	CLAMP T/END	S2B
194658	8-C-1730	O RING	S3B
194798	8-C-1726	PISTON RING T/END STD	S3A/S3B/S4/S
194914	8-C-1247	JOURNAL BEARING STD	S2A
194931	8-C-1704	JOURNAL BEARING, 0.341" wide, STD	S2B
194932	8-C-1468	SPACER RING	S2B
196007	8-B-0098	FLINGER SLEEVE	HT3B
196009	8-B-0979	OIL BAFFLE	HT3B
196021	8-C-1729	RETAINING RING	S3B
196284		USE 197752	
196284	8-C-3770	THRUST BEARING	S3A/S3B
196424	8-C-3485	BOLT, T/END	S2B/S200/S30
196457	8-C-1246	O RING	S200/S300
197275	8-C-1248	SPACER	S2A
197276	8-C-1915	THRUST WASHER	S2D
197470	8-C-1731	WEAR WASHER	S3B





## CROSS REFERENCE - Borg Warner (Schwitzer) to Turbo International

OEM Part No.	Turbo International Part No.	Description	Turbo Model Application
197651	8-B-1653	INSERT	4LE
198291	8-C-3745	JNL.BRG, NON-GROOVED, RAD.DRILLED HOLES, STD/10	4HD/4MD
198354	8-C-1393	JOURNAL BEARING, GROOVED, 10/10	4MD
198689	8-C-1249	LOCKNUT, V CLAMP	S2A
199113	8-C-1216	JOURNAL BEARING STD	S3B
199909	8-C-1230	WASHER, SPEED CONTROL	S4A & D
199910	8-C-1217	JOURNAL BEARING STD	S4
199973	8-C-1220	JOURNAL BEARING 10/STD	S3B
199974	8-C-1221	JOURNAL BEARING 20/STD	S3B
199975	8-C-1219	JOURNAL BEARING 10/10	S3B
199976	8-C-1222	JOURNAL BEARING STD/10	S3B
199977	8-C-1223	JOURNAL BEARING 20/10	S3B
310042	4-A-0323	BEARING HOUSING, OIL COOLED	T3/T4
310062	7-D-1931	SERVICE KIT	4LGZ
310063		USE 318372	
310063	7-A-0608	SERVICE KIT, STEP BORE, l/h & r/h locknuts	TA31/TA35/TO
310063	7-A-2436	SERVICE KIT	TO4B
310278	8-B-0527	PISTON RING C/END STD	HC3B/HT4B
310279	8-C-1649	PISTON RING C/END STD	3LM
310291	8-C-1370	S/WASHER	3LKS
310503	8-B-0391	PISTON RING	4MF
310628	7-E-0656	SERVICE KIT	TCO5/6
310668	8-E-0706	O-RING, CARBON SEAL ø 0.364"x0.07"	TCO4
310671	7-E-0649	SERVICE KIT, S/PLATE 10mm HOLE	TC04
310694	8-A-0709	GASKET, TURBINE INLET, DUAL PORT WIDE	TO4
310694	8-C-3417	GASKET, TURBINE INLET, DUAL PORT WIDE	S2A/S2B
310719	8-C-2998	O RING, INSERT	S3/S3A
310724	8-C-1351	PISTON RING C/E STD	4LGZ/S4D
310797	7-C-1864	SERVICE KIT	3LM
310871	8-B-0423	O RING, S/PLATE	H2C/H2B
310871	8-C-2999	O RING	S4D
310938	8-D-1516	WASHER	K26
310946	8-D-0670	JOURNAL BEARING STD	K26
310947	8-D-0413	OIL SHIELD	K26
310979	8-D-0917	BOLT, HEX HEAD, M6 x 1.0-6H x 12 mm	K16/KO3/KO4
310987	8-C-1347	THRUST COLLAR	S2A
310996	8-D-0412	BOLT, B/HOUSING	K26
311013	7-D-1355	SERVICE KIT	K28
311020	8-C-1379	RETAINING RING, J/BRG	S2B
311300	7-C-1255	SERVICE KIT	S2A
311438	4-A-0323	BEARING HOUSING, OIL COOLED	T3/T4
311496	8-A-0270	GASKET, OIL OUTLET	TO4B
311496	8-C-3412	GASKET, OIL OUTLET	S1A, S1B, S2A
311534	7-C-1583	SERVICE KIT	S2B
311585	8-C-1348	GASKET, OIL OUTLET	S2A
311588	8-C-1251	SEYSCREW	S2A
311589	8-C-1252	LOCKNUT	S2A





## CROSS REFERENCE - Borg Warner (Schwitzer) to Turbo International

OEM Part No.	Turbo International Part No.	Description	Turbo Model Application
311698	8-C-1349	GASKET, TURBINE INLET	S2A
311699	8-C-1350	GASKET, OIL OUTLET	S2A
311708	5-A-1210	BACKPLATE, DYNAMIC	T3/T4
311740	8-A-0257	JOURNAL BEARING STD	VARIOUS
311750	8-B-0397	LOCKNUT, SHAFT	4MF
311754	8-D-0407	O RING, C/END	K26
311857	8-C-2982	PISTON RING C/END STD	S1B/S100
311876	8-A-0345	LOCKPLATE, BACKPLATE	TV SERIES
311888	8-A-0028	THRUST COLLAR, 3/8" DIA. SHAFT	T18/THO8A
311889	8-A-0265	THRUST SPACER	TV60/80/THO8
311899	8-A-0244	WASHER, WEAR	TV/T18
311901	8-A-0164	LOCKNUT, SHAFT	TV/12/18
311902	8-A-0165	LOCKNUT, SHAFT, 3/8"	TV61/63
311903	8-A-0167	BOLT, B/HOUSING	VARIOUS
311979	8-A-0172	BOLT	T4
311994	7-C-1287	SERVICE KIT	S2A
312336	8-A-0334	CLAMP, C/END	TBO3
312344	8-A-0156	BOLT, T/END, metric thread	TBO3
312345	8-A-0157	BOLT, C/END, metric thread	TBO3
312346	8-A-0155	BOLT, B/HOUSING, metric thread	TBO3
312347	8-A-0286	GASKET, COMP.HSG ./BRG.HSG.	TBO3
312379	4-A-1333	BEARING HOUSING, OIL COOLED	T3
312431	7-A-0830	SERVICE KIT	TO4
312455	8-C-2391	JOURNAL BEARING STD	S2B
312617	8-A-0271	GASKET, TURBINE INLET, SINGLE PORT NARROW	S2A
312617	8-C-3414	GASKET, TURBINE INLET, SINGLE PORT NARROW	S2B
312638	7-C-1403	SERVICE KIT	S3B
312690	7-A-0014	SERVICE KIT	TA31
312690	7-A-0802	SERVICE KIT	TA/TB/T3
312696	7-C-1733	SERVICE KIT	S3B
312697	8-D-0406	PISTON RING C/END STD	K26
312719	8-C-1254	THRUST BEARING	S2A
312746	8-C-3201	GASKET, TURBINE INLET	S2A/S1B/S1A/
312758	8-C-2427	JOURNAL BEARING STD	S1B
312868	8-C-1462	PISTON RING T/E STD	S4D
313015	7-C-3484	CAPSCREW & LOCKWASHER, C/END	S200
313248	8-A-0240	THRUST BEARING, 3 HOLE	T3/4
313286	8-C-3483	O RING Ø	S200
313566	7-D-1930	SERVICE KIT	K27
313627	8-D-0403	THRUST BEARING	K26
313765	8-C-3492	O RING	S300
313783	8-C-2989	PISTON RING STD	S100
313805	7-C-1461	SERVICE KIT	S2D
313861	8-C-2983	PISTON RING T/END STD	S2B/S2D
315320		USE 313805	
315377	8-C-3493	O RING	S300
315534	8-C-2992	PISTON RING STD	S100/S200



## CROSS REFERENCE - Borg Warner (Schwitzer) to Turbo International

OEM Part No.	Turbo International Part No.	Description	Turbo Model Application
315535	8-C-2993	PISTON RING STD	S300
315536	8-C-3497	PISTON RING T/END	S400/S410W
315962	8-B-0090	JOURNAL BEARING STD	HC5A/HT4B
315963	8-B-2425	THRUST BEARING, CLOCKWISE FLOW	HC5A
316065	8-B-0115	OIL DEFLECTOR	HC5A
316069	8-B-0114	SHIM, THRUST BEARING	HC5A
316074	8-B-0103	LOCKPLATE, T/END	HC5A
316077	8-B-0119	O RING, B/HSG., VITON, i/d 2.736"	H2A/HT4B/HC
316078	8-B-0116	SCREW, B/HSG.	HT4B/HC5A
316080	8-B-0092	RETAINING RING, J/BRG	HT4B/HC5A
316081	8-B-0527	PISTON RING C/END STD	HC3B/HT4B
316082	8-B-0108	PISTON RING T/END STD	HC5A
316093	7-B-0647	SERVICE KIT	HC5/HC5A
316193	8-C-2984	PISTON RING T/END STD	S3B
316328	8-C-3503	LOCKNUT, V BAND	4MD/HC3/S40
316557	8-C-2997	PISTON RING STD	S500
316616	8-B-0109	THRUST BEARING	H1A/H2C
316617	8-B-0085	JOURNAL BEARING STD	H2B/H2C
316618	8-B-0070	PISTON RING C/END STD DUCTILE	H2C
316619	8-B-0395	PISTON RING T/END STD	H2C/H2B
316620	8-B-0422	RETAINING RING, S/PLATE	H2C/H2B
316621	8-B-0795	LOCKPLATE	HC2
316622	8-B-0084	SCREW, T/BRG	H1A/H2C
316624	8-B-0086	LOCKWASHER, C/END	H2C
317324	8-C-3500	PISTON RING C/END STD	S400/S410W
317589	8-C-3504	PISTON RING T/END	S400
318350	7-C-1830	SERVICE KIT	4LGZ
318351	7-B-0642	SERVICE KIT, STEP BORE	4LG
318352	7-C-0983	SERVICE KIT	HT3B/4LHR
318352	7-C-3753	SERVICE KIT	HT3B
318354	7-B-0981	SERVICE KIT	4LHR
318355	7-C-1830	SERVICE KIT	4LGZ
318364	7-B-0730	SERVICE KIT	3LD/3LDJ
318366		USE 5223-711-0002	
318366		USE 523-711-0002	
318367	7-D-1358	SERVICE KIT	3LK
318368	7-C-0670	SERVICE KIT	3LM
318372	7-A-0830	SERVICE KIT	TO4
318372	7-A-2823	SERVICE KIT	TO4B
318377	7-C-2981	SERVICE KIT	S2A
318378	7-C-3512	SERVICE KIT, less thrust ring	S2B
318383	7-C-3478	SERVICE KIT	S200
318385	7-C-0670	SERVICE KIT	3LM
318386	7-C-1733	SERVICE KIT	S3B
318389	7-C-3513	SERVICE KIT	S3B
318391	7-C-3773	SERVICE KIT	S3A
318392	7-C-3772	SERVICE KIT	S3A

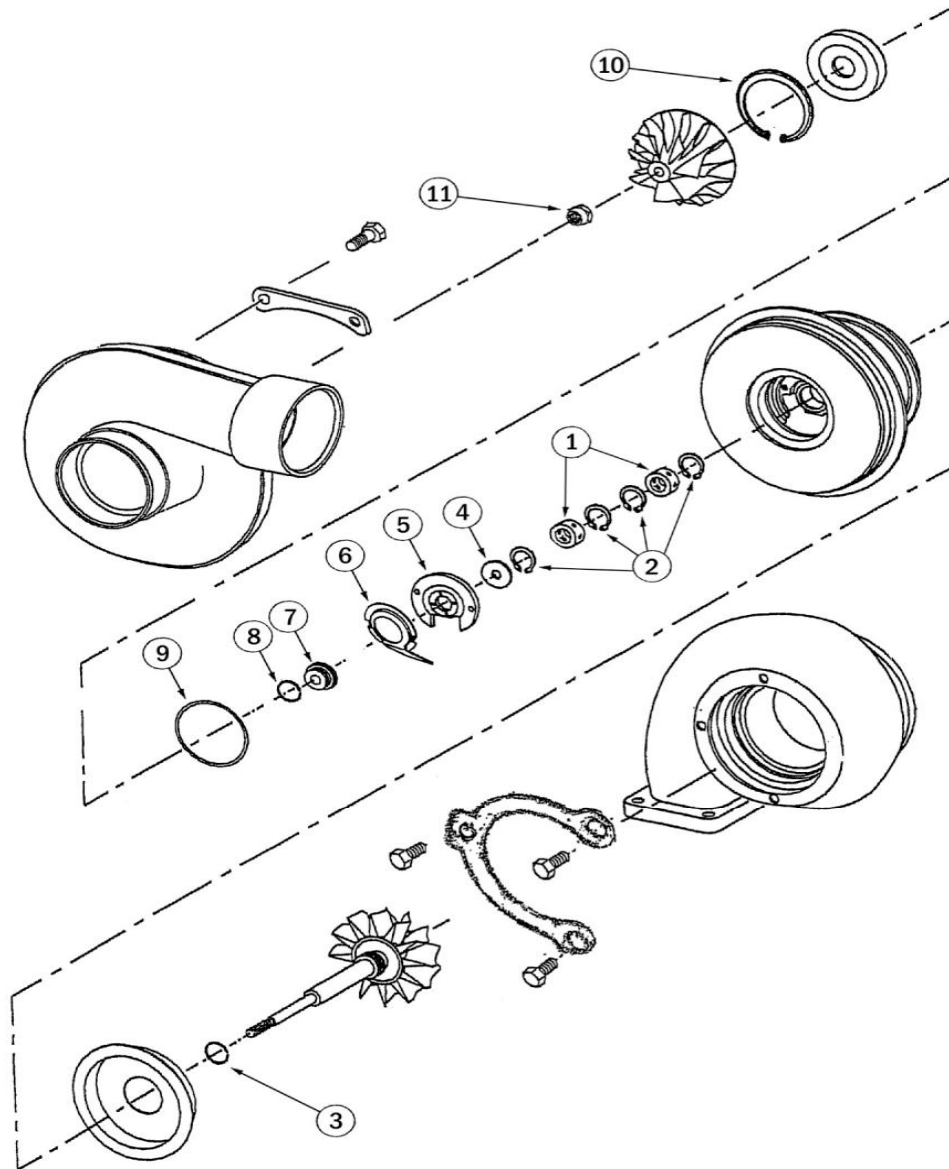


## CROSS REFERENCE - Borg Warner (Schwitzer) to Turbo International

OEM Part No.	Turbo International Part No.	Description	Turbo Model Application
318393	7-C-3486	SERVICE KIT	S300
318396	7-C-3494	SERVICE KIT	S400/S410W
318397	7-C-3494	SERVICE KIT	S400
318417	7-C-3197	GASKET KIT	S4T
318418	7-C-3198	GASKET KIT	S300
318419	7-C-3199	GASKET KIT	S2B
318421	7-C-3200	GASKET KIT	S2A/S1B/S1A/
510042		USE 318350	
510927	8-B-0523	LOCKNUT, V BAND	4MD/HC3
52786		USE 192510	

**S1B**

**S100**



*This illustration is intended only as a guide. The actual part or assembly may vary from one model to another.*



## SERVICE KIT - Schwitzer

S1B

S100

Item no.	Description	TI Part no.	Qty/ Turbo	TI Kit no.
				n/a

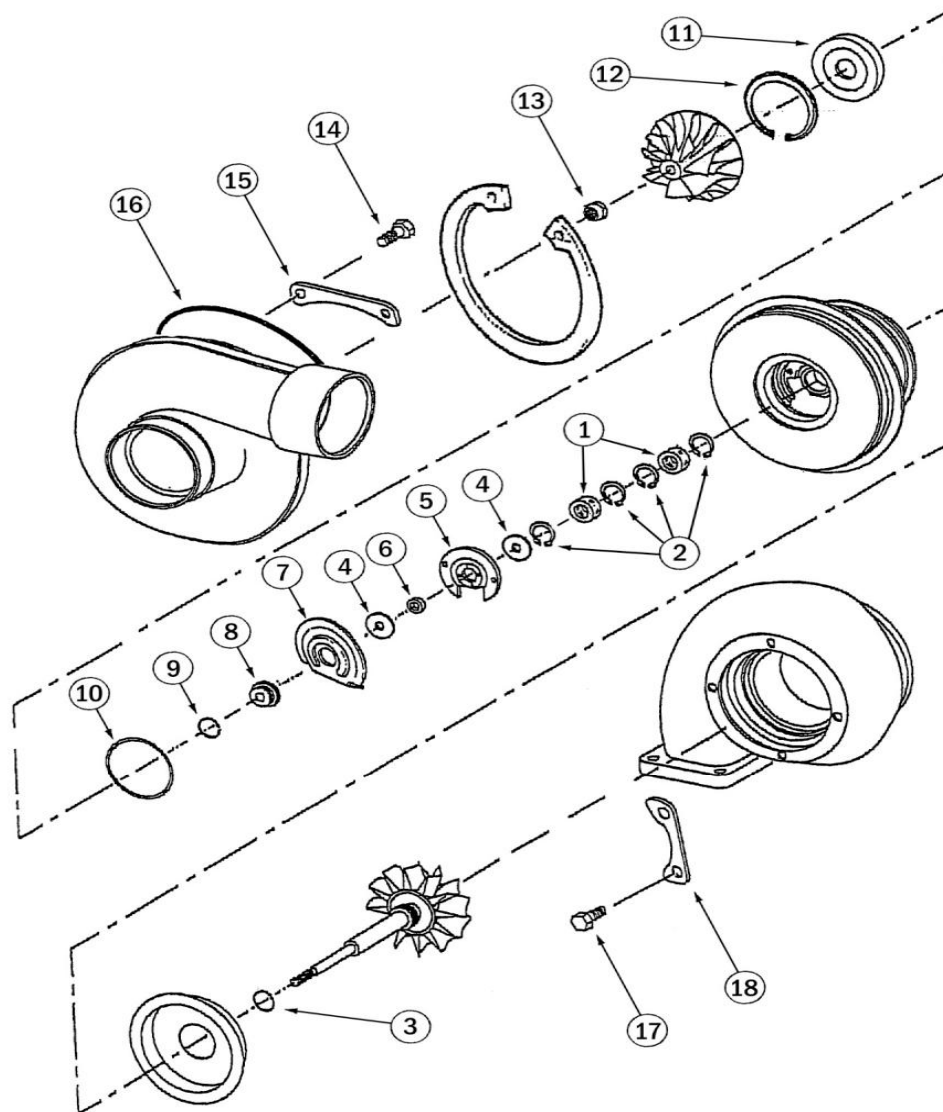
1	Journal bearing	8-C-2427	2	
2	Retaining ring, jnl/brg.	-	4	
3	Piston ring,t/end	8-C-1772	1	
4	Thrust sleeve	-	1	
5	Thrust bearing	-	1	
6	Oil deflector	-	1	
7	Flinger sleeve	-	1	
8	Piston ring, c/end	8-C-2982	1	
9	Seal ring, brg/hsg	-	1	
10	Retaining ring, insert	-	1	
11	Locknut, r/h thread	-	1	

See JOURNAL BEARING section for oversize & under-size parts - page 53

See PISTON RING section for oversize parts - page 58

See GASKET section

## S2A



*This illustration is intended only as a guide. The actual part or assembly may vary from one model to another.*



## SERVICE KIT - Schwitzer

S2A

Item no.	Description	TI Part no.	Qty/ Turbo	TI Kit no.
				7-C-2981
1	Journal bearing	8-C-1247	2	✓
2	Retaining ring, jnl/brg.	8-A-0149	4	✓
3	Piston ring, t/end	8-C-1462	1	✓
4	Thrust ring	8-C-1915	2	✓
5	Thrust bearing	8-C-1254	1	✓
6	Spacer sleeve	8-C-1248	1	-
7	Oil deflector	-	1	-
8	Flinger sleeve	-	1	-
9	Piston ring, c/end	8-C-1749	1	✓
10	Seal ring, insert	8-C-1246	1	✓
11	Insert	-	1	-
12	Retaining ring, insert	-	1	-
13	Locknut, r/h thread	8-A-0163	1	✓
13	Locknut, l/h thread	8-A-1869	1	✓
14	Bolt, c/end	-		
15	Clamp, c/end	-		
16	O ring, brg.hsg/c.hsg	8-C-1245	1	-
17	Bolt, t/end	-		
18	Clamp, t/end	-		
	Nut, v band	8-C-1249	1	✓

See JOURNAL BEARING section for oversize & under-size parts - page 54

See PISTON RING section for oversize parts - page 59

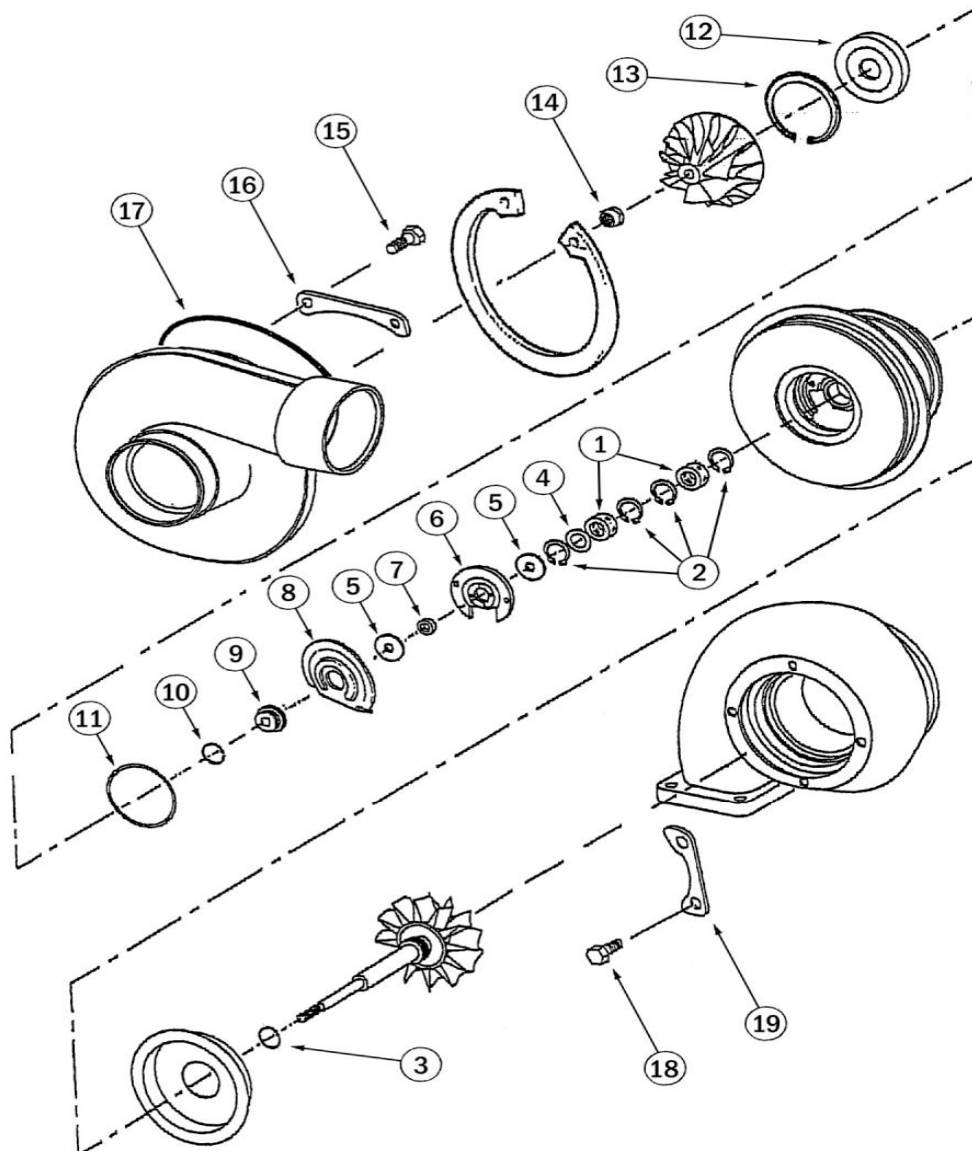
See GASKET section



**S2B**

**S2E**

wide bearing



*This illustration is intended only as a guide. The actual part or assembly may vary from one model to another.*



## SERVICE KIT - Schwitzer

S2B - wide bearing

S2E - wide bearing

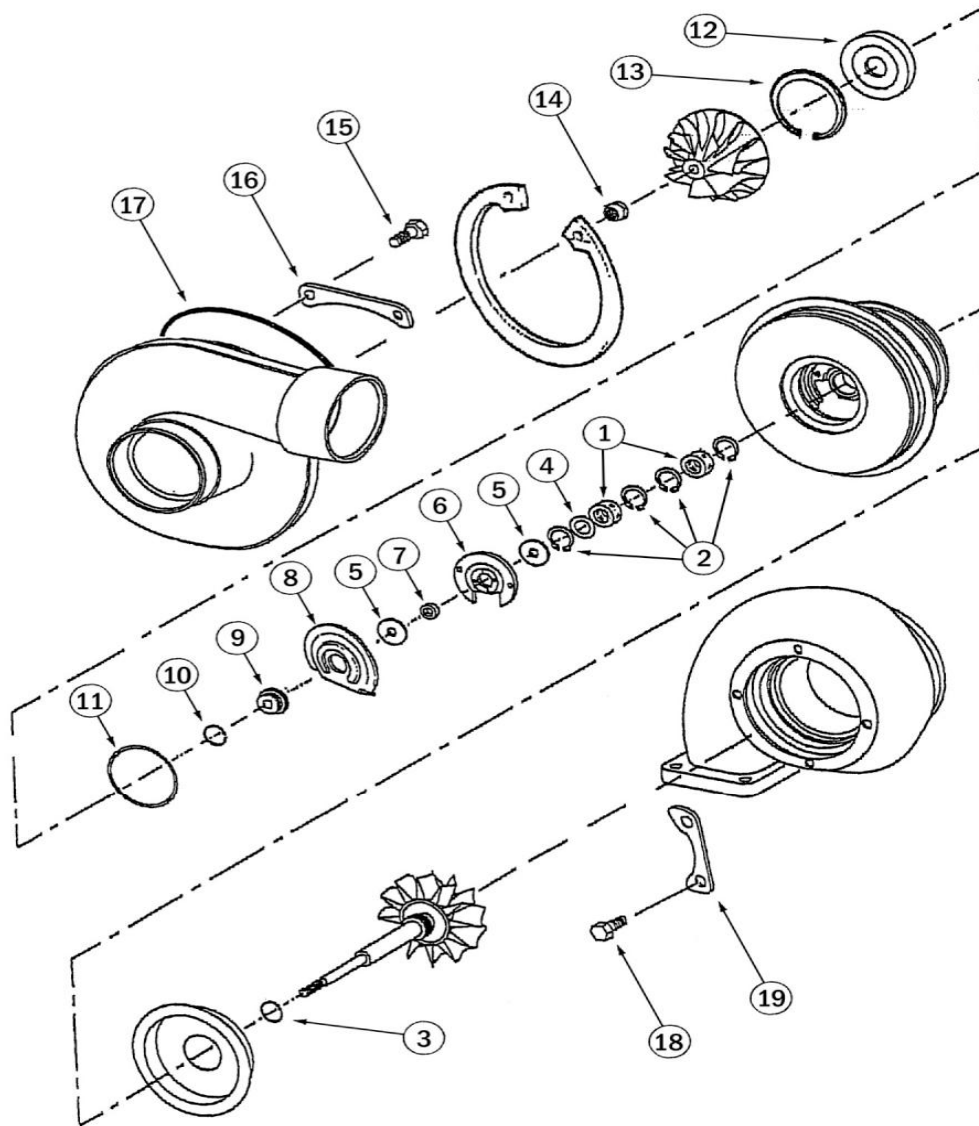
Item no.	Description	TI Part no.	Qty/ Turbo	TI Kit no.
				7-C-3512
1	Journal bearing, wide	8-C-2391	2	✓
2	Retaining ring, jnl/brg.	8-C-1379	4	✓
3	Piston ring, t/end	8-C-1682	1	✓
4	Spacer ring	8-C-1468	1	✓
5	Thrust ring	-	2	-
6	Thrust bearing S2B	8-C-1254	1	✓
6	Thrust bearing S2E	-	1	-
6	Thrust bearing S2B	-	1	-
7	Thrust ring	-	1	-
8	Oil deflector	-	1	-
9	Flinger	-		
10	Piston ring, c/end	8-C-1749	1	✓
11	Seal ring, insert	8-C-1246	1	✓
12	Insert	-		-
13	Retaining ring, insert	-	1	-
14	Locknut, l/h thread	8-C-1579	1	✓
14	Locknut, r/h thread	8-C-3482	1	✓
15	Bolt, c/end	8-C-3485	4	✓
16	Clamp, c/end	-		-
17	O ring	8-C-1245	1	✓
18	Bolt, t/end	8-C-1618	4	✓

See JOURNAL BEARING section for oversize & under-size parts - page 56

See PISTON RING section for oversize parts - page 59

See GASKET section

## S2B narrow bearing



*This illustration is intended only as a guide. The actual part or assembly may vary from one model to another.*



## SERVICE KIT - Schwitzer

### S2B - narrow bearing

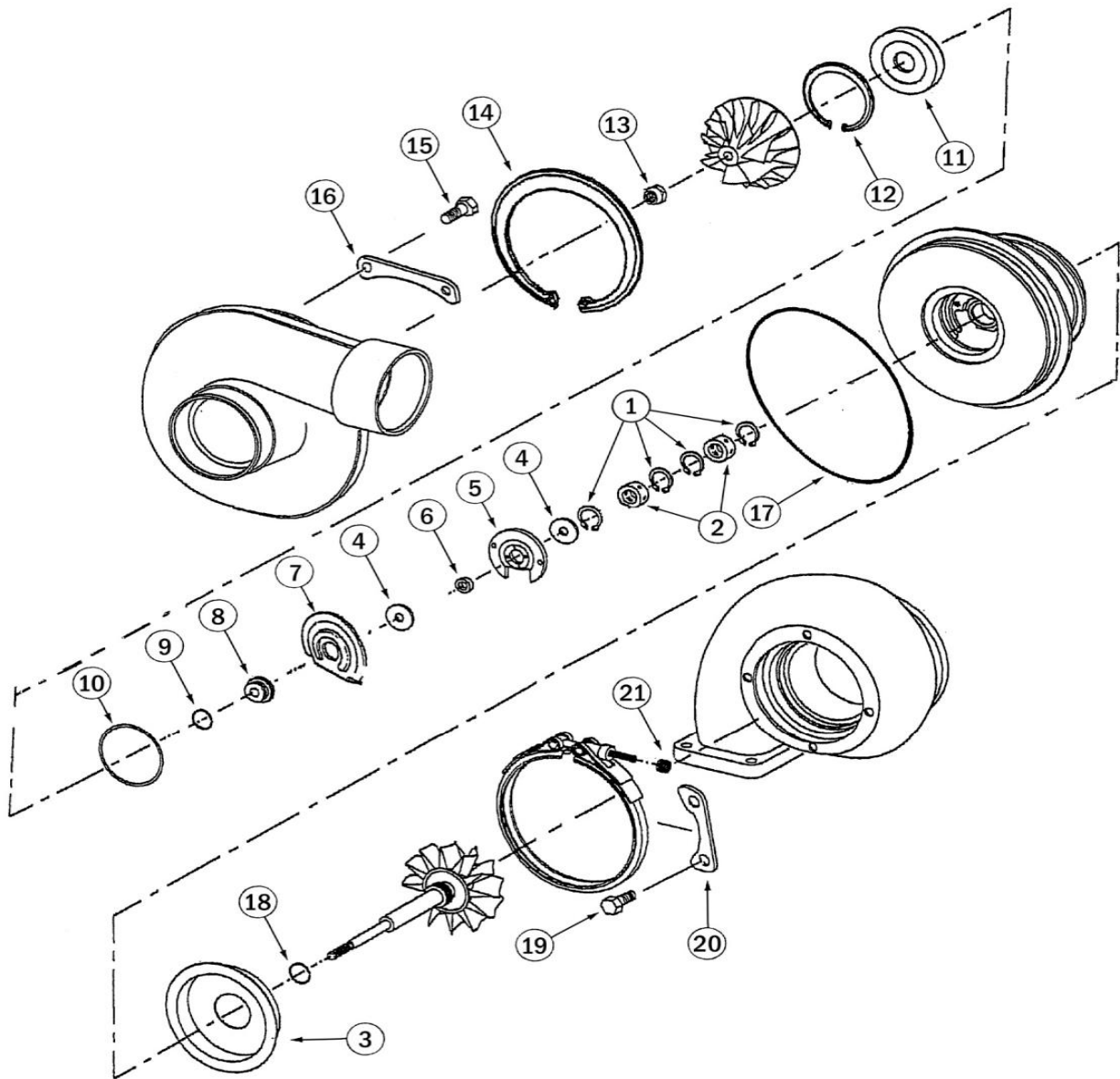
Item no.	Description	TI	Qty/ Turbo	TI Kit no.
		Part no.		7-C-1583
1	Journal bearing, narrow	8-C-1704	2	✓
2	Retaining ring, jnl/brg.	8-C-1379	4	✓
3	Piston ring, t/end	8-C-1682	1	✓
4	Wear washer	8-C-1468	2	✓
5	Thrust ring	-	2	-
6	Thrust bearing	8-C-1254	1	✓
7	Spacer sleeve			-
8	Oil deflector	-	1	-
9	Flinger sleeve	-		-
10	Piston ring, c/end	8-C-1749	1	✓
11	Seal ring, insert	8-C-1246	1	✓
12	Insert	-		-
13	Retaining ring, insert	-	1	-
14	Locknut, l/h thread	8-C-1579	1	-
15	Bolt, c/end	-		-
16	Clamp, c/end	-		-
17	O ring, brg.hsg/c.hsg	8-C-1245	1	-
18	Bolt, t/end	8-C-1618	4	✓
19	Clamp, t/end	8-C-1576	2	✓
	Gasket, oil inlet	8-C-3413	1	✓
	Gasket, oil outlet	8-C-1348	1	✓
	Gasket, t/inlet	8-C-3414	1	✓

See JOURNAL BEARING section for oversize & under-size parts - page 55

See PISTON RING section for oversize parts - page 59

See GASKET section

## S2D



*This illustration is intended only as a guide. The actual part or assembly may vary from one model to another.*



## SERVICE KIT - Schwitzer

S2D

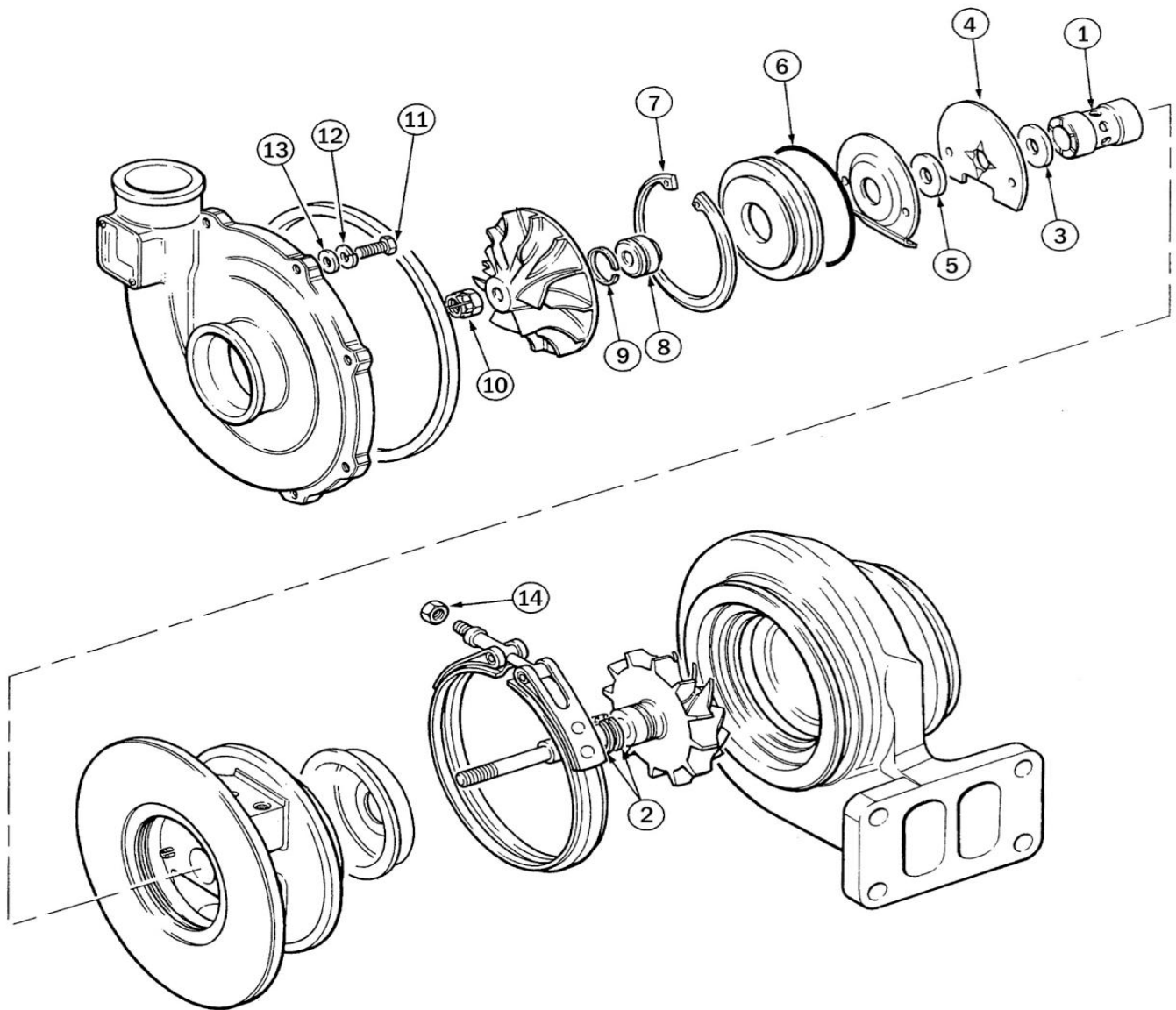
Item no.	Description	TI Part no.	Qty/ Turbo	TI Kit no.	
				7-C-2439	7-C-1461
1	Retaining ring, jnl/brg.	8-A-0149	4	✓	✓
2	Journal bearing	8-A-0256	2	✓	✓
3	Piston ring, t/end	8-C-1462	1	✓	✓
4	Thrust bearing	8-C-1254	1	✓	✓
5	Thrust ring	8-C-1915	1	✓	✓
6	Piston ring, c/end	8-C-1749	1	✓	✓
7	Seal ring, brg/hsg	8-C-1246	1	✓	✓
9	Locknut, r/h thread	8-A-0163	1	✓	✓
9	Locknut, l/h thread	8-A-1869	1	✓	-
10	Seal ring, c/end	8-C-1245	1	✓	-
11	Nut, v band	8-C-1249	1	✓	✓
	Gasket, oil inlet	8-A-0062	1	-	✓
	Gasket, oil outlet	8-C-1348	1	-	✓
	Gasket, t/inlet	8-C-1349	1	-	✓

See JOURNAL BEARING section for oversize & under-size parts - page 5

See PISTON RING section for oversize parts - page 59

See GASKET section

## 3LD



*This illustration is intended only as a guide. The actual part or assembly may vary from one model to another.*





## SERVICE KIT - Schwitzer

3LD

Item no.	Description	TI Part no.	Qty/ Turbo	TI Kit no.
				7-B-0730
1	Journal bearing	8-B-1025	1	✓
2	Piston ring, t/end,smooth bc	8-B-0391	2	✓
2	Piston ring, t/end,step bore	8-B-0387	1	✓
3	Thrust washer	8-B-0384	1	-
4	Thrust bearing	8-B-0731	1	✓
5	Thrust ring	8-B-0078	1	-
6	O ring, s/plate	8-B-0064	1	✓
7	Retaining ring, s/plate	8-B-0077	1	✓
8	Oil slinger	-	1	-
9	Piston ring, c/end	8-B-0391	3	✓
10	Locknut, shaft	8-B-0417	1	✓
11	Bolt, c/end	-	6	-
12	Lockwasher, c/end	8-B-0521	8	✓
13	Washer, c/end	8-B-0790	8	-
14	Locknut, V band	8-B-0523	2	✓
	Gasket, oil inlet	8-B-0093	1	✓
	Gasket, oil outlet	8-B-0094	1	✓
	Gasket, turbine inlet	8-A-0271	1	✓

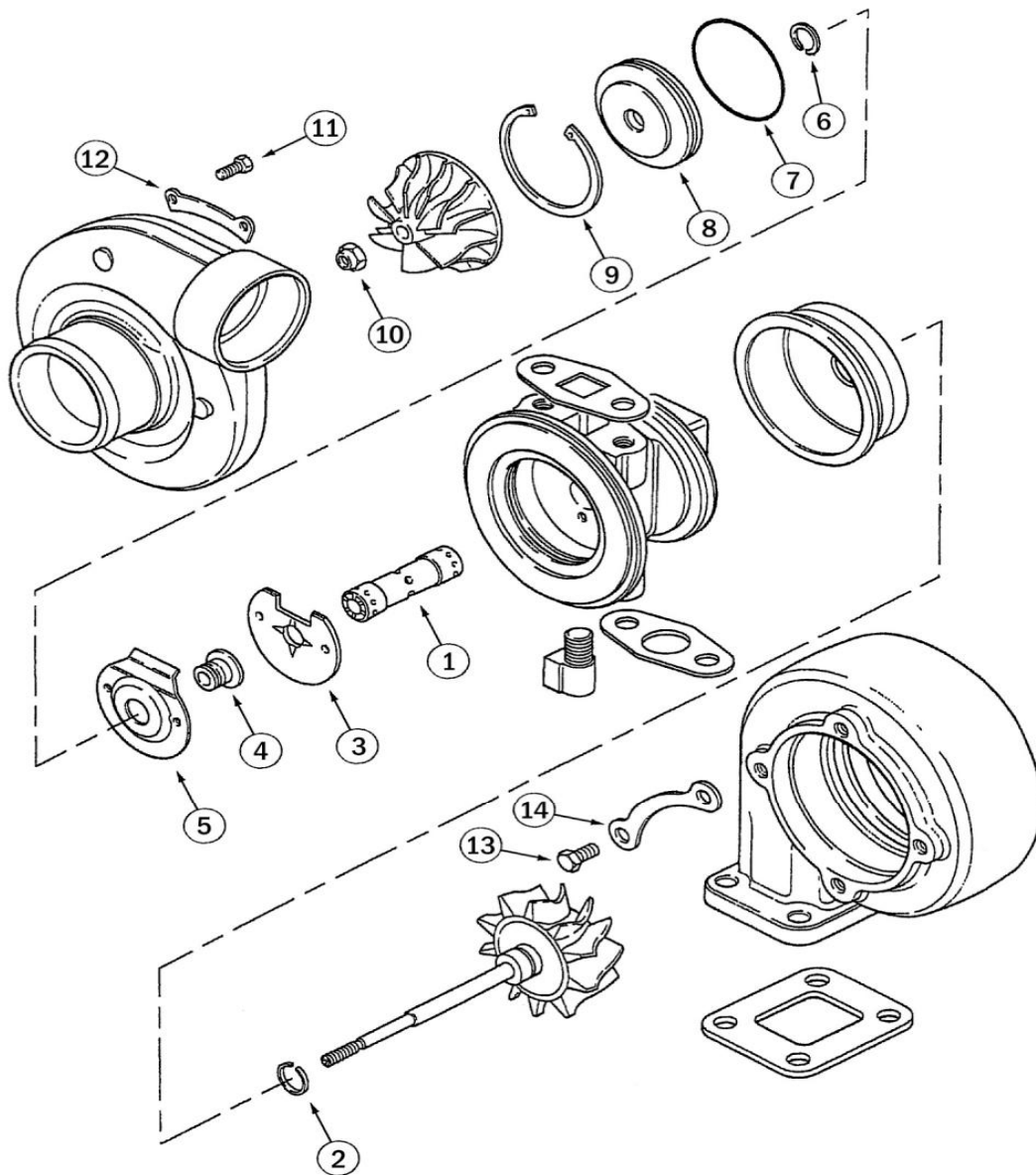
See JOURNAL BEARING section for oversize & under-size parts - page 57

See PISTON RING section for oversize parts - page 60

See GASKET section

3LM

S76



*This illustration is intended only as a guide. The actual part or assembly may vary from one model to another.*



## SERVICE KIT - Schwitzer

3LM

S76

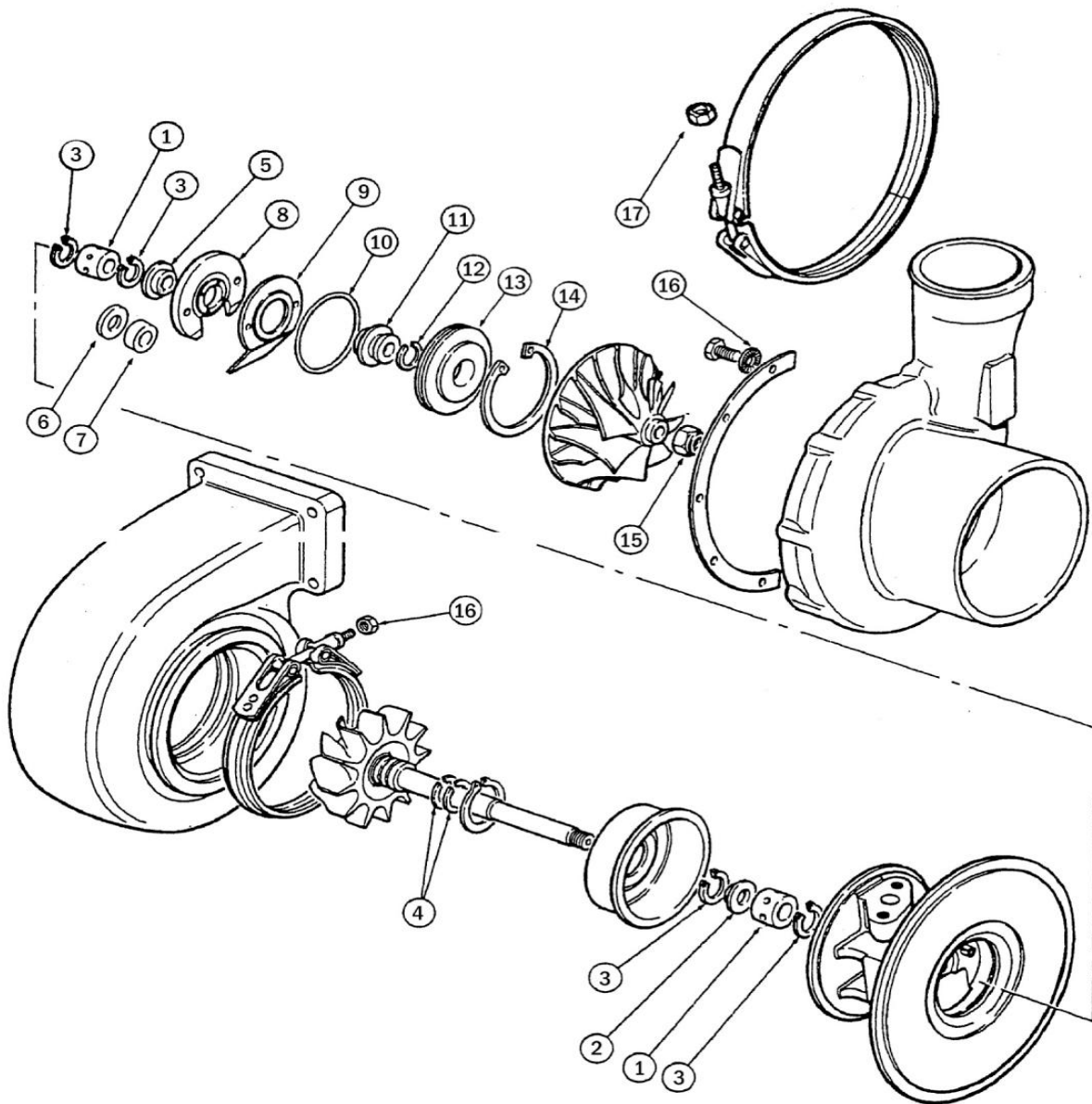
Item no.	Description	TI Part no.	Qty/ Turbo	TI Kit no.	
				7-C-0670	7-C-1864
1	Journal bearing	8-C-0068	1	✓	✓
2	Piston ring, t/end	8-B-0395	1	✓	✓
3	Thrust bearing	8-C-0067	1	✓	✓
4	Flinger sleeve	8-C-0066	1	✓	-
5	Oil deflector	-	1	-	-
6	Piston ring, c/end	8-C-1649	1	✓	✓
7	O ring, s/plate	8-B-0064	1	✓	✓
8	Insert	-	1	-	-
9	Retaining ring, insert	8-B-0077	1	-	-
10	Locknut, shaft	8-A-0164	1	✓	✓
11	Bolt, c/end	-	4	-	-
12	Clamp, t/end	-	8	-	-
13	Bolt, t/end	-	4	-	-
14	Clamp, t/end	-	2	-	-
	Gasket, backplate	8-C-0069	1	✓	✓
	Gasket, oil inlet	8-B-0062	1	✓	✓
	Gasket, oil outlet	8-A-0697	1	✓	✓
	Gasket, turbine inlet	8-A-0271	1	✓	✓

See JOURNAL BEARING section for oversize & under-size parts - page 59

See PISTON RING section for oversize parts - page 58

See GASKET section

## HT3B



*This illustration is intended only as a guide. The actual part or assembly may vary from one model to another.*



# SERVICE KIT - Schwitzer

HT3B

4LHR

Item no.	Description	TI Part no.	Qty/ Turbo	TI Kit no.	
				7-B-0645	7-B-0981
				<i>Note (i)</i>	<i>Note (ii)</i>
1	Journal bearing	8-B-0076	2	✓	✓
2	Oil control sleeve	8-B-0396	1	-	✓
3	Retaining ring, j/brg.	8-B-0517	4	✓	✓
4	Piston ring, t/end	8-B-0387	2	✓	✓
5	Thrust collar	8-B-0099	1	✓	-
6	Thrust ring	8-B-0052	1	-	✓
7	Thrust spacer	8-B-0982	1	-	✓
8	Thrust bearing	8-B-0087	1	✓	✓
9	Oil deflector	8-B-0979	1	-	✓
10	O ring, s/plate	8-B-0064	1	✓	✓
11	Oil slinger	8-B-0098	1	✓	✓
12	Piston ring, c/end	8-B-0527	1	✓	✓
13	Oil seal plate	8-B-0980	1	-	✓
14	Retaining ring, s/plate	8-B-0047	1	-	-
15	Locknut, shaft	8-B-0397	1	-	✓
16	Lockwasher, c/end	8-B-0096	10	-	-
16	Locknut, V band	8-B-0523	2	-	✓
	Gasket, oil inlet	8-A-0696	1	✓	✓
	Gasket, oil outlet	8-B-3119	1	✓	✓

*Note (i) HT3B*

*(ii) 4LHR*

See JOURNAL BEARING section for oversize & under-size parts - page 26

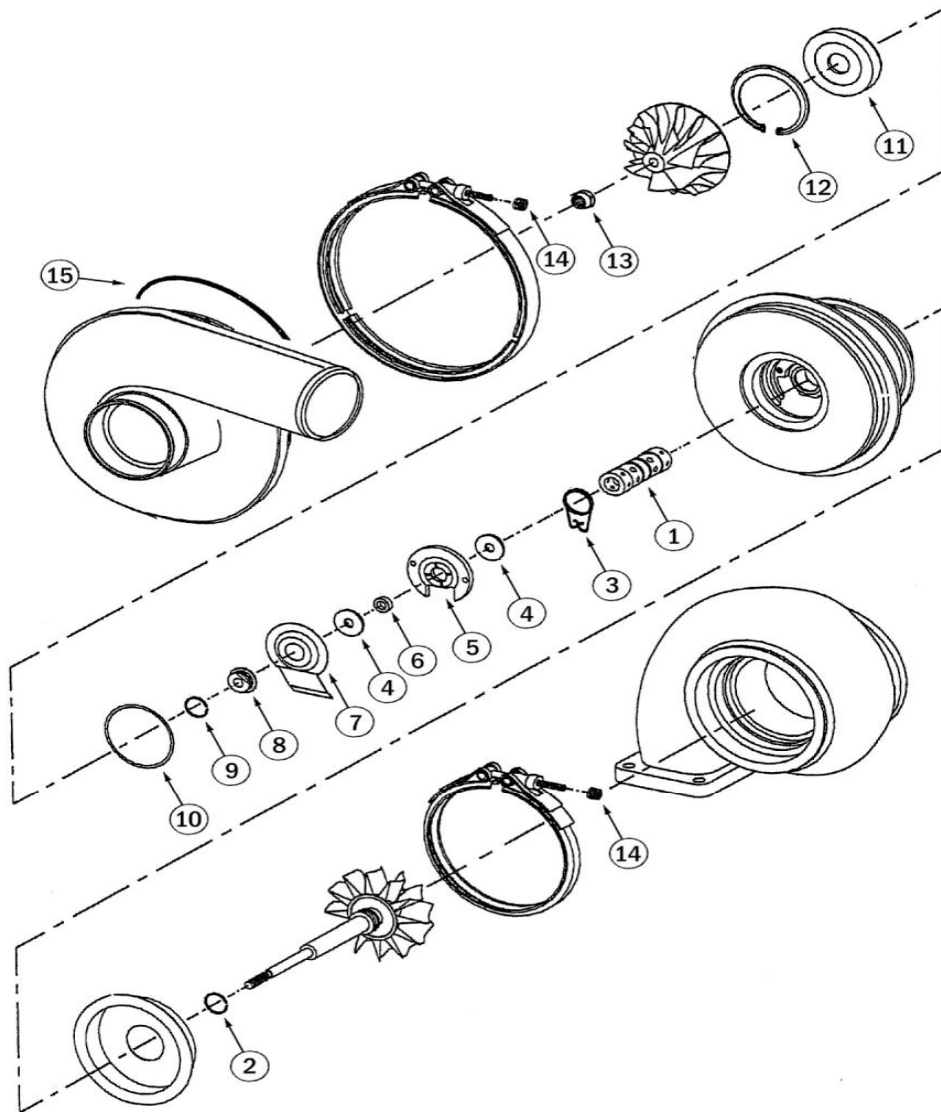
See PISTON RING section for oversize parts - page 32

See GASKET section

S3

S3A

S81



*This illustration is intended only as a guide. The actual part or assembly may vary from one model to another.*



## SERVICE KIT - Schwitzer

S3

S3A

S81

Item no.	Description	TI	Qty/ Turbo	TI Kit no.
		Part no.		7-C-3645
1	Journal bearing	8-C-2094	1	✓
2	Piston ring,t/end	8-C-1726	1	✓
2	Piston ring,t/end S81 only	8-B-0387	1	✓
3	Spring clamp	-	1	-
4	Thrust ring S3A only	8-C-1728	2	✓
5	Thrust bearing S3A only	8-C-1727	1	✓
6	Spacer sleeve	-	1	-
7	Oil deflector	-	1	-
8	Flinger	-	1	-
9	Piston ring, c/end	8-C-1649	1	✓
10	Seal ring, insert S3A ,S81	8-B-0064	1	✓
11	Insert			-
12	Retaining ring, insert	-	1	-
13	Locknut, l/h thread	8-A-0164	1	✓
14	Locknut, v band	-	-	-
15	O ring, brg.hsg/c.hsg.	-	1	-
	Gasket, oil inlet	8-C-3413	1	✓
	Gasket, oil outlet	8-C-1348	1	✓
	Gasket, oil outlet	8-B-0063	1	✓
	Gasket, oil outlet	8-C-3412	1	✓
	Gasket, t/inlet	8-C-3417	1	✓

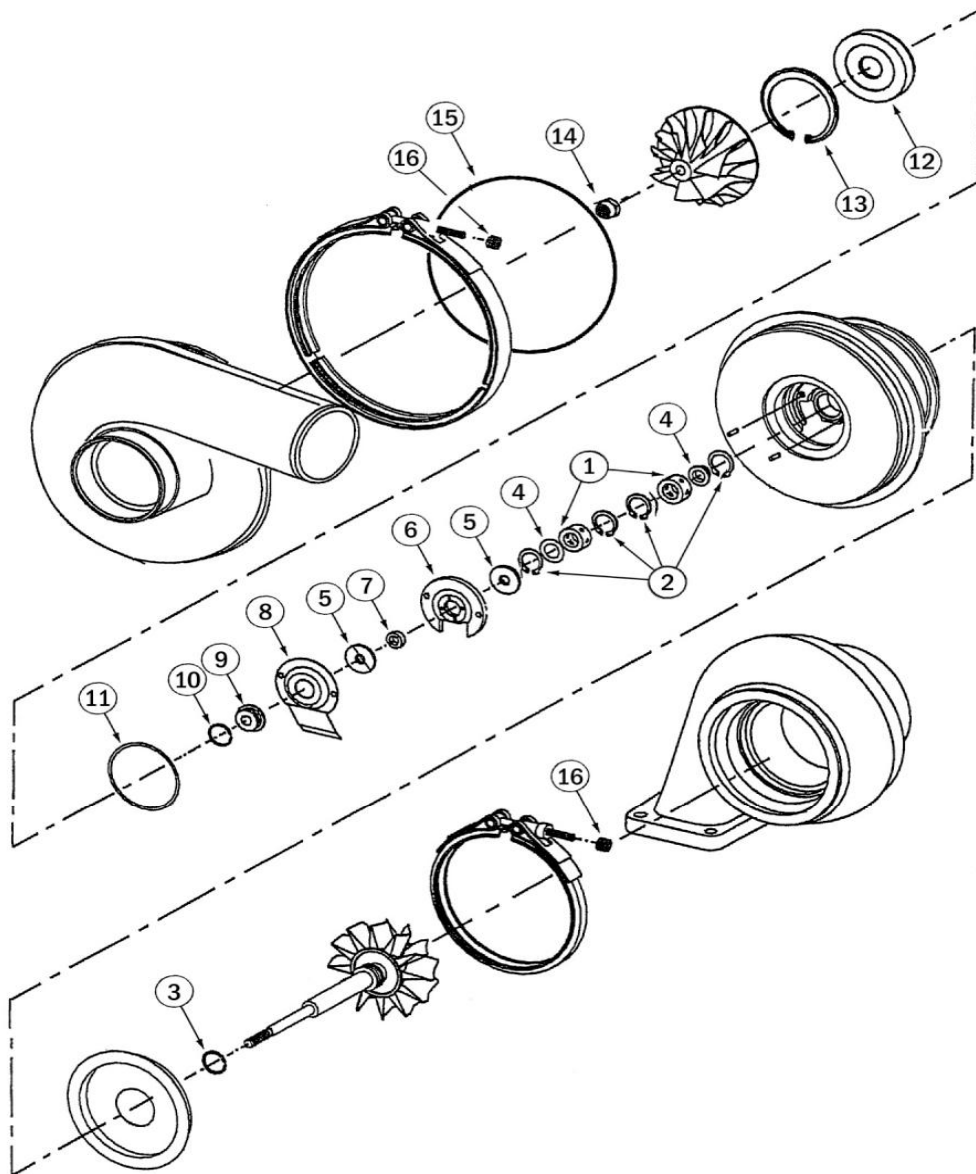
See JOURNAL BEARING section for oversize & under-size parts - page 60

See PISTON RING section for oversize parts - page 62

See GASKET section



## S3B



*This illustration is intended only as a guide. The actual part or assembly may vary from one model to another.*



## SERVICE KIT - Schwitzer

### S3B

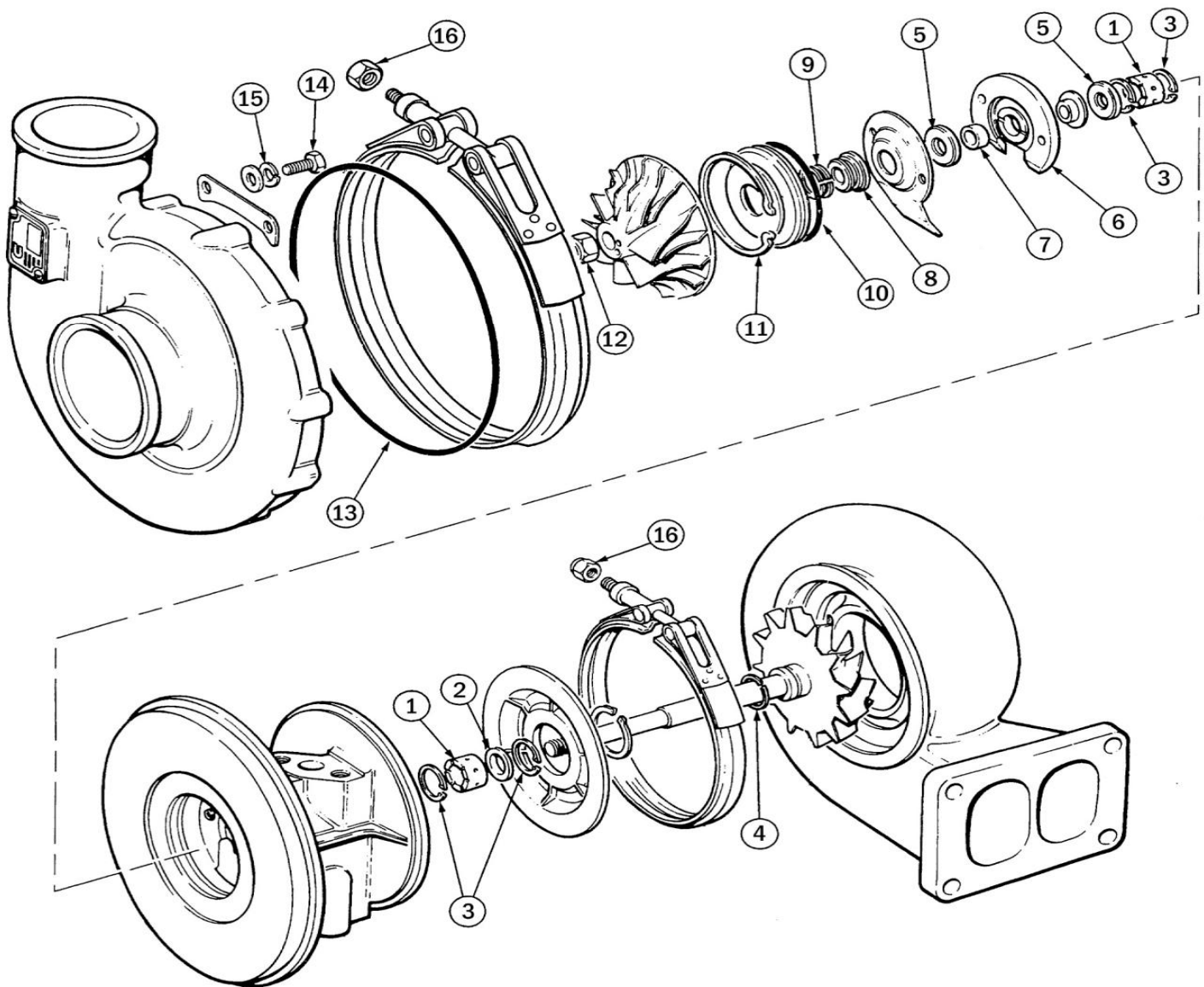
Item no.	Description	TI Part no.	Qty/ Turbo	TI Kit no.	
				7-C-1733	7-C-3513
1	Journal bearing	8-C-1216	2	✓	✓
2	Retaining ring, jnl/brg.	8-C-1729	4	✓	✓
3	Piston ring, t/end	8-C-1726	1	✓	✓
4	Speed control washer	8-C-1731	2	✓	✓
5	Thrust washer	8-C-1728	2	✓	✓
6	Thrust bearing	8-C-3770	1	✓	✓
7	Spacer sleeve	-	1	-	
8	Oil deflector	-	1	-	
9	Flinger	-	1	-	
10	Piston ring, c/end	8-C-1649	1	✓	✓
11	Seal ring, brg/hsg	8-B-0064	1	✓	✓
12	Insert	-			
13	Retaining ring, insert	8-B-0077	1	-	
14	Locknut, l/h thread	8-A-0164	1	✓	✓
14	Locknut, l/h thread	8-C-2986	1	✓	✓
15	O ring, brg.hsg/c.hsg	8-C-2985	1	✓	-
16	Locknut, V band	8-D-3503	2	✓	✓

See JOURNAL BEARING section for oversize & under-size parts - page 61

See PISTON RING section for oversize parts - page 62

See GASKET section

## 4LE



*This illustration is intended only as a guide. The actual part or assembly may vary from one model to another.*



## SERVICE KIT - Schwitzer

4LE

4LF

4LG

4LGK

4LGZ

Item no.	Description	TI Part no.	Qty/ Turbo	TI Part no.			
				7-B-0642	7-C-1830	7-C-0787	7-C-0815
				Note (i)	Note (ii)	Note (iii)	Note (iv)
1	Journal bearing	8-B-0076	1	✓	✓	✓	✓
2	Oil control sleeve	8-B-0396	1	✓	✓	✓	✓
3	Retaining ring, j/brg.	8-B-0517	4	✓	✓	✓	✓
4	Piston ring, t/end, step bor	8-B-0387	1	✓	✓	✓	✓
4	Piston ring, t/end, smooth bo	8-B-0391	2	-	✓	✓	✓
10	Piston ring, t/end	8-B-0527	1/2	-	✓	-	-
10	Piston ring, t/end	8-B-0387	1	-	-	✓	✓
5	Thrust ring	8-B-0052	1	✓	✓	✓	-
6	Thrust bearing	8-B-0088	1	-	✓	✓	✓
7	Thrust spacer	8-B-0982	1	-	-	-	-
8	Oil slinger	8-B-1584	1	✓	-	-	-
9	Piston ring, c/end	8-B-0391	2	-	-	-	-
10	O ring, s/plate	8-B-0064	1	✓	✓	✓	✓
11	Retaining ring, s/plate	8-B-0077	1	✓	-	-	-
11	Retaining ring, s/plate	8-B-0047	1	-	-	✓	-
12	Locknut, shaft	8-B-0397	1	✓	✓	✓	-
12	Locknut, shaft	8-B-2867	1	-	-	-	-
13	O ring, c/hsg	8-B-0390	1	-	✓	✓	-
14	Bolt, c/end	8-A-0169	10	-	-	-	-
15	Lockwasher, c/end	8-B-0096	10	-	-	-	-
15	Lockwasher, c/end	8-B-0521	10	✓	-	-	-
16	Locknut, V band	8-B-0523	2	✓	-	✓	✓
	Lockplate, t/end	8-B-0418	4	✓	-	-	-
	Bolt, t/end	8-A-0172	10	-	-	-	-
	Gasket, oil inlet	8-C-3415	1	-	-	✓	✓
	Gasket, oil outlet	8-A-0697	1	-	-	✓	✓
	Gasket, turbine inlet	8-C-3419	1	-	-	✓	✓

Note (i) 4LGK

(ii) 4L, 4LE, 4LF, 4LG, 4LGK, 4LGZ

(iii) 4LE, 4LY & 4MF

(iv) 4LE & 4LF

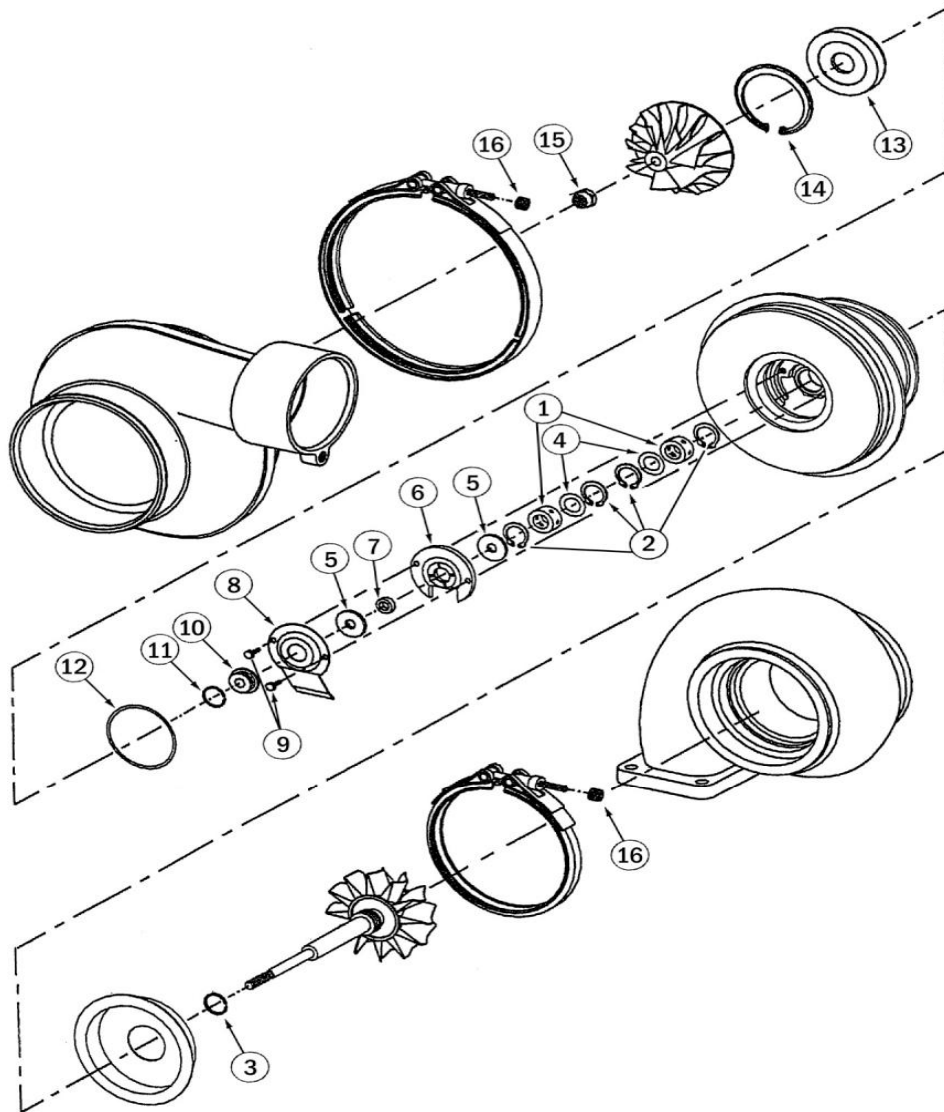
See JOURNAL BEARING section for oversize & under-size parts - page 63

See PISTON RING section for oversize parts - page 64

See GASKET section

S4

S4D



*This illustration is intended only as a guide. The actual part or assembly may vary from one model to another.*



## SERVICE KIT - Schwitzer

S4

S4D

Item no.	Description	TI Part no.	Qty/ Turbo	TI Kit no.
				7-C-3515

S4D ONLY

1	Journal bearing	8-C-1217	2	✓
2	Retaining ring	8-A-0137	4	✓
3	Piston ring, t/end	8-C-1726	2	✓
4	Speed control washer	8-C-1230	2	✓
5	Thrust ring S4D only	8-B-0052	2	✓
5	Thrust ring S4 only	8-C-1367	2	-
6	Thrust bearing S4D only	8-B-0088	1	✓
7	Spacer sleeve S4D only	8-B-0982	1	✓
7	Spacer sleeve S4 only	8-C-1366	1	-
8	Oil deflector	-	1	-
9	Screw, oil deflector	-	2	-
10	Flinger sleeve	-	1	-
11	Piston ring, c/end	8-C-1351	2	✓
12	O ring, s/plate S4D only	8-B-0064	1	✓
13	Insert	-	1	-
14	Retaining ring, insert	8-B-0077	1	✓
15	Locknut, shaft S4D only	8-B-0397	1	✓
16	Locknut, V band	-	2	-

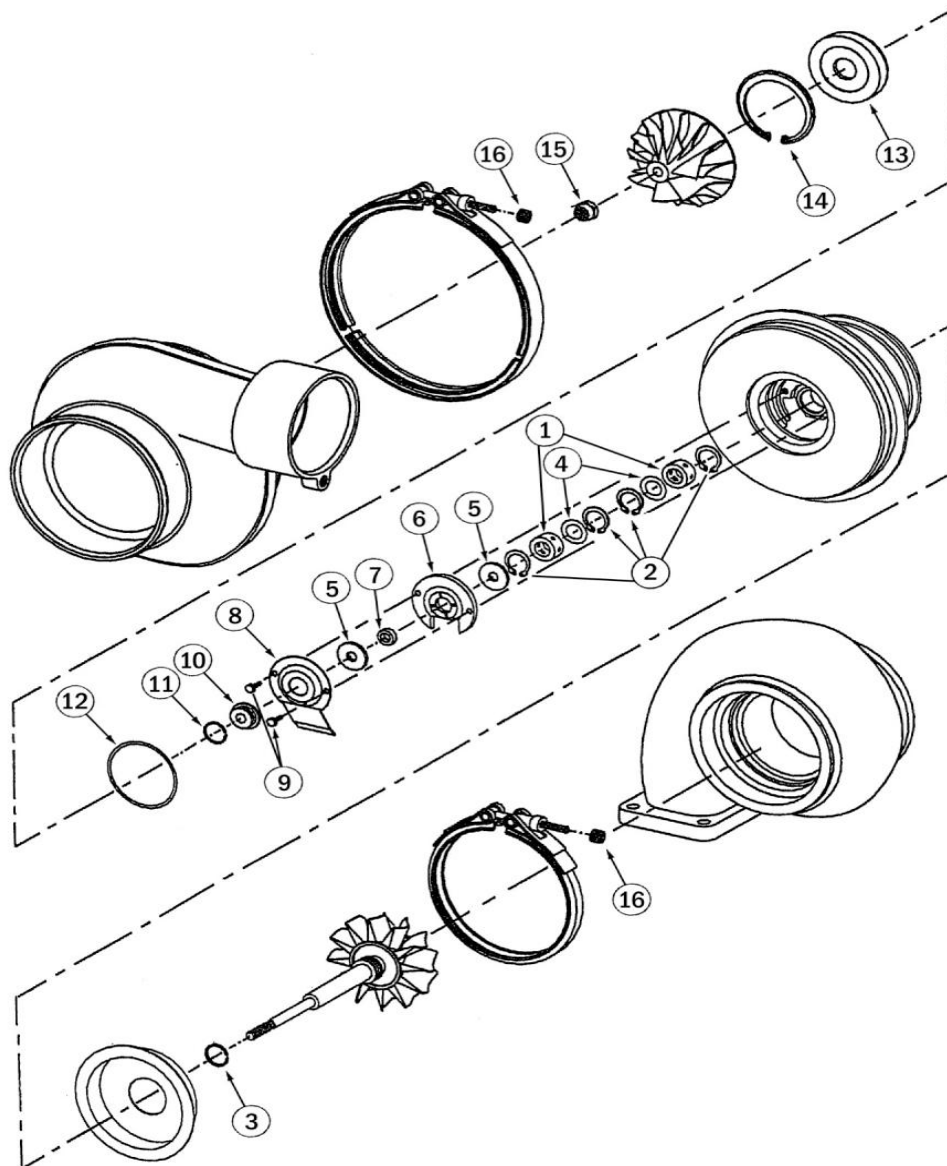
See JOURNAL BEARING section for oversize & under-size parts - page 64

See PISTON RING section for oversize parts - page 65

See GASKET section

S4T

S500



*This illustration is intended only as a guide. The actual part or assembly may vary from one model to another.*





## SERVICE KIT - Schwitzer

S4T

S500

Item no.	Description	TI Part no.	Qty/ Turbo	TI Kit no.
				n/a
1	Journal bearing	8-B-0045	2	✓
2	Retaining ring, jnl. brg.	-	4	-
3	Piston ring, t/end S4T only	8-C-1726	2	✓
4	Washer, speed control	-	2	-
5	Thrust ring S4T only	8-B-0052	1	-
6	Thrust bearing		1	✓
7	Spacer sleeve S500	-	1	-
7	Flinger sleeve S4T only	8-C-1584	1	✓
8	Oil deflector	-	1	-
10	Spacer	-	1	-
11	Piston ring, c/end S4T only	8-C-1351	2	✓
12	O ring, s/plate	8-B-0064	1	✓
14	Retaining ring, insert S500	8-B-0077	1	-
15	Locknut, shaft S4T only	8-B-0397	1	✓
16	Locknut, V band S4T only	8-B-0523	2	-

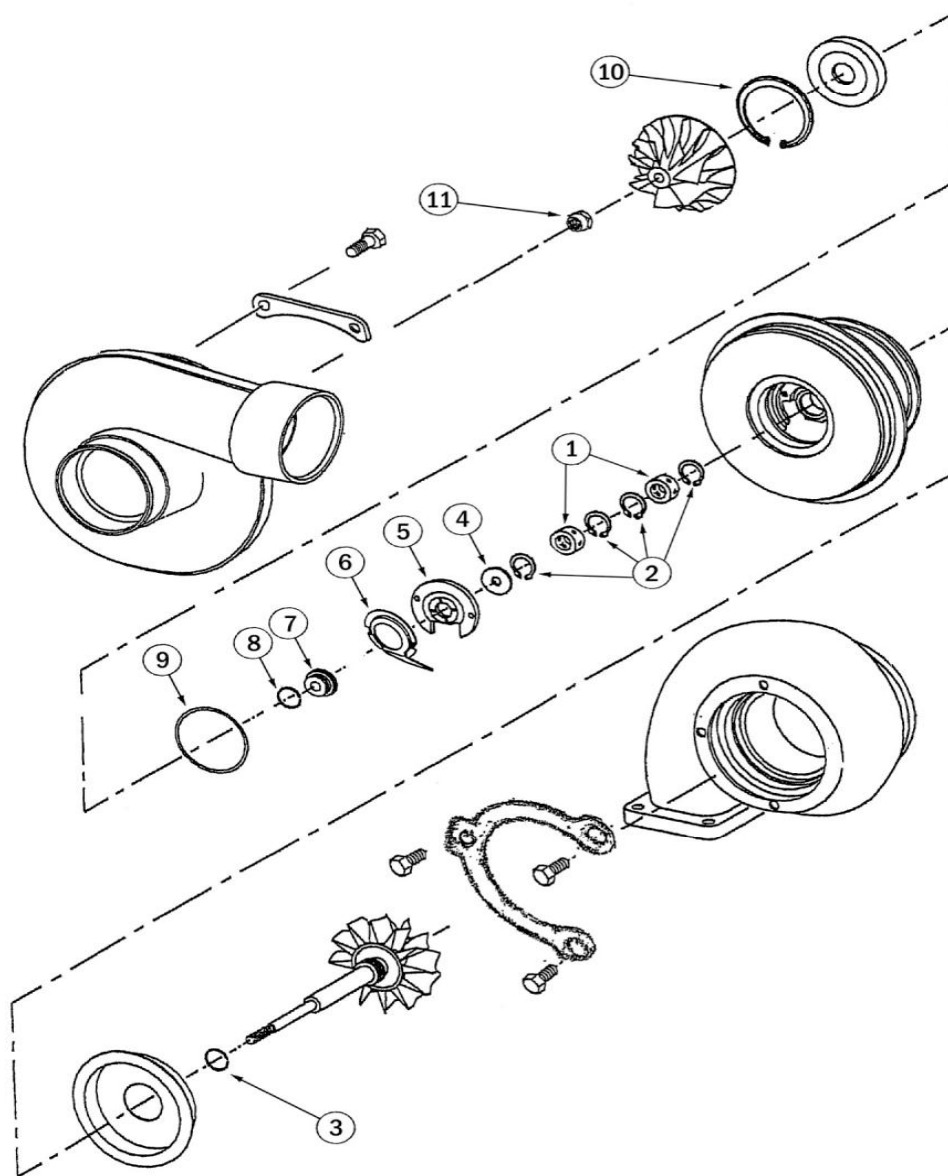
See JOURNAL BEARING section for oversize & under-size parts - page 62

See PISTON RING section for oversize parts - page 65

See GASKET section



S200



*This illustration is intended only as a guide. The actual part or assembly may vary from one model to another.*



## SERVICE KIT - Schwitzer

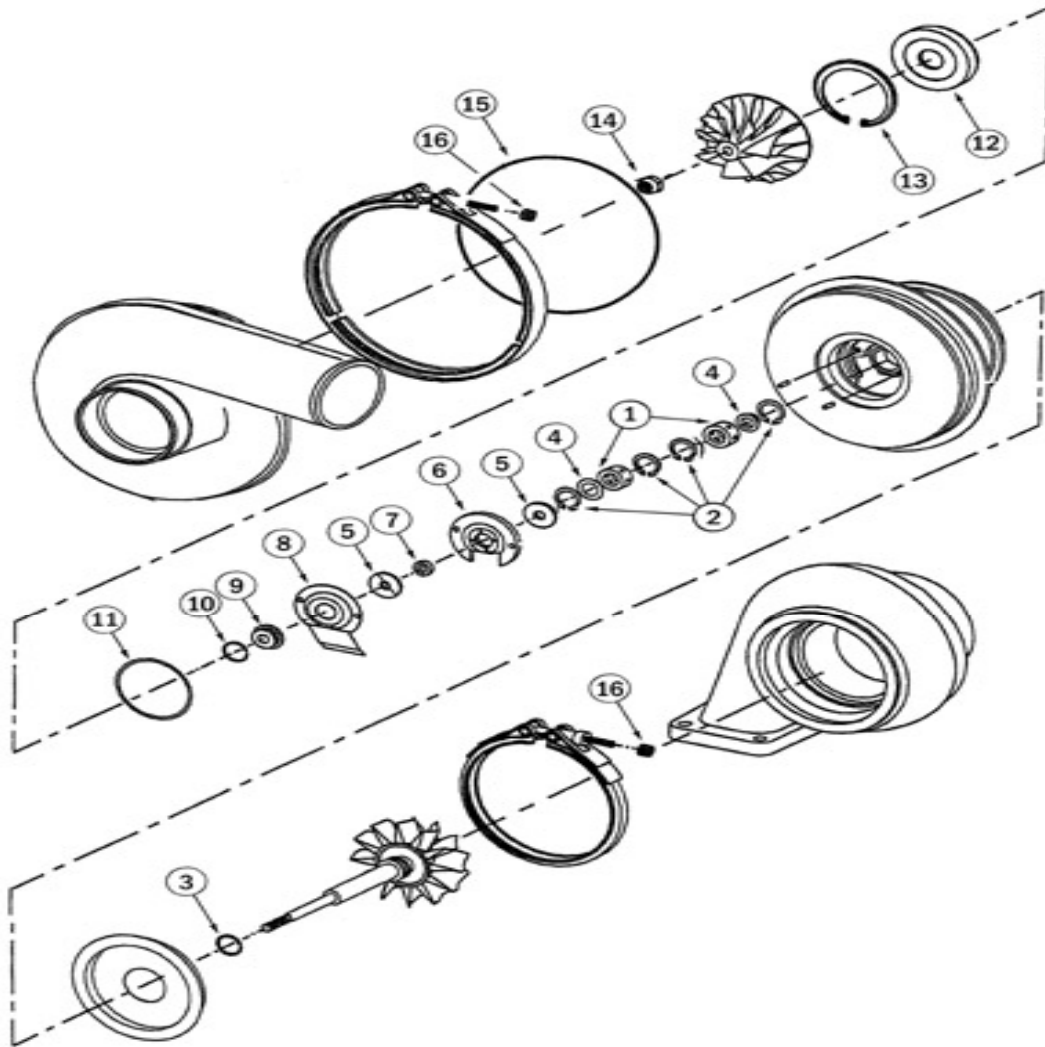
S200

Item no.	Description	TI	Qty/ Turbo	TI Kit no.
		Part no.		7-C-3478
1	Journal bearing	8-C-3479	2	✓
2	Retaining ring, jnl/brg.	8-C-1379	4	✓
3	Piston ring,t/end	8-C-2992	1	✓
4	Thrust sleeve	8-C-3480	1	✓
5	Thrust bearing	8-C-3481	1	✓
6	Oil deflector	-	1	-
7	Flinger sleeve	-	1	-
8	Piston ring, c/end	8-C-2990	1	✓
9	O Ring, insert	8-C-1246	1	✓
10	Retaining ring, insert	-	1	-
11	Locknut, shaft, l/h	8-C-3482	1	✓
12	O Ring, c/hsg, 120 mm	8-C-3483	1	✓
13	Bolt, c/end, hex.	8-C-3485	4	✓
3	Capscrew & lockwasher	7-C-3484	6	✓

See JOURNAL BEARING section for oversize & under-size parts - page 65

See PISTON RING section for oversize parts - page 67

See GASKET section



*This illustration is intended only as a guide. The actual part or assembly may vary from one model to another.*



## SERVICE KIT - Schwitzer

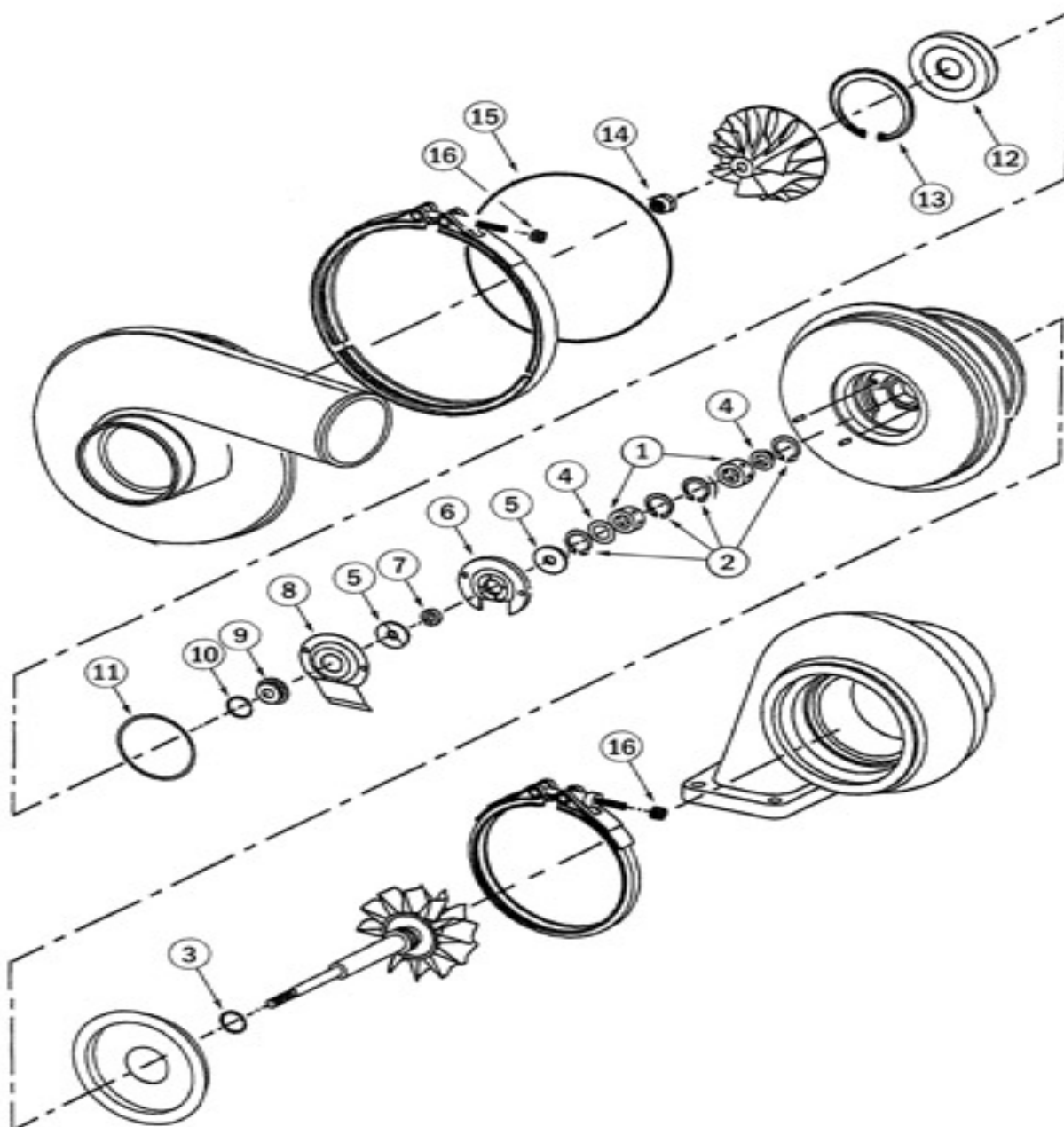
S300

Item no.	Description	TI	Qty/ Turbo	TI Kit no.
		Part no.		7-C-3486
1	Journal bearing	8-C-3385	2	✓
2	Retaining ring, jnl/brg.	8-C-3487	4	✓
3	Piston ring,t/end	8-C-2993	1	✓
4	Not used	-		
5	Not used	-		
6	Thrust bearing	8-C-3489	1	✓
7	Thrust sleeve	8-C-3488	1	✓
8	Oil deflector	-	1	-
9	Flinger sleeve	-	1	-
10	Piston ring,t/end	8-C-3477	1	✓
11	Not used			
12	Insert	-	1	
13	Retaining ring, insert	-	1	
14	Locknut, shaft, l/h	8-C-3490	1	✓
15	O ring, c/hsg, 142 mm	8-C-3492	1	✓
15	O ring, c/hsg, 165 mm	8-C-3493	1	✓
16	Not used			
	Bolt, c/end, hex.	8-C-3485	6	✓
	Capscrew & lockwasher	7-C-3491	8	✓

See JOURNAL BEARING section for oversize & under-size parts - page 66

See PISTON RING section for oversize parts - page 68

See GASKET section



*This illustration is intended only as a guide. The actual part or assembly may vary from one model to another.*



## SERVICE KIT - Schwitzer

S400

S410

Item no.	Description	TI	Qty/ Turbo	TI Kit no.
		Part no.		7-C-3494
1	Journal bearing	8-C-3496	2	✓
2	Retaining ring, jnl/brg.	8-C-3495	4	✓
3	Piston ring, t/e, S400 only	8-C-3504	2	✓
3	Piston ring, t/e	8-C-3497	1	✓
4	Not used	-		
5	Not used	-		
6	Thrust bearing	8-C-3499	1	✓
7	Thrust sleeve	8-C-3498	1	✓
8	Oil deflector	-	1	-
9	Flinger sleeve	-	1	-
10	Piston ring, c/end	8-C-3500	1	✓
11	O Ring, insert	8-C-3501	1	✓
12	Insert	-	1	
13	Retaining ring, insert	-	1	
14	Locknut, shaft, l/h	8-C-3502	1	✓
15	O ring, c/hsg.			-

See JOURNAL BEARING section for oversize & under-size parts - page 67

See PISTON RING section for oversize parts - page 69

See GASKET section