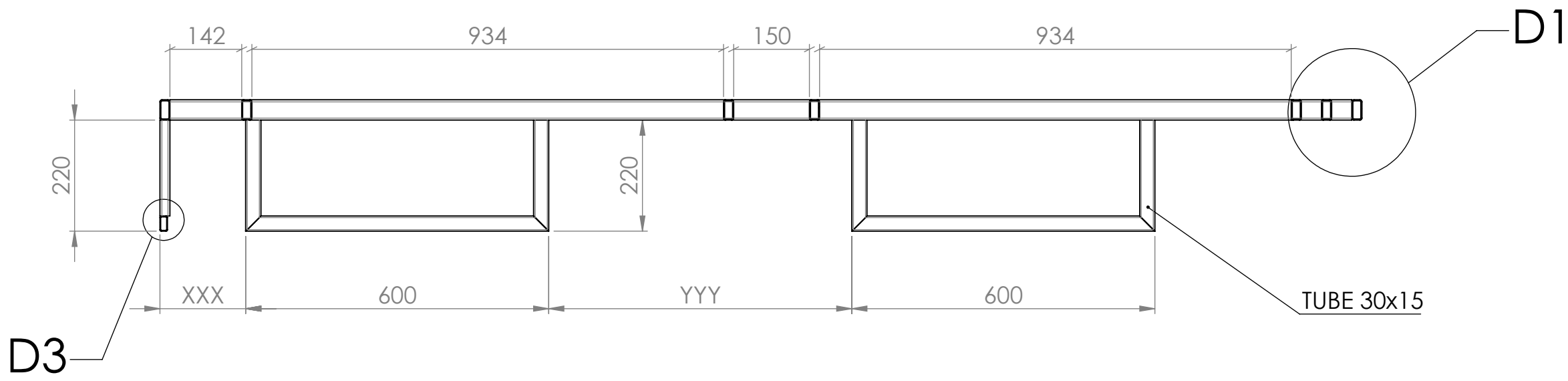
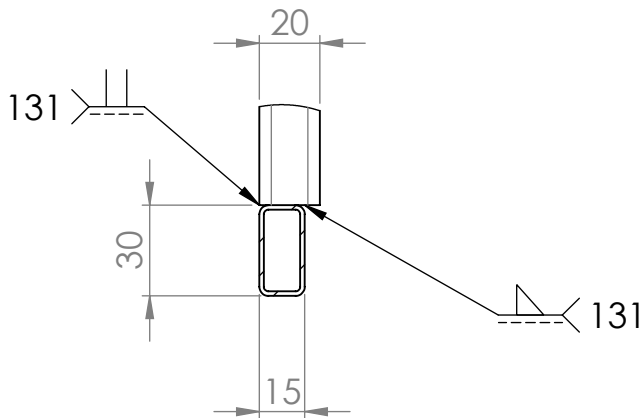


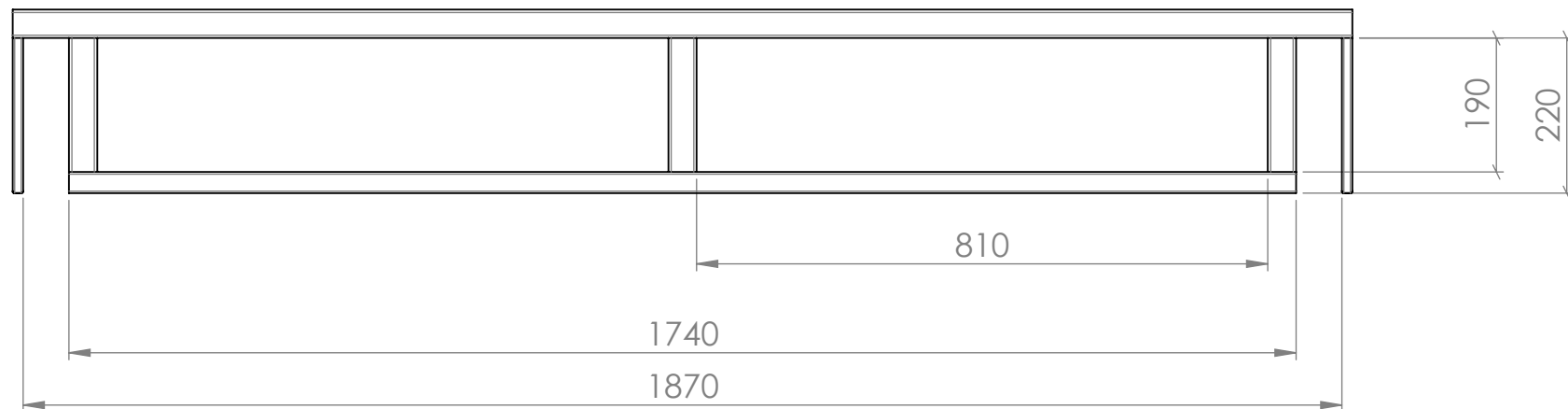
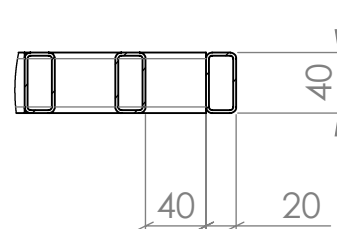
A-A



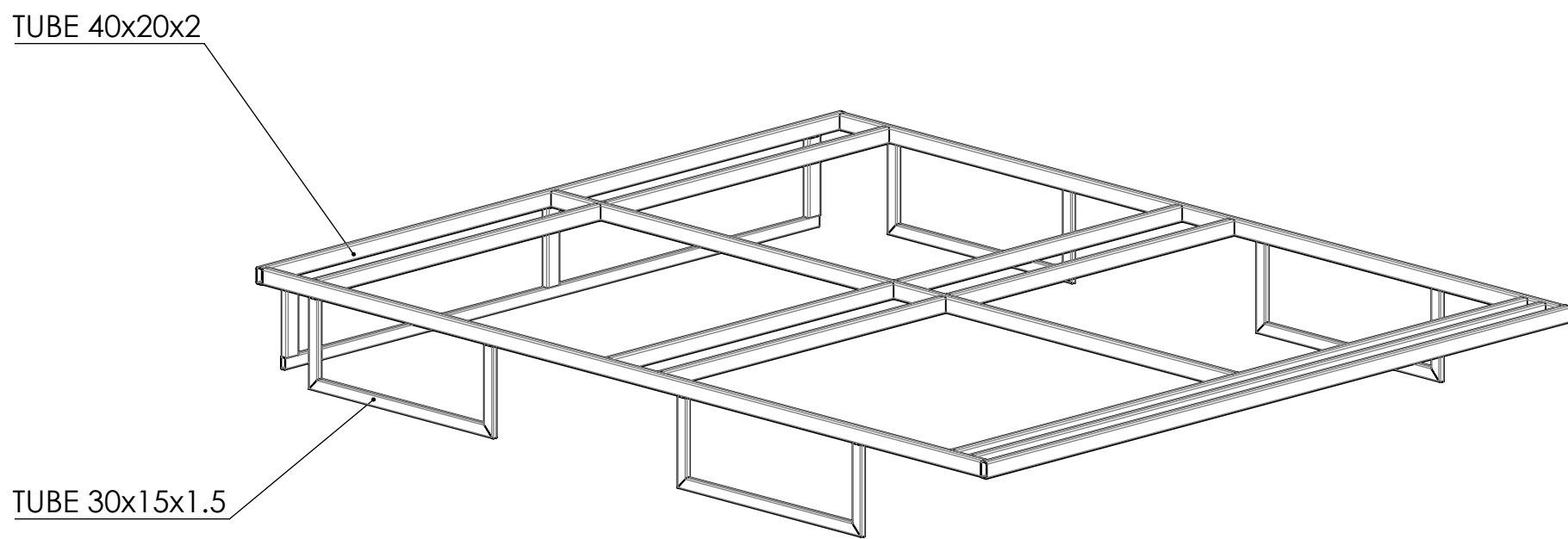
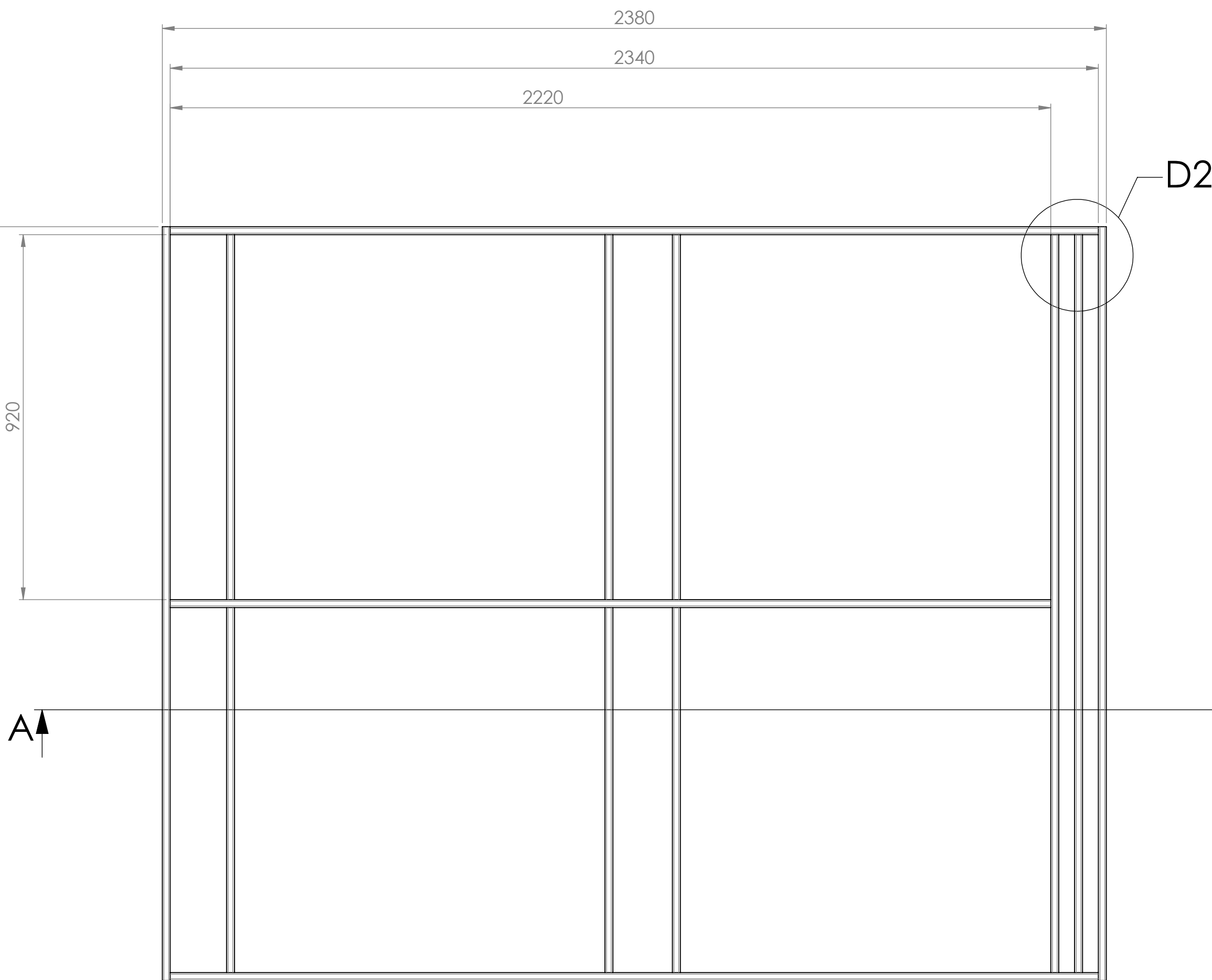
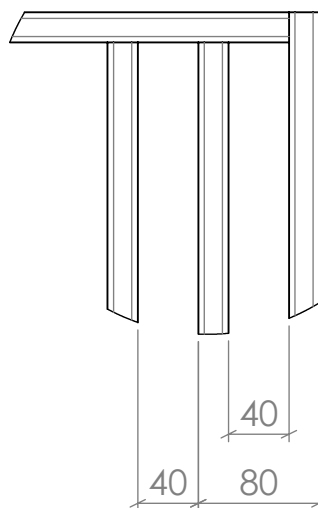
DETAIL D3
SCALE 2 : 5



DETAIL D1
SCALE 1 : 5




DETAIL D2
SCALE 1 : 5



NOTA

- LES POSITIONS XXX et YYY SONT A DEFINIR ET A SOUDER SUR LE CAMION
- SOUDURES ETANCHES α=7 SAUF INDICATION

A	20/12/19	FFN			
Rev	Date	Drawer	Checker	Tech. approval	Modifications
REVISIONS					
General tolerances:		Roughness:	Material:	Treatment:	
Linear:	ISO 2768-mK	Mass: 39.49 Kg	S235 (E24)		PEINTURE EPOXY NOIRE
Angular:	x		Observations:		
Scale:	RENAULT MIDLINER S160 EQUIPEMENTS			FFN off road	
1:10	GALERIE DOUBLE CABINE				
					
Format:	Drawing number		This drawing is property of the company and cannot reproduced or communicated without authorisation.		
A1	202-10-01-003		Page: 1/1 Rev: A		