



MICHELIN

Date : February 10 1997

Ref. AA110081

CARACTERISTIQUES TECHNIQUES

TECHNICAL CHARACTERISTICS

365/80 R 20 XZL TL 152 K MPT

PLE/T - PLE/M - Département Poids Lourd - *Truck Tire Department*

PROPRIETE MICHELIN - MICHELIN PROPERTY

Reproduction ou communication interdites sans accord préalable
Reproduction or communication prohibited without prior approval

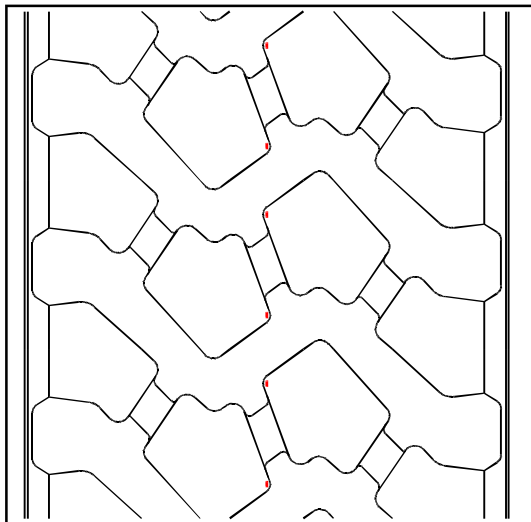


MICHELIN

Date : February 10 1997

Ref. SA 110081

365/80 R 20 XZL TL 152 K MPT



Charge en simple	152	3550	kg
Charge en jumelé			kg
Vitesse	K	110	km/h
Pression (en simple)		6.0	bar
Pression (en jumelé)			bar

Point singulier :

Charge en simple	kg
Charge en jumelé	kg
Vitesse	km/h
Pression (simple et jumelé)	bar

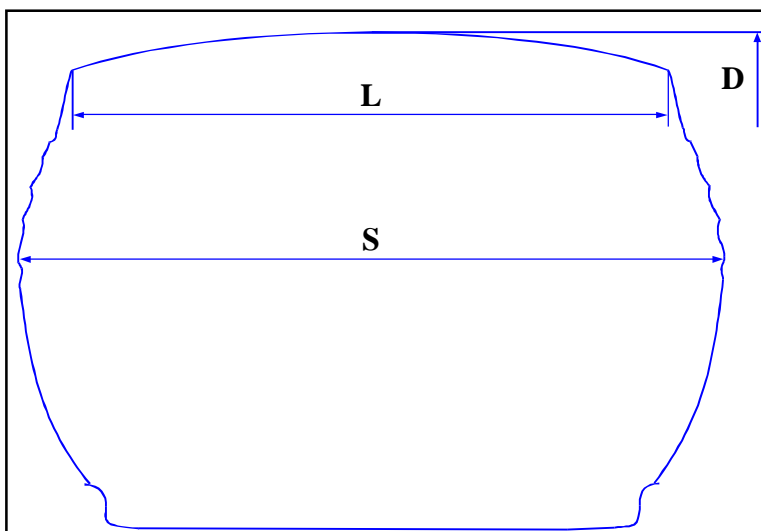
UTILISATION : Segment L

POSITION : Toutes positions

CARACTERISTIQUES TECHNIQUES

Poids	70.1	kg	Section libre (S)	372	mm
Capacité interne	186.0	l	Section écrasée *	410	mm
Largeur sommet (L)	313	mm	Diamètre libre (D)	1096	mm
Profondeur de sculpture	19.9	mm	Rayon écrasé *	501	mm
Profondeur de recreusage	4.0	mm	Flèche*	46.5	mm
Circonférence de roulement*	3330	mm			

* aux conditions nominales



JANTE : 11-20

CHAMBRE:

FLAP:

Jante : 11DC (montage TL avec joint Jt 1443)

Jante : 11SDC (montage TT)

Jante	Chambre	Flap
11SDC	20Q	320-20L

PROPRIETE MICHELIN - MICHELIN PROPERTY

Reproduction ou communication interdites sans accord préalable

Reproduction or communication prohibited without prior approval

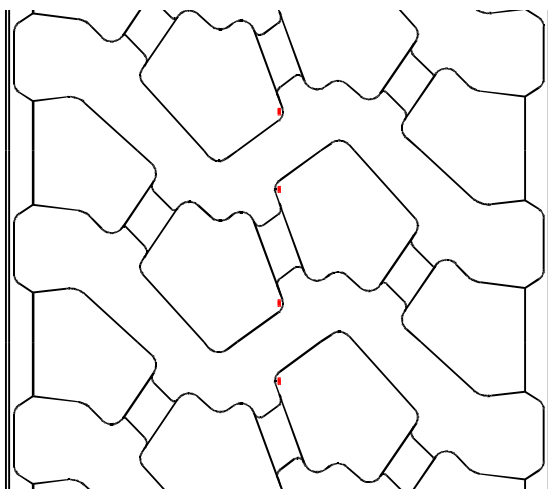


MICHELIN

Date : February 10 1997

Ref. RJ 110081

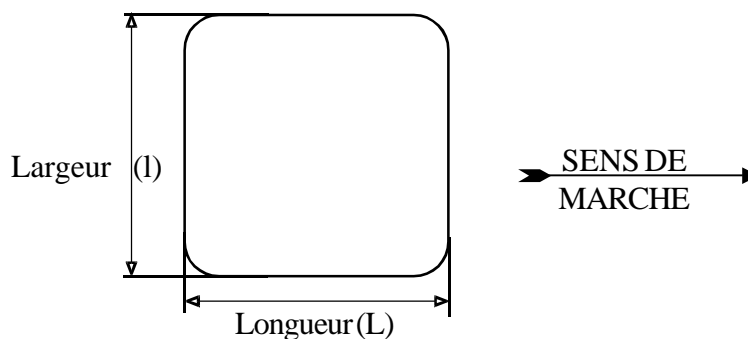
365/80 R 20 XZL TL 152 K MPT



Profondeur de sculpture - 19,9 mm

SURFACE DE CONTACT			
	Surface Cm ²	L mm	l mm
Totale *	777	292	308
Réelle *	395	292	308

* aux conditions nominales route



PROPRIETE MICHELIN - MICHELIN PROPERTY

Reproduction ou communication interdites sans accord préalable

Reproduction or communication prohibited without prior approval



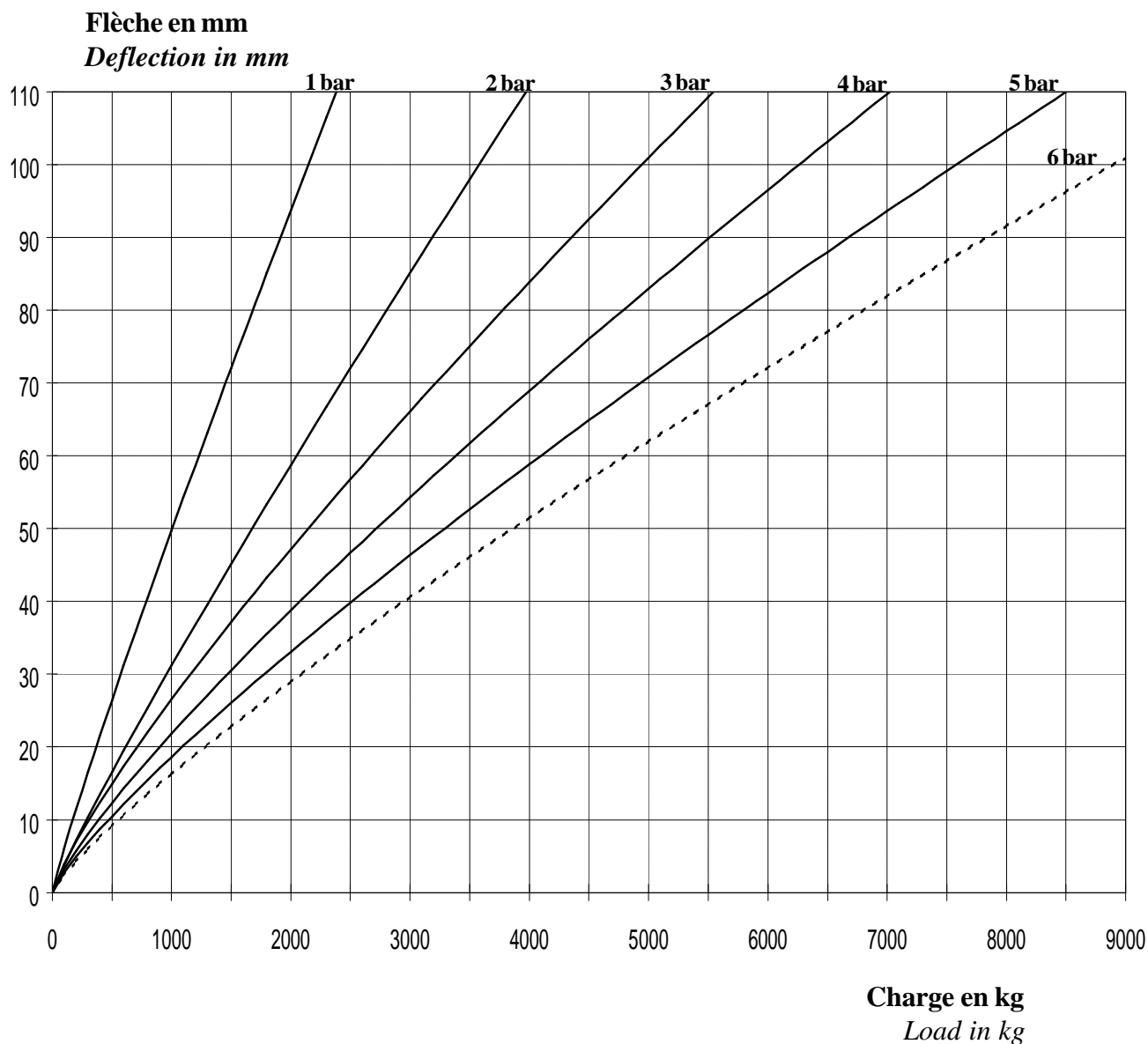
MICHELIN

Date : February 10 1997

Ref. AC110081

RIGIDITE RADIALE - RADIAL DEFLECTION VERSUS RADIAL FORCE *

365/80 R 20 XZL TL 152 K MPT



Jante de mesure-Measuring rim 11 - 20

*AUX CONDITIONS D'ESSAI MICHELIN - UNDER MICHELIN TEST CONDITIONS

PROPRIETE MICHELIN - MICHELIN PROPERTY

Reproduction ou communication interdites sans accord préalable
Reproduction or communication prohibited without prior approval



MICHELIN

Date : February 10 1997

Ref. BR110081

CARACTERISTIQUES TECHNIQUES-TECHNICAL CHARACTERISTICS

365/80 R 20 XZL TL 152 K MPT

CAI	110081
Type	TUBELESS
Load range	L
Ply rating	
Indice de charge simple - Load index in single	152
Indice de charge en jumelé - Load index in dual	
Code de vitesse - Speed symbol	K
Point singulier - Unique point	
N° homologation - Homologation N°	E2 0093792
Jante de mesure - Measuring rim	11 - 20
Jante(s) permise(s) - Permitted rim(s)	
Chambre - Tube	20Q
Joint - Seal	Jt TYRAN 1443
Flap - Flap	320-20L

CONDITIONS NOMINALES - NOMINAL CONDITIONS :

	Charge Kg	Vitesse Km/h	Pression bar
Utilisation route - Road use	3550	110	6.0
Utilisation piste - Track use	3550	65	4.7
Utilisation sable/boue - Sand/mud use	3550	20	2.4
Utilisation en jumelé - Dual fitment use			
Point singulier (en simple) - Unique point (single)			
Point singulier (en jumelé) - Unique point (dual)			

CARACTERISTIQUES PRINCIPALES - PRINCIPAL CHARACTERISTICS :

Diamètre - Diameter	1096 mm
Rayon libre - Free radius	548 mm
Rayon écrasé - Static laden radius*	501 mm
Section libre - Free section width	372 mm
Section écrasée - Laden section width*	410 mm
Révolutions/mile - Revolutions/mile*	483
Circonférence de roulement - Rolling circumference*	3330 mm
Largeur sommet - Tread width	313 mm
Flèche sommet - Tread droop	22.5 mm
Profondeur sculpture - Tread depth	19.9 mm
Profondeur de recreusage - Regroovable depth	4.0 mm
Poids nominal - Nominal tire weight	70.1 kg
Volume intérieur - Internal volume	186 l
Moment d'inertie - Mass moment of inertia	14.4 Kg.m ²
Epaisseur bourrelet - Bead thickness	28.0 mm

EMPREINTE AU SOL - GROUND CONTACT AREA*

Longueur - Length	292 mm	Surface totale - Total area	777 cm ²
Largeur - Width	308 mm	Surface réelle - Net area	395 cm ²

*AUX CONDITIONS NOMINALES ROUTE - FOR NOMINAL ROAD CONDITIONS

PROPRIETE MICHELIN - MICHELIN PROPERTY**Reproduction ou communication interdites sans accord préalable
Reproduction or communication prohibited without prior approval**



MICHELIN

Date : February 10 1997

Ref. AB110081

365/80 R 20 XZL TL 152 K MPT

Charges et pressions d'utilisation **en monte simple**
Loads and inflation pressures chart in single fitment

Pressions d'utilisation route - *Tire inflation pressures for road service (bar)*

Charge par enveloppe <i>Load per tire</i> (Kg)		Vitesse - <i>Speed</i> (Km/h)												
		130	120	110	100	90	80	65	50	40	30	20	10	0
Exceptionnel route	8880													8.4
	6390												7.8	5.8
	5330											7.3	6.4	4.7
	4440									6.8	5.9	5.2	3.8	
	4080									6.6	6.2	5.4	4.7	3.5
	3980								6.6	6.4	6.0	5.2	4.6	3.4
	Special road							6.4	6.3	6.2	5.8	5.0	4.4	3.2
	conditions						6.2	6.1	6.0	5.9	5.5	4.8	4.2	3.1
	3620					6.1	6.0	6.0	5.9	5.8	5.4	4.7	4.1	3.0
Nominal route	3550			6.0	6.0	5.9	5.9	5.9	5.8	5.6	5.2	4.6	4.0	2.9
	3500			5.9	5.9	5.8	5.8	5.8	5.7	5.6	5.2	4.5	3.9	2.9
	3400			5.7	5.7	5.6	5.6	5.6	5.5	5.4	5.0	4.4	3.8	2.8
	3300			5.5	5.5	5.5	5.4	5.4	5.3	5.2	4.8	4.2	3.7	2.7
	3200			5.3	5.3	5.3	5.2	5.2	5.1	5.0	4.7	4.1	3.5	2.5
	3100			5.1	5.1	5.1	5.1	5.0	4.9	4.8	4.5	3.9	3.4	2.4
	3000			5.0	5.0	4.9	4.9	4.8	4.8	4.7	4.3	3.8	3.3	2.3
	2900			4.8	4.8	4.7	4.7	4.6	4.6	4.5	4.2	3.6	3.1	2.2
	2800			4.6	4.6	4.5	4.5	4.5	4.4	4.3	4.0	3.5	3.0	2.1
	2700			4.4	4.4	4.3	4.3	4.3	4.2	4.1	3.8	3.3	2.9	2.0
	2600			4.2	4.2	4.1	4.1	4.1	4.0	3.9	3.7	3.2	2.7	1.9
	2500			4.0	4.0	4.0	3.9	3.9	3.8	3.8	3.5	3.0	2.6	1.8
	2400			3.8	3.8	3.8	3.7	3.7	3.7	3.6	3.3	2.9	2.5	1.7
	2300			3.6	3.6	3.6	3.6	3.5	3.5	3.4	3.2	2.7	2.3	1.6
	2200			3.4	3.4	3.4	3.4	3.3	3.3	3.2	3.0	2.6	2.2	1.5
	2100			3.2	3.2	3.2	3.2	3.2	3.1	3.0	2.8	2.4	2.1	1.4
	2000			3.1	3.1	3.0	3.0	3.0	2.9	2.9	2.6	2.3	1.8	1.3
	1900			2.9	2.9	2.8	2.8	2.8	2.7	2.7	2.5	2.1	1.7	1.3
	1800			2.7	2.7	2.6	2.6	2.6	2.6	2.5	2.3	1.8	1.6	1.2
	1700			2.5	2.5	2.4	2.4	2.4	2.4	2.3	2.1	1.7	1.5	1.1
	1600			2.3	2.3	2.3	2.2	2.2	2.2	2.1	1.8	1.6	1.4	1.0
	1500			2.1	2.1	2.1	2.1	2.0	2.0	1.8	1.7	1.4	1.3	0.9
	1400			1.8	1.8	1.7	1.7	1.7	1.7	1.6	1.5	1.3	1.1	0.8
Flèche <i>Deflection (mm)</i>				46.5	46.5	47	47	47.5	48	49	51.5	56.5	62.5	77.5
Surface totale empreinte <i>Total contact area (cm²)</i>				777	777	782	783	787	793	801	830	891	956	1128
Section écrasée <i>Laden section width (mm)</i>				410	410	411	411	411	412	412	414	419	423	436
Rayon écrasé <i>Laden radius (mm)</i>				501	501	501	501	501	500	499	497	491	486	470
Circonférence de roulement <i>Rolling circumference (mm)</i>				3330	3330	3329	3329	3329	3328	3327	3325	3319	3314	3303

Pressions arrondies au 1/10 de bar le plus proche - *Pressures are rounded to nearest 0.1 bar*

Conditions nominales voir fiche BR110081A - *For nominal conditions see sheet BR110081A*

PROPRIETE MICHELIN - MICHELIN PROPERTY

Reproduction ou communication interdites sans accord préalable

Reproduction or communication prohibited without prior approval



MICHELIN

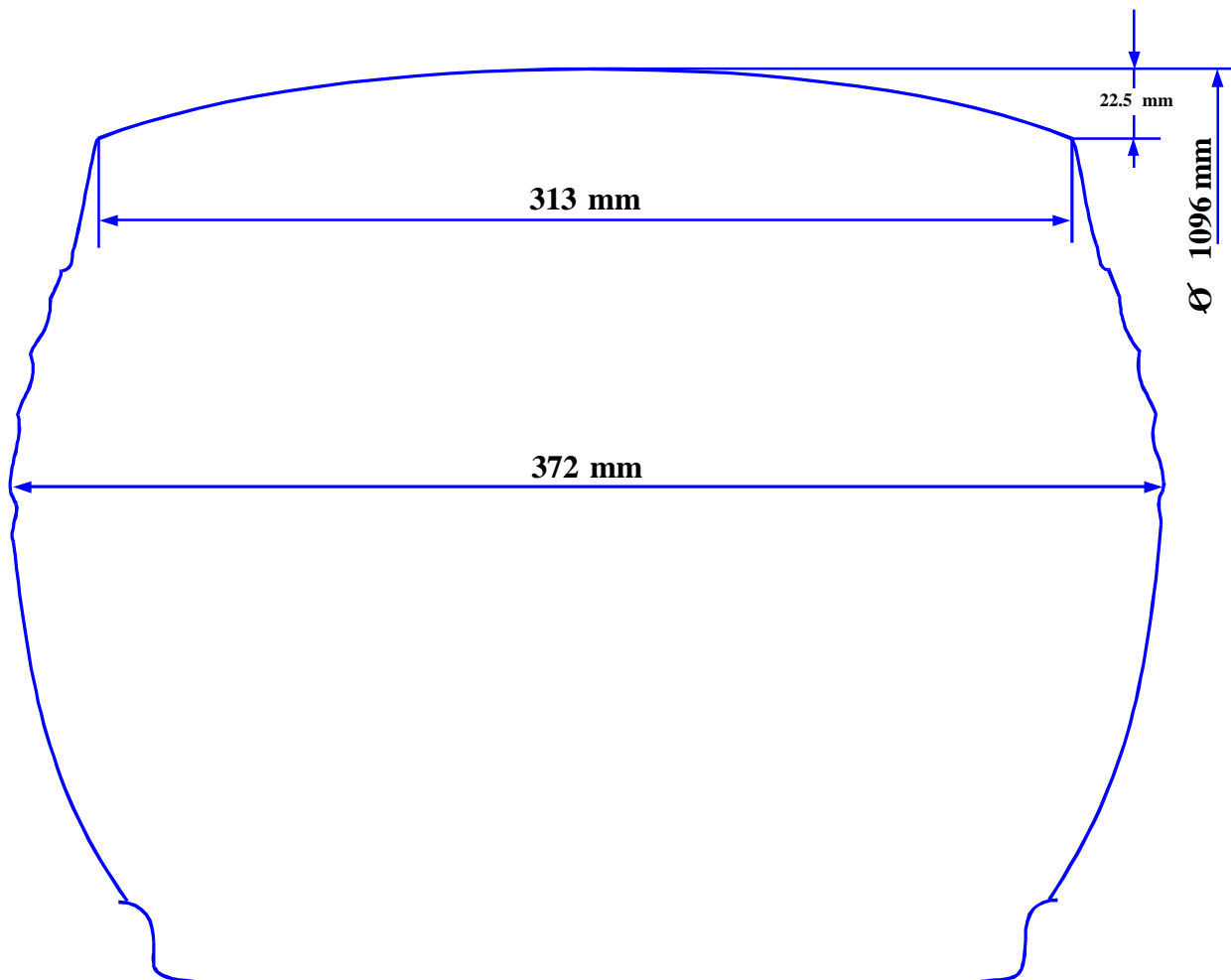
Date : February 10 1997

Ref. AK110081

SCHEMA COTE DE LA SECTION TRANSVERSALE*

DIMENSIONED TIRE SECTION SKETCH*

365/80 R 20 XZL TL 152 K MPT



JANTE DE MESURE - MEASURING RIM 11-20

PRESSION DE GONFLAGE - INFLATION PRESSURE 6.0 bar

* Pas à l'échelle - *Not to scale*

PROPRIETE MICHELIN - MICHELIN PROPERTY

Reproduction ou communication interdites sans accord préalable

Reproduction or communication prohibited without prior approval



MICHELIN

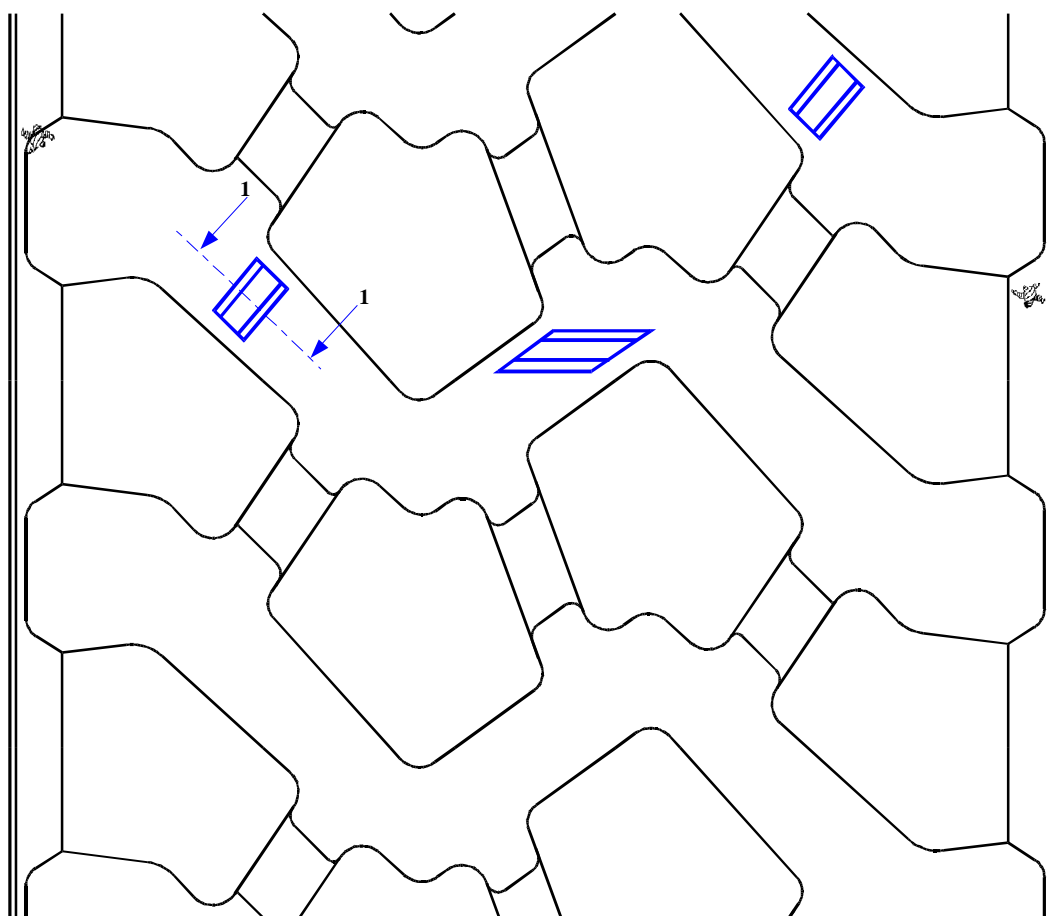
Date : February 10 1997

Ref. AJ 110081

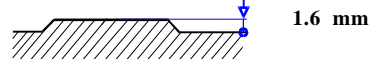
DESSIN DE LA BANDE DE ROULEMENT - *TREAD DESIGN*

365/80 R 20 XZL TL 152 K MPT

Profondeur de sculpture - *Tread depth* 19.9 mm



SECTION 1 - 1



Profondeur de recreusage - *Depth of regrooving* 4.0 mm

PROPRIETE MICHELIN - MICHELIN PROPERTY

Reproduction ou communication interdites sans accord préalable

Reproduction or communication prohibited without prior approval



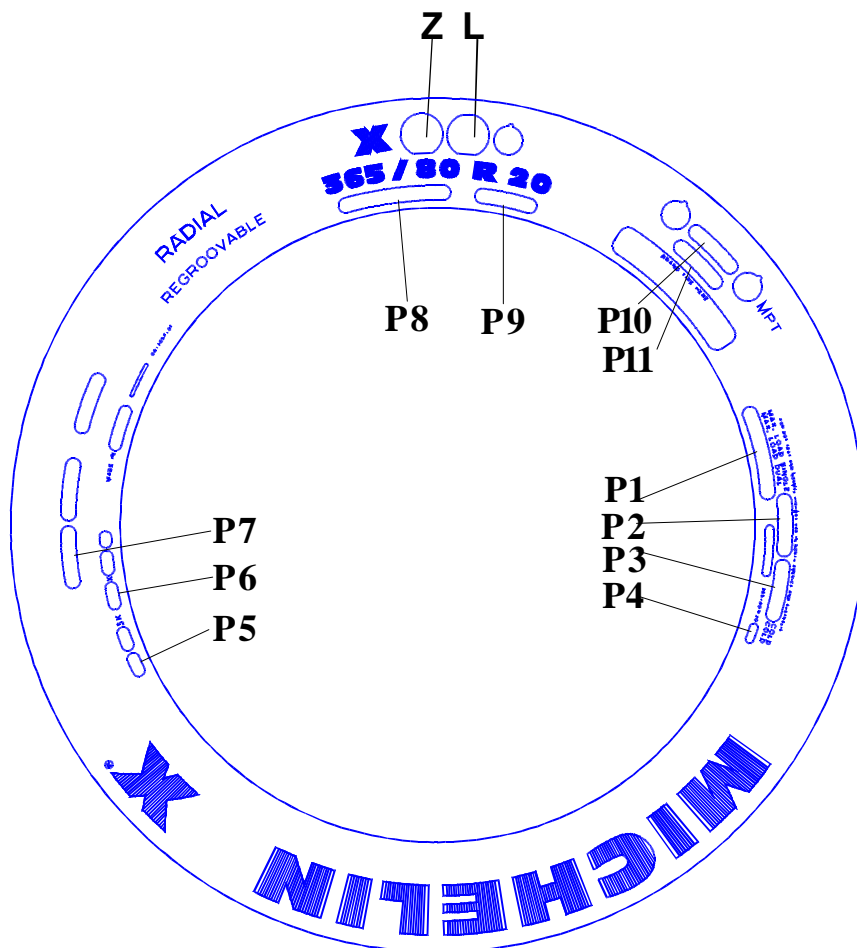
MICHELIN

Date : February 10 1997

Ref. AL110081

PLAN DE MARQUAGE - SIDEWALL MARKING PLAN

365/80 R 20 XZL TL 152 K MPT



FLANC B - SIDEWALL B

P1	P2	P3	P4	P5	P6	P7
TREAD: 4 STEEL PLIES SIDEWALL: 1 STEEL PLY	7830 LBS	AT 87 PSI	LRL	DOT	BRY	E2 0093792

P8	P9	P10	P11
14.5 R 20*	152 K	TUBELESS	MAY BE USED WITH TUBE

* LPC B uniquement

* LPC B only

PROPRIETE MICHELIN - MICHELIN PROPERTY

Reproduction ou communication interdites sans accord préalable
Reproduction or communication prohibited without prior approval



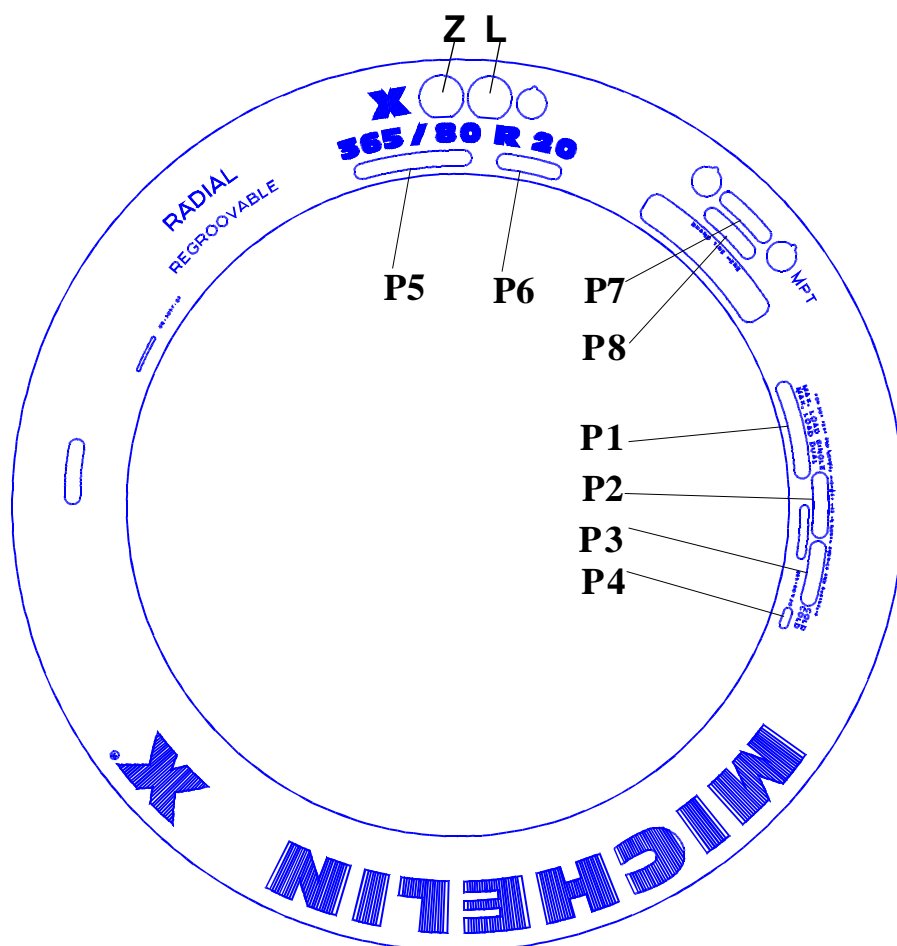
MICHELIN

Date : February 10 1997

Ref. AW110081

PLAN DE MARQUAGE - SIDEWALL MARKING PLAN

365/80 R 20 XZL TL 152 K MPT



FLANC A - SIDEWALL A

P1	P2	P3	P4	P5	P6	P7	P8
TREAD: 4 STEEL PLIES SIDEWALL: 1 STEEL PLY	7830 LBS	AT 87 PSI	LRL	14.5 R 20*	152 K	TUBELESS	MAY BE USED WITH TUBE

* LPC B uniquement

* LPC B only

PROPRIETE MICHELIN - MICHELIN PROPERTY

Reproduction ou communication interdites sans accord préalable
Reproduction or communication prohibited without prior approval



MICHELIN

Date : February 10 1997

Ref. AR110081

365/80 R 20 XZL TL 152 K MPT

Charges et pressions d'utilisation en monte simple
Loads and inflation pressures chart in single fitment

Utilisations spéciales - *Special conditions*

Pressions d'utilisation Piste, sable/boue - *Pressures when used on track, sand/mud (bar)*

Charge par enveloppe <i>Load per tire</i> (Kg)		Vitesse - <i>Speed</i> (Km/h)	
		Piste - <i>Track</i> 65	Sable/boue - <i>Sand/mud</i> 20
Conditions exceptionnelles	8880		
	6390		
	5330		
	4440		
	4080		
	3980		
	3850		
Special conditions	3690		
	3620		
Conditions nominales	3550	4.7	2.4
	3500	4.6	2.4
	3400	4.5	2.3
	3300	4.3	2.2
	3200	4.2	2.1
	3100	4.0	2.0
	3000	3.9	1.9
	2900	3.7	1.8
	2800	3.5	1.8
	2700	3.4	1.7
	2600	3.2	1.6
	2500	3.1	1.5
	2400	2.9	1.4
	2300	2.8	1.4
	2200	2.6	1.3
	2100	2.5	1.2
	2000	2.3	1.1
	1900	2.2	1.0
	1800	1.9	0.9
	1700	1.8	0.9
Nominal conditions	1600	1.6	0.8
	1500	1.5	0.7
	1400	1.4	0.6
Flèche <i>Deflection (mm)</i>		55.5	88
Surface totale empreinte <i>Total contact area (cm²)</i>		880	1244
Section écrasée <i>Laden section width (mm)</i>		418	444
Rayon écrasé <i>Laden radius (mm)</i>		493	460
Circonférence de roulement <i>Rolling circumference (mm)</i>		3320	3296

Pressions arrondies au 1/10 de bar le plus proche - *Pressures are rounded to nearest 0.1 bar*

Conditions nominales voir fiche BR110081A - *For nominal conditions see sheet BR110081A*

PROPRIETE MICHELIN - MICHELIN PROPERTY

Reproduction ou communication interdites sans accord préalable

Reproduction or communication prohibited without prior approval



MICHELIN

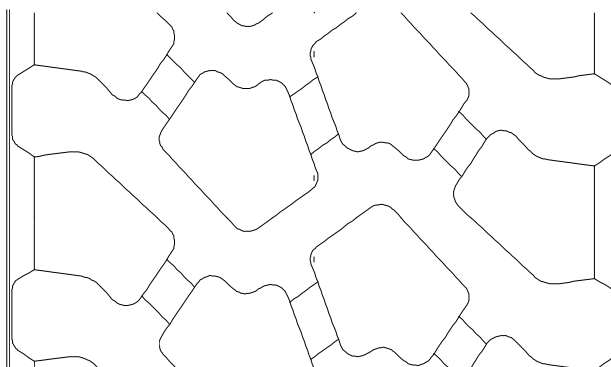
Date : February 10 1997

Ref. AX110081

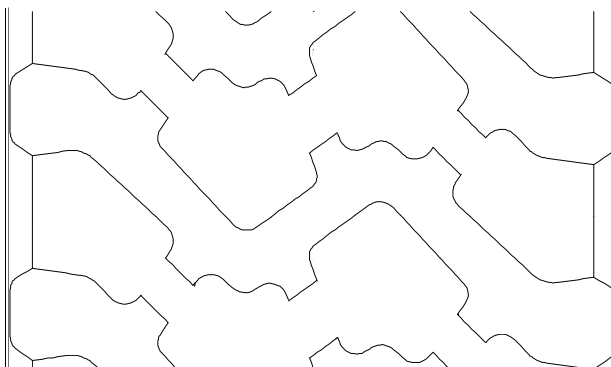
DESSIN DE RECREUSAGE - *REGROOVING DESIGN*

365/80 R 20 XZL TL 152 K MPT

NEUF-NEW



USE - PART WORN

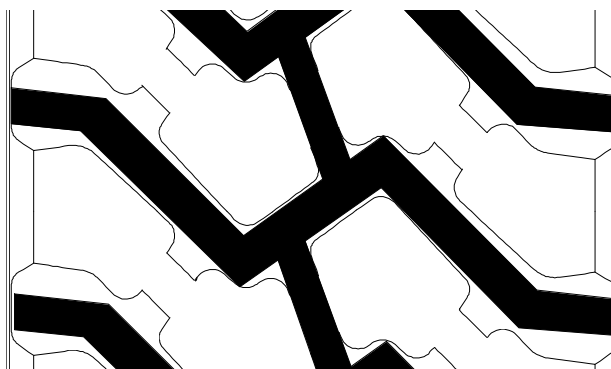


RECREUSE-REGROOVED

Profondeur de recreusage 4 mm
Regrooving depth

Lame R4
Blade

Largeur de recreusage 10 à 12 mm
Regrooving width



PROPRIETE MICHELIN - MICHELIN PROPERTY

Reproduction ou communication interdites sans accord préalable
Reproduction or communication prohibited without prior approval



MICHELIN

Date : February 10 1997

Ref. 110081_2

365/80 R 20 XZL TL 152 K MPT



136524

PROPRIETE MICHELIN - MICHELIN PROPERTY

Reproduction ou communication interdites sans accord préalable
Reproduction or communication prohibited without prior approval