

MERCEDES SPRINTER CDI
from 2000

(FRONT EVAPORATOR)
WITH POWER STEERING

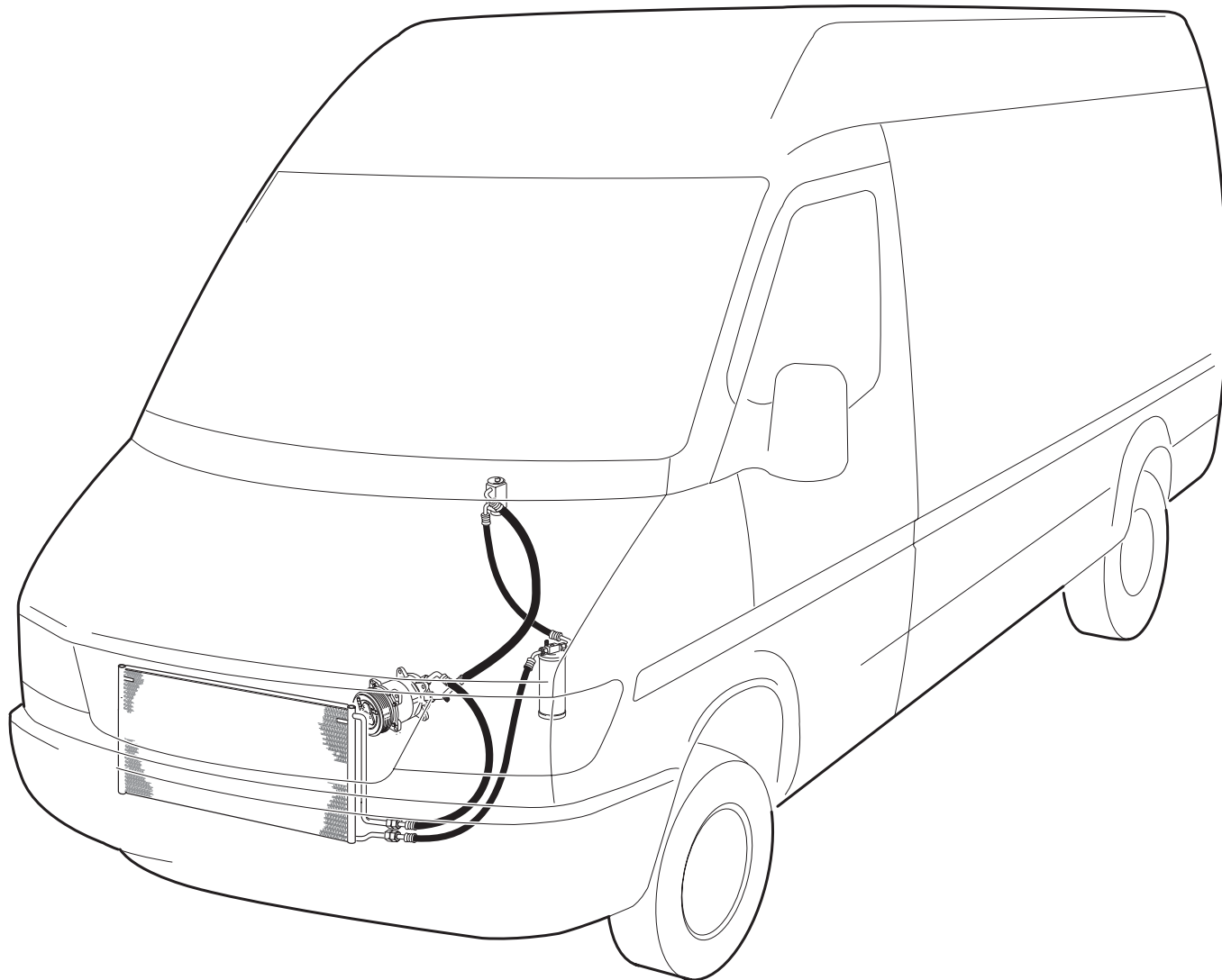
MER 40222



MERCEDES SPRINTER CDI FROM 2000

AIR CONDITIONER

INSTALLATION INSTRUCTIONS



**REFRIGERANT CHARGE
FOR 134a
 0.750 ± 0.050 kg**

**FOR SERVICE USE
OIL SP-20**

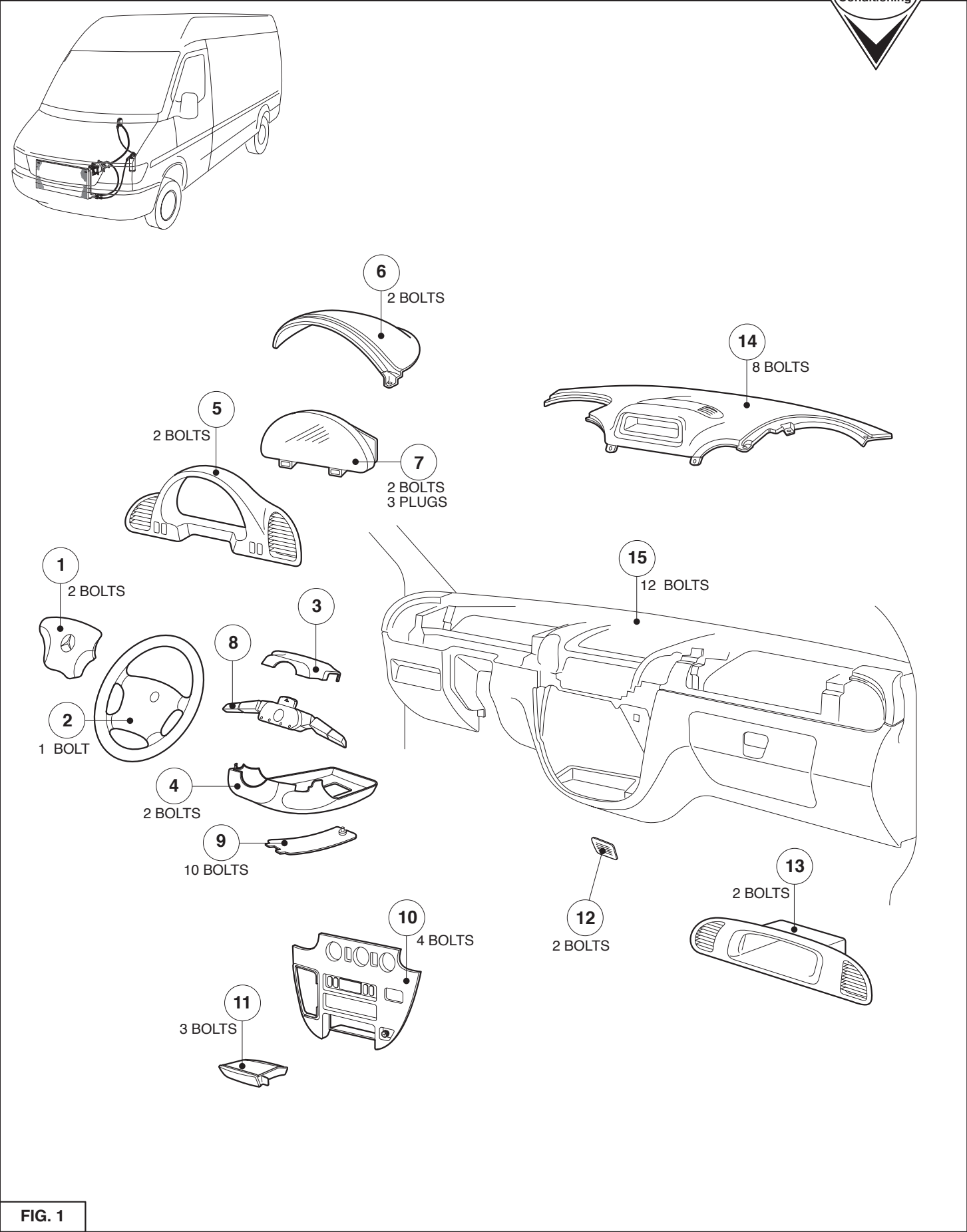


FIG. 1

REMOVE PARTS IN SEQUENCE OF NUMBERS.

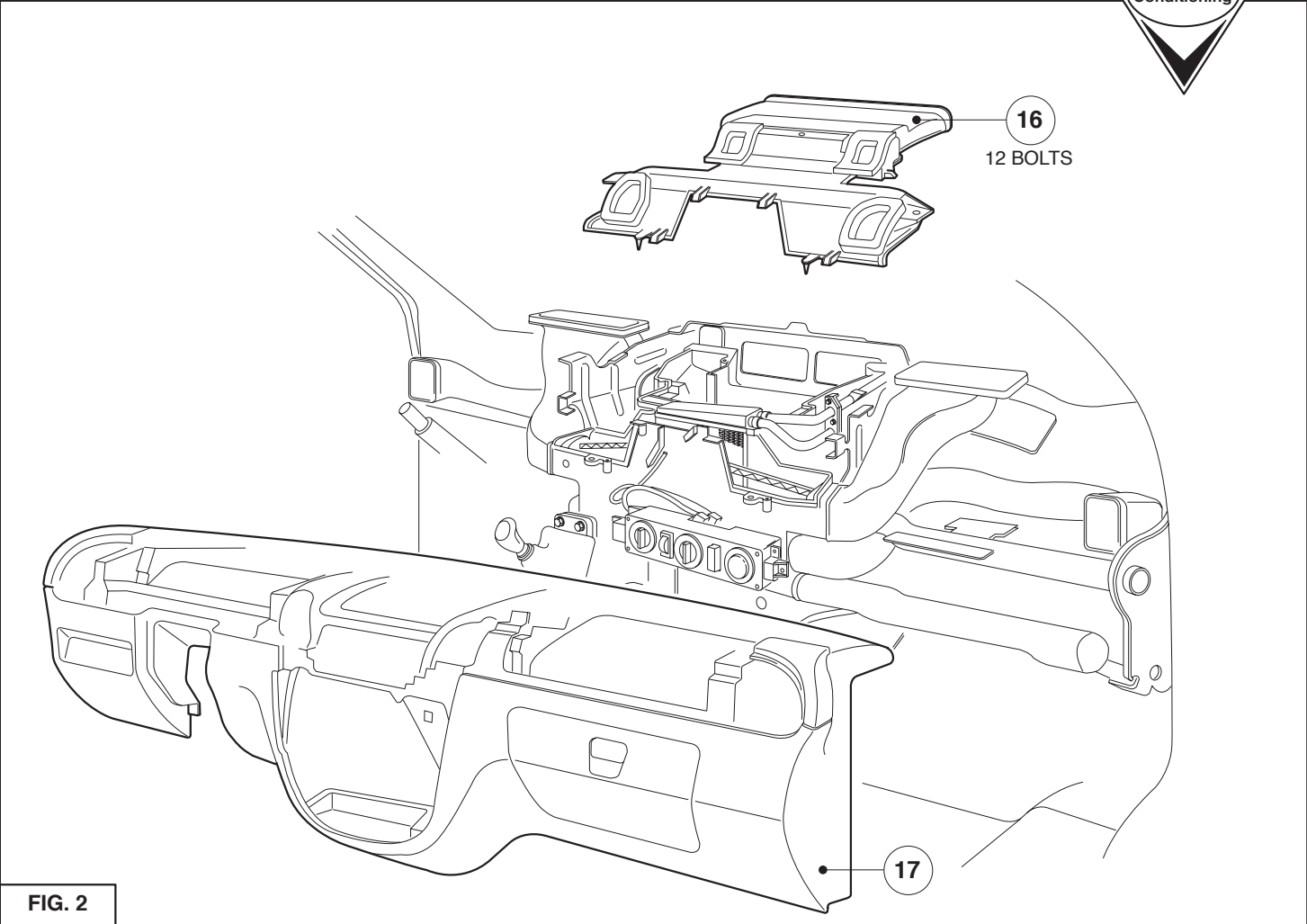


FIG. 2

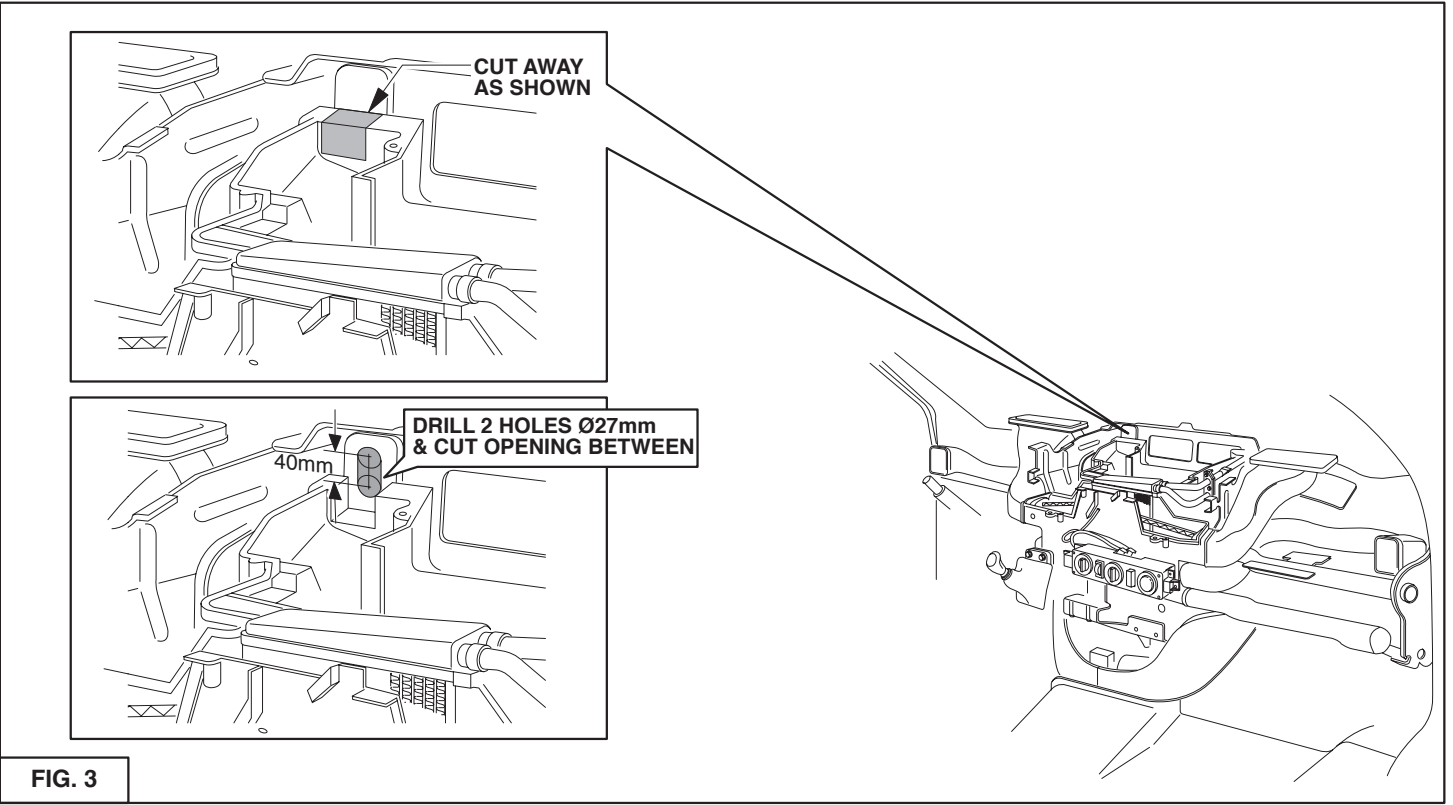


FIG. 3

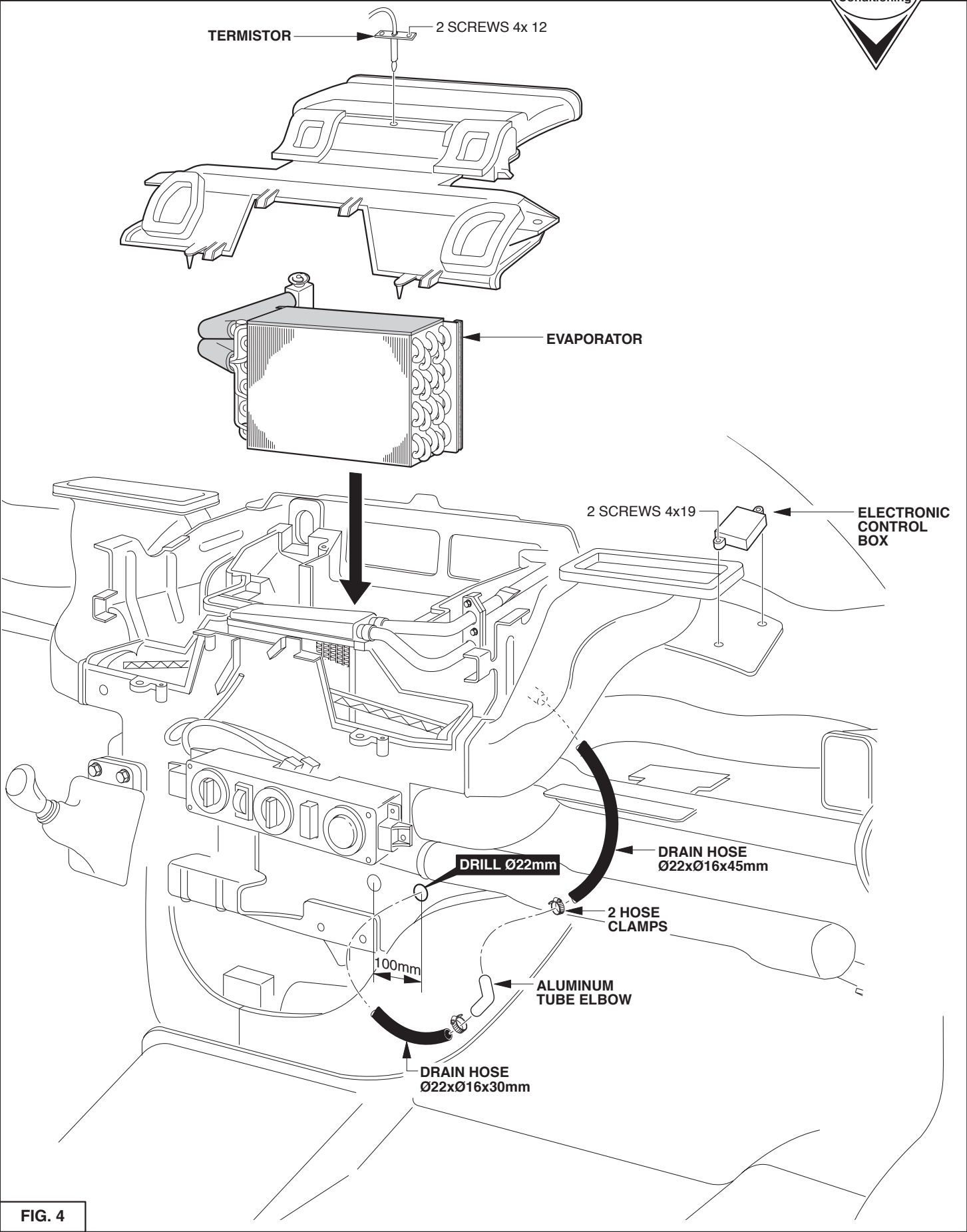
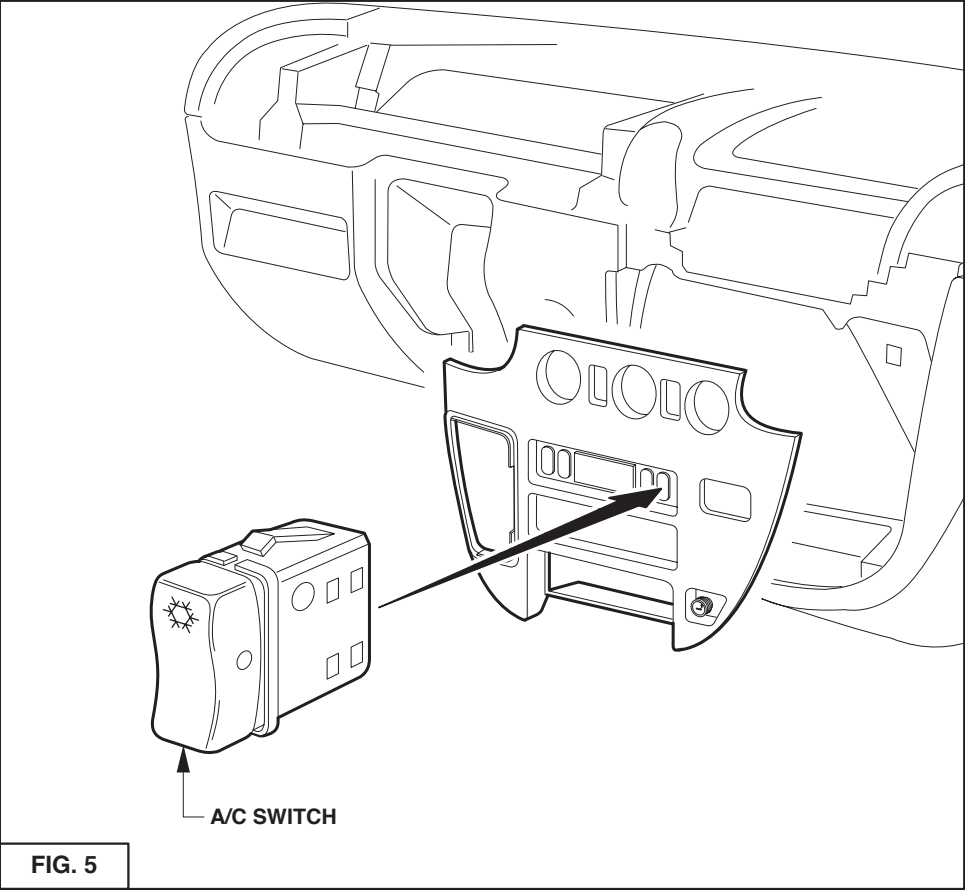


FIG. 4



MERCEDES SPRINTER CDI from 2000

ENGINE KIT INSTALLATION

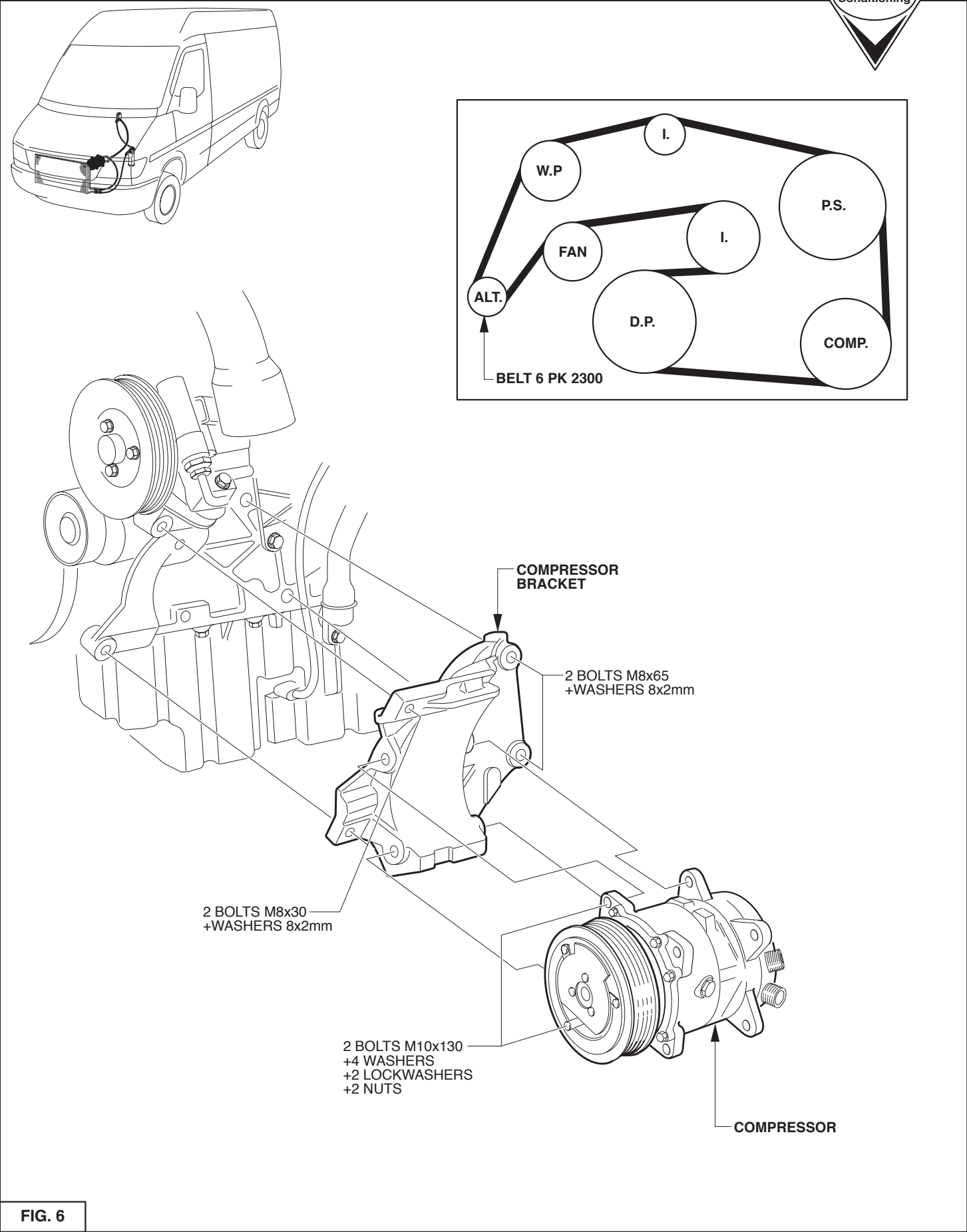


FIG. 6

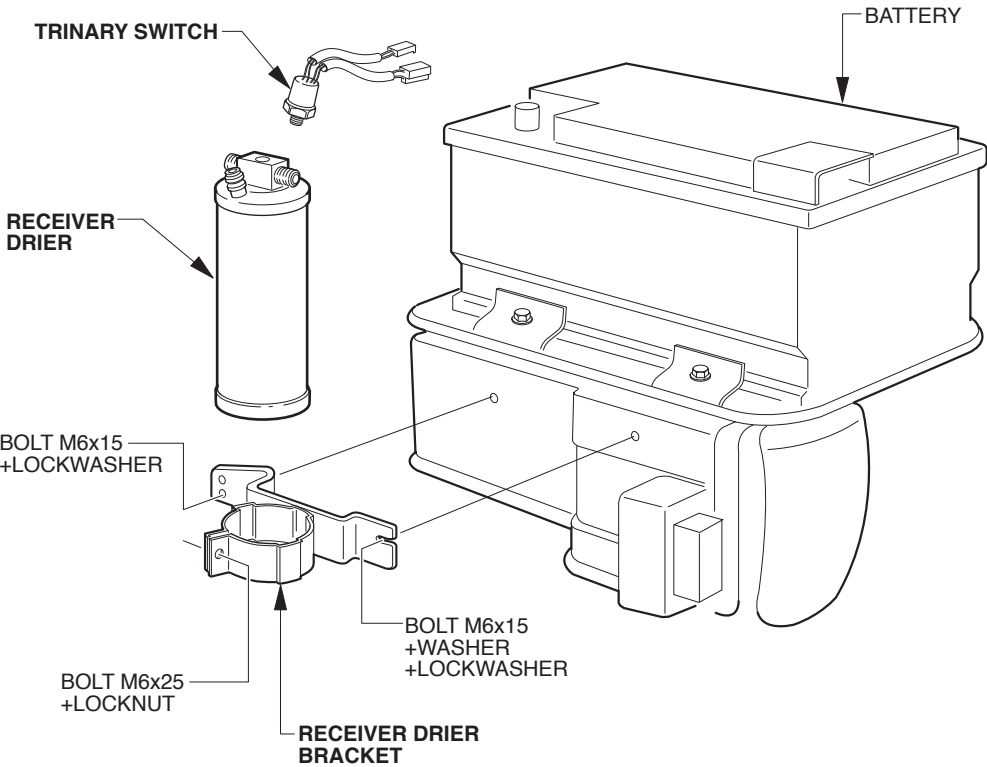
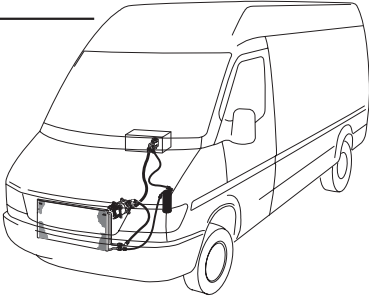


FIG. 7

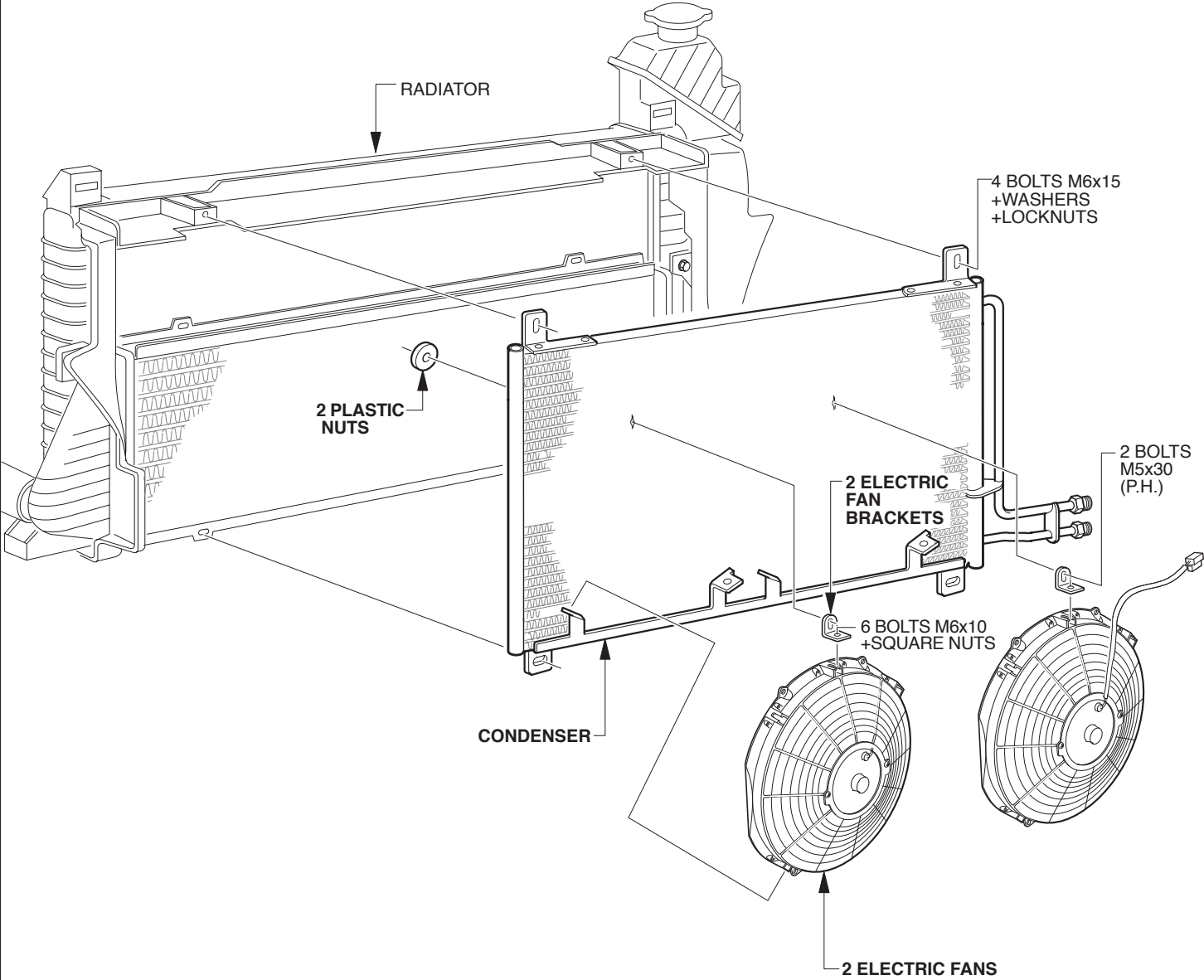


FIG. 8

MERCEDES SPRINTER CDI

REFRIGERANT HOSES INSTALLATION

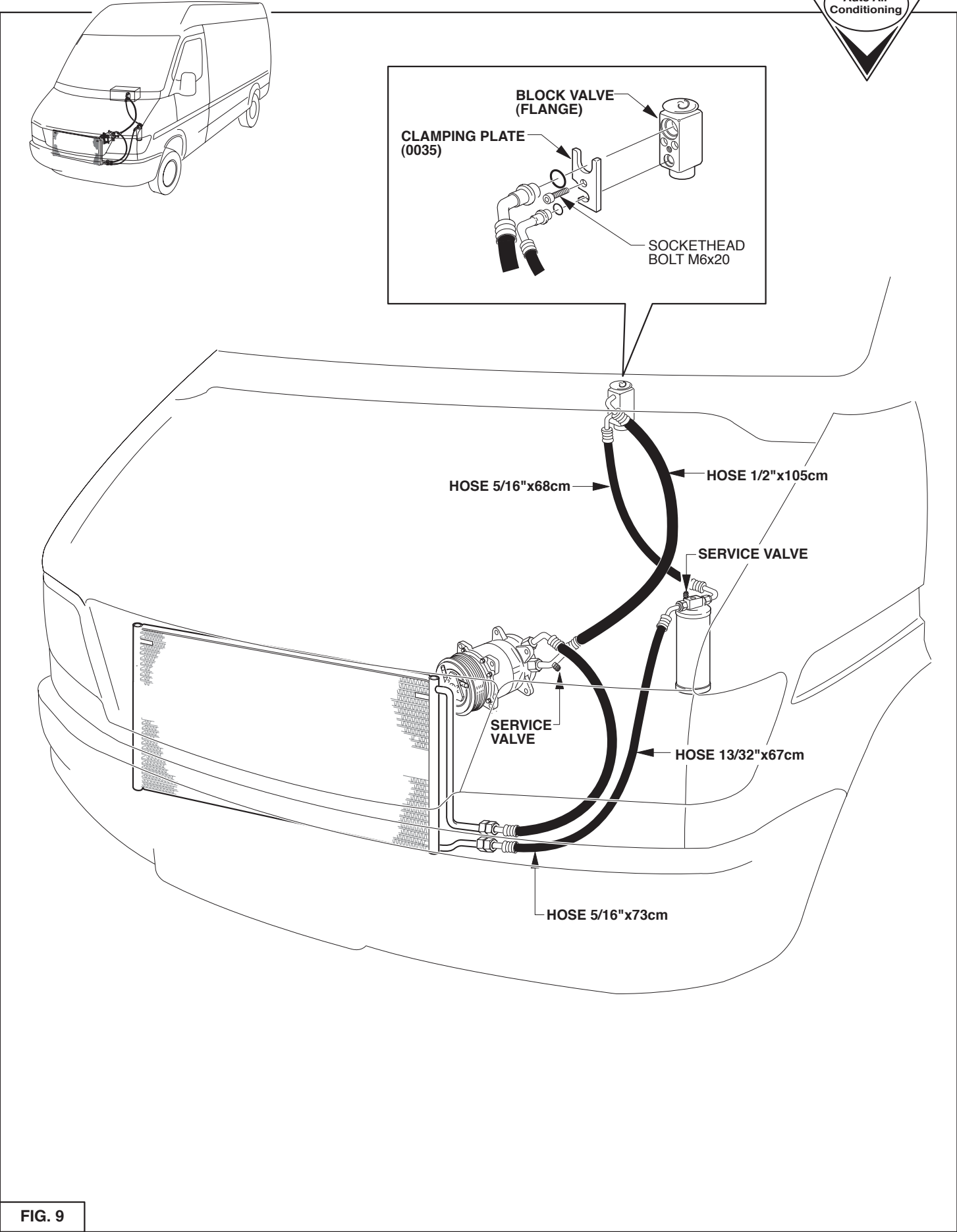


FIG. 9

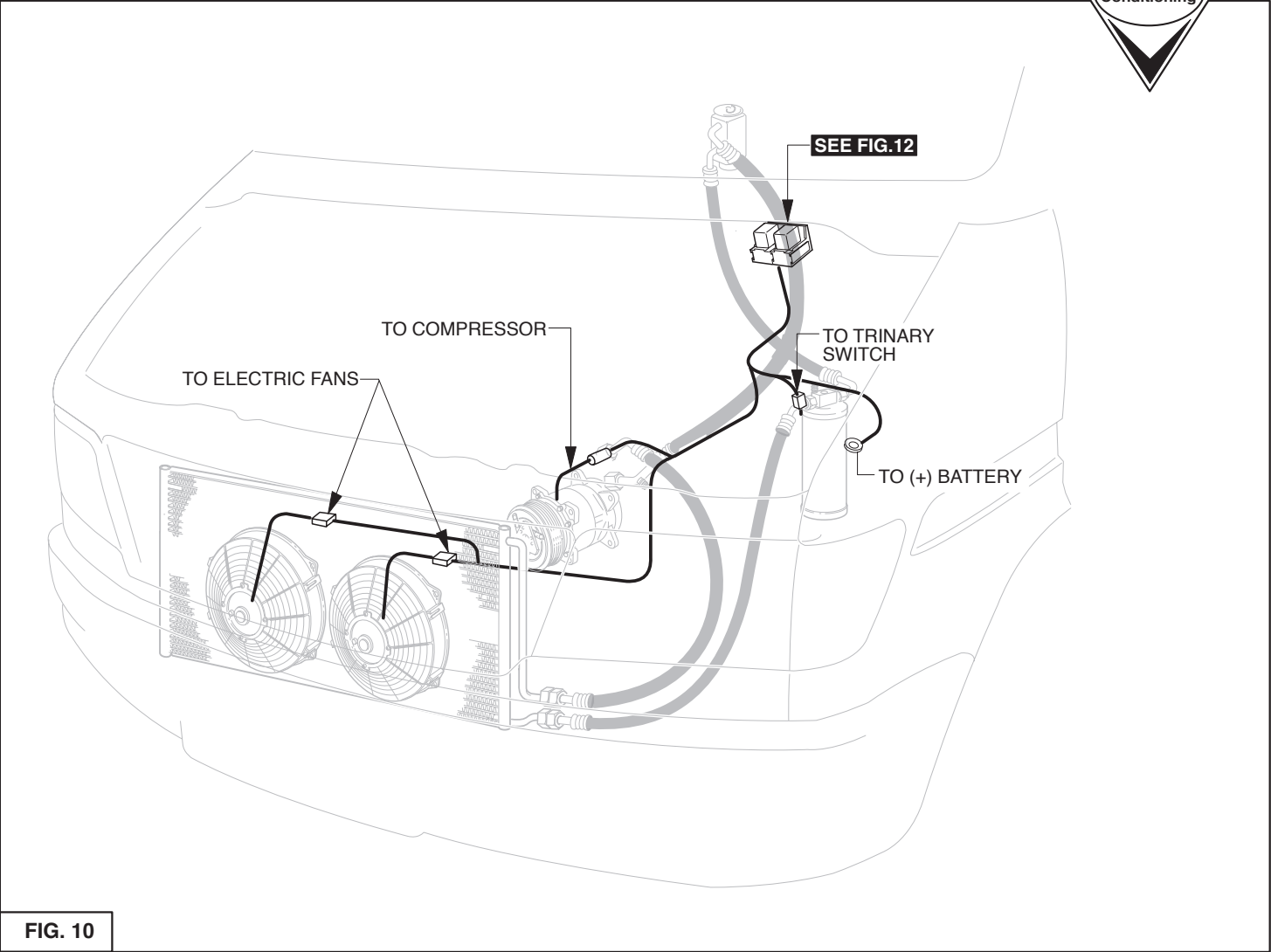


FIG. 10

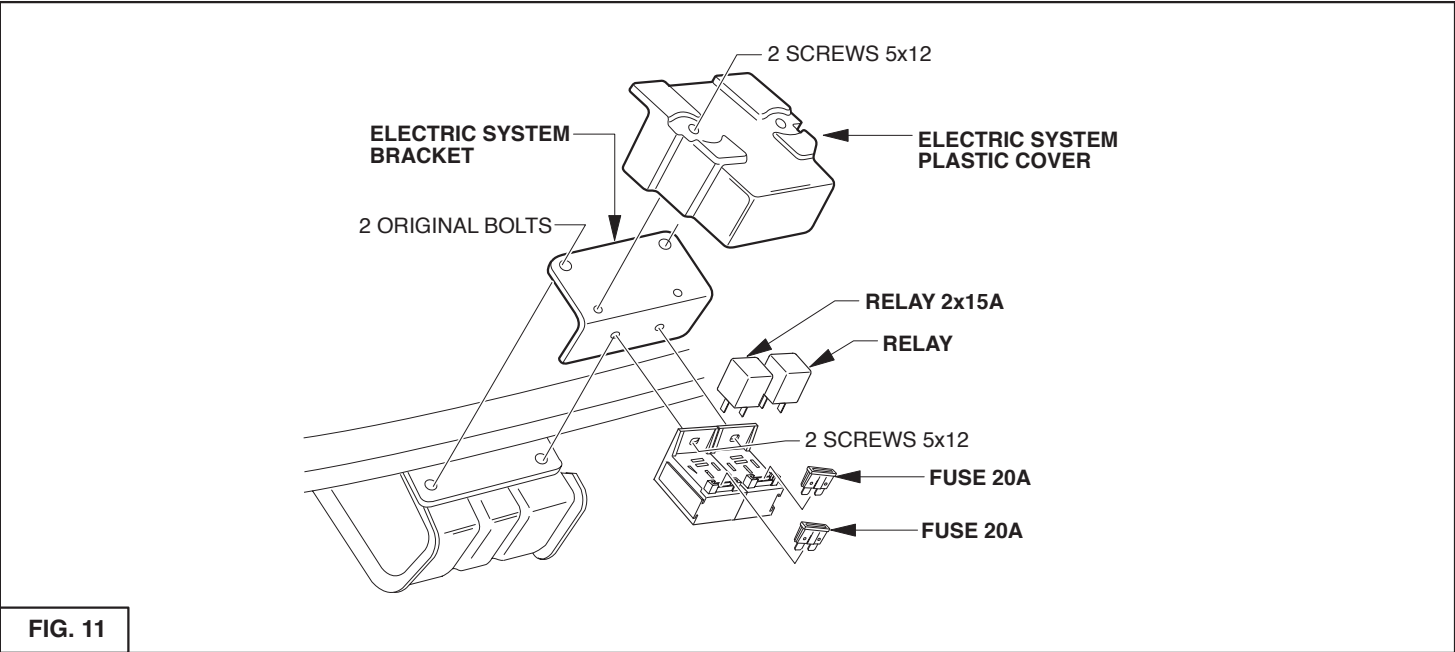


FIG. 11

ALEX

ORIGINAL
Auto Air
Conditioning

PRESSOR

The diagram illustrates the electrical system for a vehicle's air conditioning. Key components and their connections include:

- Electric Fans:** Two fans are shown, each connected to a brown wire to ground and a yellow wire to the relay.
- Compressor:** Connected to a yellow wire from the relay, a black wire to ground, and a brown wire to the battery.
- Relay (2x15A):** Features terminals 87, 86, 85, and 30. It is controlled by a blue wire from the primary switch and a brown wire from the electronic control box. It powers the fans and compressor.
- Fuses (20A):** Two fuses are shown, each connected to a white wire from the battery and a brown wire to the relay.
- Battery:** Provides power to the system, with a brown wire to the relay and a yellow wire to the compressor.
- Electronic Control Box:** Receives power from the battery (white wire) and controls the relay (brown wire). It also houses a thermistor.
- Primary Switch:** A blue wire connects it to the relay, and a brown wire connects it to the electronic control box.
- Single A/C Switch Plug:** A 10-pin plug with wires: 1 (green), 2 (yellow), 3 (brown), 4 (black), 5 (brown), 6 (black), 7 (brown), 8 (black), 9 (brown), 10 (black).
- Original Speed Switch Plug:** A 4-pin plug with wires: 1 (yellow), 2 (brown), 3 (black), 4 (black).
- Original Interior Light Switch Plug:** A 10-pin plug with wires: 1 (brown), 2 (black), 3 (blue), 4 (brown), 5 (black), 6 (blue), 7 (brown), 8 (black), 9 (brown), 10 (black).
- Wiring Details:** Various colored wires (blue, brown, yellow, black, white, green, grey, red) connect the components. A "CUT" symbol indicates where to cut an original wire. A "RED WIRE CONNECTOR" is used to join wires.