

TIRES WITH ABILITY



MICHELIN® TIRES FOR ON/OFF ROAD AND REFUSE APPLICATIONS

YOU HAVE A JOB TO DO

The last thing you want to worry about is whether your tires can handle it. MICHELIN® ON/OFF road and Refuse tires are engineered with the ability to handle the toughest challenges your application can dish out, providing dependable performance which maximizes your uptime and operational efficiency.

DURABILITY



When you're on the job, there's just no time for delays affecting your work and your bottom line. That's why MICHELIN® ON/OFF road tires are made to maximize uptime. Robust treads and extra-thick sidewalls help reduce damage from punctures and impacts. Plus, on many of our tires, Michelin's Co-Ex Technology with two layers of application-specific compounds helps preserve the casing and protects the tread surface from aggression or scrub.

WORKABILITY



In ON/OFF road and refuse applications, tires can really take a beating. That's why MICHELIN® ON/OFF road and Refuse tires—as well as our Retreads—are engineered to rise to the challenge. They're made to get the job done right, while standing up to the challenges of the toughest applications, from urban scrub to heavy impacts to mud. Take advantage of innovative tread designs that help improve traction and mud evacuation, thus reducing the likelihood of getting stuck and maximizing the uptime of your fleet.

RETREADABILITY



In ON/OFF road markets, and even more so in refuse, fleets demand tires with casings designed for multiple retreads. MICHELIN® tire casings are engineered to resist heat and damage, making them extraordinarily long-lasting. It's here that we deliver on designs which provide years of service, including retreads, and maximize the tire lifecycle.

PROFITABILITY



At the end of the day, it all comes down to the bottom line. MICHELIN® ON/OFF road and Refuse tires deliver better removal mileage and casings that can be used multiple times in retreads, leading to a more cost-efficient operation. Our tires also provide realized savings by standing up to tough applications which maximizes your fleet's uptime. The result? A positive impact on your profitability.

Together, increased removal mileage, durable casings and time savings all add up to a bigger bottom line, proving once again that The Right Tire Changes Everything™.

MICHELIN® ON/OFF ROAD TIRES

WHICH TIRE IS RIGHT FOR YOUR APPLICATION?



ON/OFF ROAD APPLICATION	FUNCTIONALITY/PERFORMANCE				
	OFF-ROAD TRACTION	SNOW TRACTION (Packed)	SNOW TRACTION (Loose)	CUT/CHIP RESISTANCE	ON/OFF ROAD SPLIT (%)
XFE™ (wb)	■ □ □ □ □	■ ■ □ □ □	■ ■ □ □ □	■ ■ ■ □ □	100/0
XTY®2	■ ■ □ □ □	■ ■ □ □ □	■ ■ □ □ □	■ ■ ■ ■ ■	80/20
XZY®	■ ■ ■ □ □	■ ■ □ □ □	■ ■ □ □ □	■ ■ ■ ■ ■	80/20
XZY®3	■ ■ ■ □ □	■ ■ □ □ □	■ ■ □ □ □	■ ■ ■ ■ ■	80/20
XZY®3 (wb)	■ ■ ■ □ □	■ ■ □ □ □	■ ■ □ □ □	■ ■ ■ ■ ■	80/20
X One® XZY®3	■ ■ ■ □ □	■ ■ □ □ □	■ ■ □ □ □	■ ■ ■ ■ ■	80/20
XDE® M/S	■ ■ ■ □ □	■ ■ ■ □ □	■ ■ ■ □ □	■ ■ ■ □ □	70/30
X Works XDY®	■ ■ ■ □ □	■ ■ ■ □ □	■ ■ ■ ■ □	■ ■ ■ ■ ■	60/40
XDY-EX2™	■ ■ ■ ■ □	■ ■ ■ □ □	■ ■ ■ ■ □	■ ■ ■ ■ ■	50/50
XZL™ (wb)	■ ■ ■ ■ □	■ ■ ■ □ □	■ ■ ■ ■ □	■ ■ ■ ■ ■	20/80
XZL™	■ ■ ■ ■ ■	■ ■ ■ □ □	■ ■ ■ ■ □	■ ■ ■ ■ ■	10/90
XDL®	■ ■ ■ ■ ■	■ ■ ■ □ □	■ ■ ■ □ □	■ ■ ■ ■ ■	10/90

Scale of ■ (lowest) to ■■■■■ (highest)

MICHELIN® ON/OFF ROAD TIRES

MICHELIN® ON/OFF ROAD TIRES

SIZE	LOAD RANGE	TREAD NAME	CATALOG NUMBER	TREAD DEPTH 32ND	WHEEL POSITION				DIRECTIONAL
					AWP*	STEER	DRIVE	TRAILER	
10R22.5	G	XDE® M/S	87357	23			•		
11R22.5	G	XZY®3	84455	24	•				
	G	XDE® M/S	73493	26			•		
	H	X WORKS XDY®	89725	30			•		•
	H	XZY®3	80927	24	•				
	H	XDE® M/S ⚡	73927	28			•		
11R24.5	G	XZY®3	47945	24	•				
	G	XDE® M/S	51273	26			•		
	H	X WORKS XDY®	90022	30			•		•
	H	XDY-EX2™	23274	32			•		
	H	XZY®3	79250	24	•				
	H	XDE® M/S ⚡	46695	28			•		
12.00R24	H	XZY®	29163	23	•				
	J	XDL™	30049	38			•		
12R22.5	H	XZY®3	47947	24	•				
12R24.5	H	XZY®3	47951	24	•				
275/70R22.5	J	XTY®2	42407	21				•	
275/80R22.5	G	XDE® M/S	61426	26			•		
315/80R22.5	L	XZY®3	40200	23	•				
385/65R22.5	J	XZY®3 (wb)	53779	22	•				
	L	XFE™ (wb) (Steer)	36991	21		•			
395/85R20	J	XZL™	54331	33	•				
425/65R22.5	L	XFE™ (wb) (Steer)	11829	21		•			
	L	XZL™ (wb)	53254	26	•				
	L	XZY®3 (wb)	40321	23	•				
445/65R22.5	L	XZL™ (wb)	84103	27	•				
	L	XZY®3 (wb)	83691	23	•				
	M	XFE™ (wb) (Steer)	10805	21		•			
455/55R22.5	M	X One® XZY®3	11629	23	•				

*AWP-All Wheel Position

⚡ Within the MICHELIN® XDE® M/S tire line, sizes with the designation ⚡ have an enhanced chip and cut resistance tread compound compared to other sizes in the line.

MICHELIN® ON/OFF ROAD TIRES

ALL-POSITION



XFE™ WIDE BASE

The wide-base radial designed to deliver high mileage and a quiet ride on heavy front axle in regional and highway applications.



XZY®3

All-position radial designed for exceptional wear and traction in mixed ON/OFF road service.



XZY®3 WIDE BASE

All-position wide base radial designed for heavy front axle service in mixed service applications.



XZL™ WIDE BASE

The all-position wide base radial designed for optimized ON/OFF road traction.



XZL™

The all-terrain, all-position radial for special service such as Emergency Response vehicles.



XZY®

All-position radial for ON/OFF road service.

DRIVE

NEW



X Works XDY®

Next generation ON/OFF road drive tire optimized for exceptional traction and wear in mixed and severe ON/OFF road service.

NEW



XDY-EX2™

Our most aggressive drive axle tire designed for commercial vehicles operating in extreme conditions where maximum traction is the priority.



XDE® M/S

The open shoulder drive axle engineered for excellent mileage and traction across a wide range of applications.



XDL®

The high capacity tube type drive tire designed for mostly off road application such as logging and mining.

TRAILER



XTY®2

The low profile radial designed for rugged, mixed trailer service.

X ONE®



X One® XZY®3

All-position radial innovation designed for optimized weight savings and significant fuel savings in ON/OFF road operations.

MICHELIN® REFUSE TIRES



WHICH TIRE IS RIGHT FOR YOUR APPLICATION?

REFUSE APPLICATION	FUNCTIONALITY/PERFORMANCE			
	WEAR LIFE	RETREADABILITY	OFF ROAD TRACTION	SNOW TRACTION (Packed)
XZU®S2	■ ■ ■ ■ ■	■ ■ ■ ■ ■	■ ■ ■ ■ ■	■ ■ ■ ■ ■
XZU®S (wb)	■ ■ ■ ■ ■	■ ■ ■ ■ ■	■ ■ ■ ■ ■	■ ■ ■ ■ ■
X One® XZU®S	■ ■ ■ ■ ■	■ ■ ■ ■ ■	■ ■ ■ ■ ■	■ ■ ■ ■ ■

Scale of ■ (lowest) to ■■■■■ (highest)

MICHELIN® REFUSE TIRES									
SIZE	LOAD RANGE	TREAD NAME	CATALOG NUMBER	TREAD DEPTH 32ND	WHEEL POSITION				DIRECTIONAL
					AWP*	STEER	DRIVE	TRAILER	
315/80R22.5	L	XZU®S2	77510	23	•				
425/65R22.5	L	XZU®S (wb)	03785	23	•				
455/55R22.5	M	X One® XZU®S	28513	23	•				

*AWP-All Wheel Position

ALL-POSITION

NEW



XZU®S2

Next generation all-position tire with high carrying capacity designed for exceptional treadlife in high scrub urban applications such as refuse vehicles.



XZU®S WIDE BASE

All-position radial with high carrying capacity designed for exceptional tread life in high scrub urban applications, such as refuse vehicles.

X ONE®



X One® XZU®S

All-position radial innovation designed for optimized weight savings and significant fuel savings in urban regional operations.



REFUSE FEATURED RETREADS

The same tread designs. The same engineering. The same exacting standards as every new MICHELIN® tire—in a retread. No other retread can boast the use of Michelin's new-tire technology and rigorous quality control, so you can feel completely confident that you're getting the same outstanding quality and reliability you'd get in a brand new MICHELIN® tire.

STANDARD SIZES

Tread Size	220	230	240	250	270	280
XDU®S	32	32	32	32	32	
XZU®S	26	26	26	26	26	26

NEW

WIDE BASE AND MICHELIN® X ONE® RETREAD SIZES

Tread Size	290/345 ⁽¹⁾	320/365 ⁽¹⁾	350/395 ⁽¹⁾	390/430 ⁽¹⁾
XZA® Wide Base	19	19	19	
X One® XZU®S				23

(Tread Depth in Shaded Boxes)

For up-to-date product information please visit www.michelintruck.com

(1) Tread widths with two measurements have wings. The first number is tread base width in mm. The second number is the overall width, wing tip to tip.

Federal Motor Carrier Safety Regulations, 9 C.F.R. § 395.75 (d), specify that "no bus shall be operated with regrooved, recapped or retreaded tires on the front wheels."

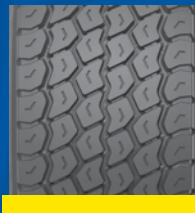
Retread tread selection should always consider the casing's original service application design and speed rating as published in that tire manufacturer's data book. Applying treads intended for a more severe service/speed application than the original casing design, or that would imply a higher speed service than the casing's original speed rating, is generally not recommended.

NEW SIZE



XZU®S Pre-Mold™ Retread

- More rubber mass to aid in scrub resistance
- Exclusive, unique two-layer compound designed to minimize internal casing temperatures for long tread & casing life
- Proprietary compound specifically formulated for demanding, high scrub operations
- Rib design optimized for high scrub, medium traction operations



X One® XZU®S Pre-Mold™ Retread

- Co-Ex technology, unique two layer compound designed to minimize casing temperature for longer casing life
- Enhanced protection against stone drilling from variable pitch groove walls and groove bottom protectors in all grooves
- Tread design optimized for all weather traction



ON/OFF ROAD FEATURED RETREADS

STANDARD SIZES

STANDARD SIZES										
Tread Size	170	180	190	200	210	220		230	240	250
Size\ #DIE	168\#5	177\#6	194\#7	203\#8	211\#8.5N	219\#9	225\#9.5	232\#10	238\#10.5	252\#12
Spread Axle Sizes ⁽¹⁾			185/225	195/235	205/245	215/255		225/265	245/285	
XDE® M/S	18	18	20	20	22	22		22	26	26
XDS®					25	25		25		25
XDY®				26	26	26	26	26	26 32	32
XDY-1™					30	30	30	30	30	
XZY®				18	18	18	18	18	18	20
XZY-1™					20	20	20	20	20	26
XZY-2™					26	26		26	26	26
XTY® SA				22	22	22				

WIDE BASE RETREAD SIZES

Tread Size	290/345 ⁽¹⁾	320/365 ⁽¹⁾	350/395 ⁽¹⁾
XTE2® Wide Base	20		
XZH™ Wide Base			20
XZL™ Wide Base			30
XZY® Wide Base		20	

(Tread Depth in Shaded Boxes)

For up-to-date product information please visit www.michelintruck.com

(1) Tread widths with two measurements have wings. The first number is tread base width in mm. The second number is the overall width, wing tip to tip.

Federal Motor Carrier Safety Regulations, 9 C.F.R. § 395.75 (d), specify that "no bus shall be operated with regrooved, recapped or retreaded tires on the front wheels."

Retread tread selection should always consider the casing's original service application design and speed rating as published in that tire manufacturer's data book. Applying treads intended for a more severe service/speed application than the original casing design, or that would imply a higher speed service than the casing's original speed rating, is generally not recommended.

www.michelintruck.com

MICHELIN NORTH AMERICA, INC., Greenville, South Carolina, USA

An Equal Opportunity Employer

Copyright © 2011 Michelin North America, Inc. All rights reserved. The Michelin Man is a registered trademark owned by Michelin North America, Inc.

To order more books, please call Promotional Fulfillment Center
1-800-677-3322, Option #2

Monday through Friday, 9 a.m. to 5 p.m. Eastern Time

MWL43968



XDY-1™ Pre-Mold™ Retread

- Compound for chip and cut resistance
- Directional tread optimized for traction
- Extra deep tread for extra protection and mileage



XZY-2™ Pre-Mold™ Retread

- Compound for chip and cut resistance
- Square buttressed shoulder helps provide impact protection from road hazards
- Zig-zag tread grooves and shoulder traction scallops help enhance traction in virtually all weather conditions