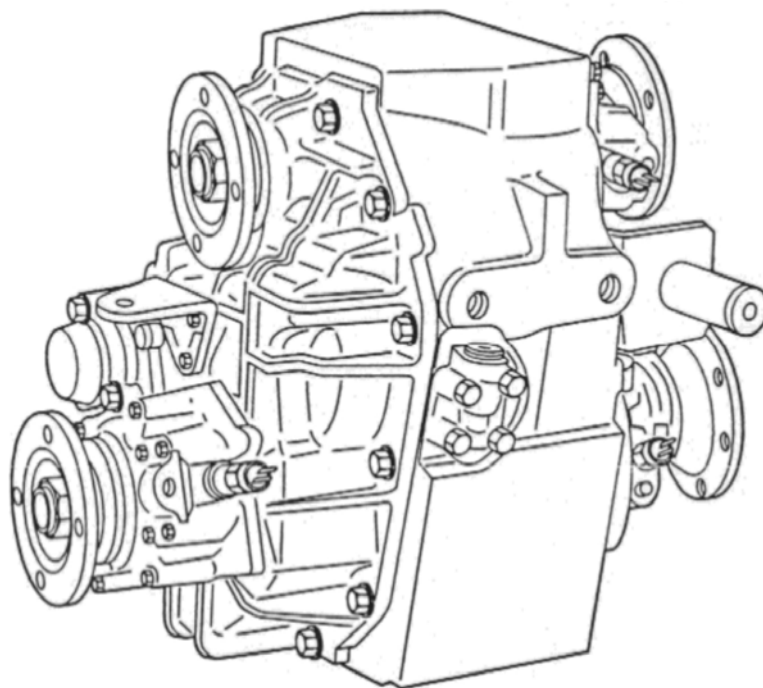


## PRODUCT PROFILE

# T 232 and T 600

## Transfer cases

All Wheel Drive and special applications trucks



**AxleTech International S.A.S**  
4 rue Jean Servanton - BP 656  
42042 Saint-Etienne - France  
Telephone: +33.477.92.88.00  
Telefax: +33.477.92.88.93

# TRANSFER CASE T232

Available ratios	High Speed Low Speed	1/1		0.9	
		1.95	2.45	1.85	2.07
Maximum input torque	mdaN	350		350	
		350	280	350	310
Maximum static input torque	mdaN	525		525	
		525	420	525	465

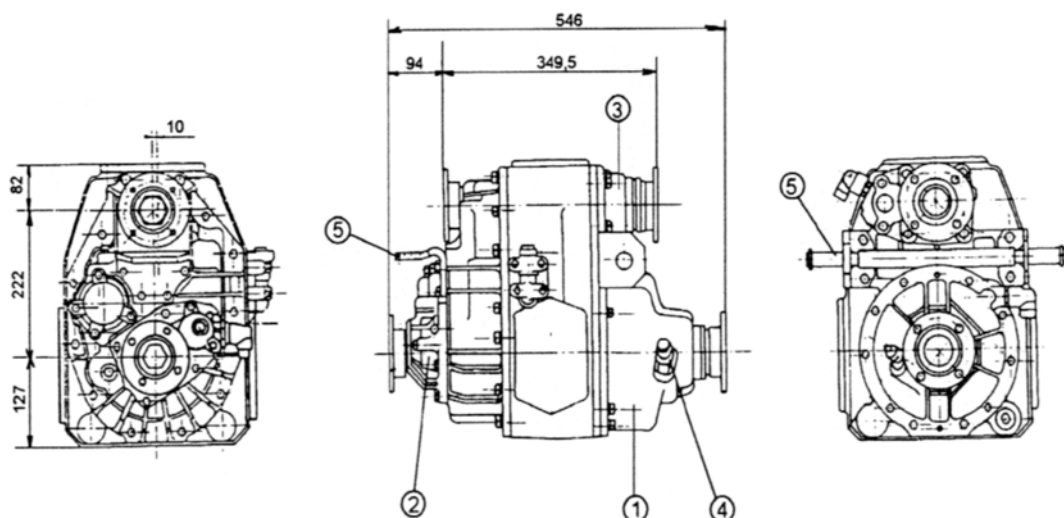
- Maximum input speed 3500 RPM
- Maximum power 150 HP (110 kW)
- With neutral shift gear
- Automatic safety shift control
- Air pressure shift operation 4.5 to 10 bar
- Shaft centre distance : 222 mm (8.74 in)
- Available with flanges SAE - DIN - "Cross Spline"
- Weight: - with split torque differential : 103 kg  
- without split torque differential : 95 kg
- Oil capacity with diff. | Without diff. |

## Available options:

- ① Longitudinal torque differential: 32.4% Front / 67.6% Rear  
pneum. lockable
- ② Air operated front output.  
Hydraulic PTO
- ③ Air operated PTO (Full torque capacity 350 mdaN)  
2/1 Overdrive PTO, locking in neutral position  
(Locking options and with positive clutch)
- ④ Speedometer drive ratio 7/11

## Transfer case suspension:

- ⑤ Suspension bar and front bracket



\*The T 232 allows towing without disconnection of propeller shafts when gear shift is in neutral position

# TRANSFER CASE T600

Available ratios	High Speed	1/1		0.9	
	Low Speed	1.93	2.45	1.93	2.45
Maximum input torque	mdaN	700		700	
		486	404	486	404
Maximum static input torque	mdaN	1050		1050	
		726	569	726	569

- Maximum input speed 3500 RPM
- Maximum power 250 HP (184 kW)
- With neutral gear shift
- Automatic safety shift control
- Air pressure shift operation 4.5 to 10 bar
- Shaft centre distance : 240 mm (9.45 in)
- Available with flanges SAE - DIN - "Cross Spline"
- Weight: - with split torque differential : 170 kg
- without split torque differential : 155 kg
- Oil capacity : With diff 4,5 l - Without diff. 3,7 l

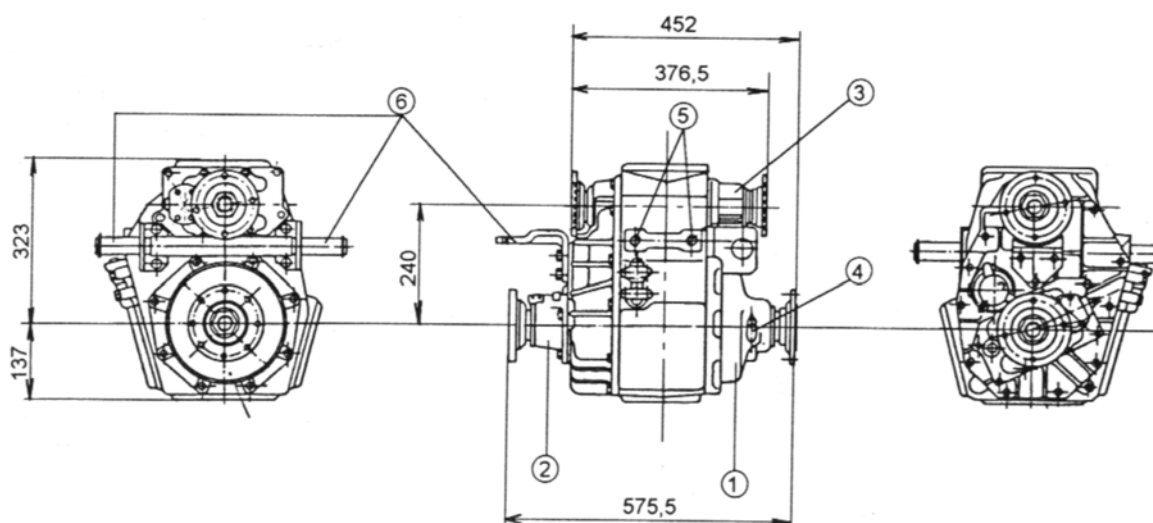
## Available options :

- ① Longitudinal torque differential: 32.4% Front / 67.6% Rear  
pneum. lockable
- ② Air operated front output.
- ③ Air operated PTO (Full torque capacity 600 mdaN)  
(Locking options and with positive dog clutch)
- ④ Speedometer drive ratio 6/12

## Transfer case suspension :

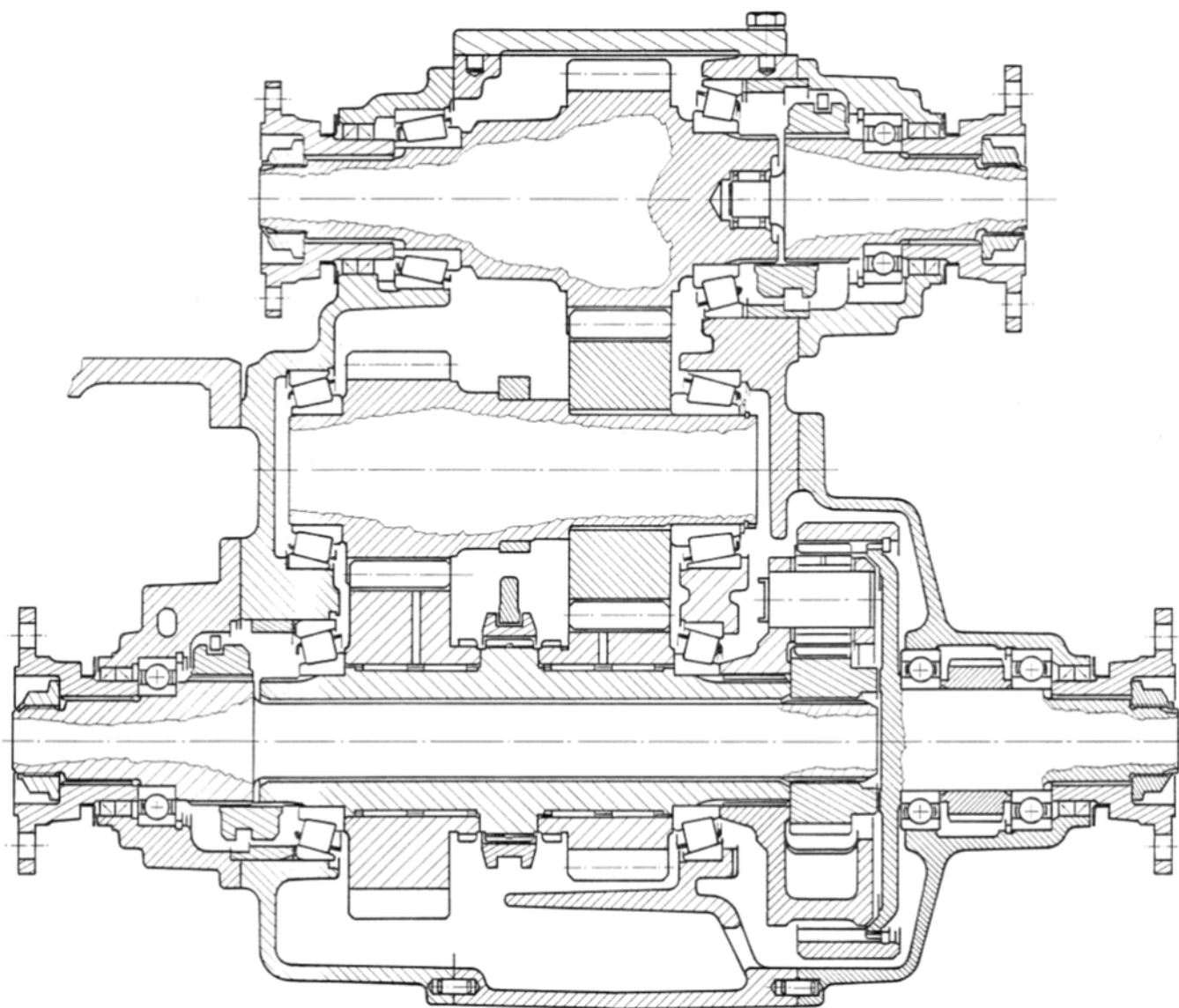
- ⑤ Side position (4 x M18 holes)
- ⑥ Suspension bar and front bracket

## Automatic Drive Train Management

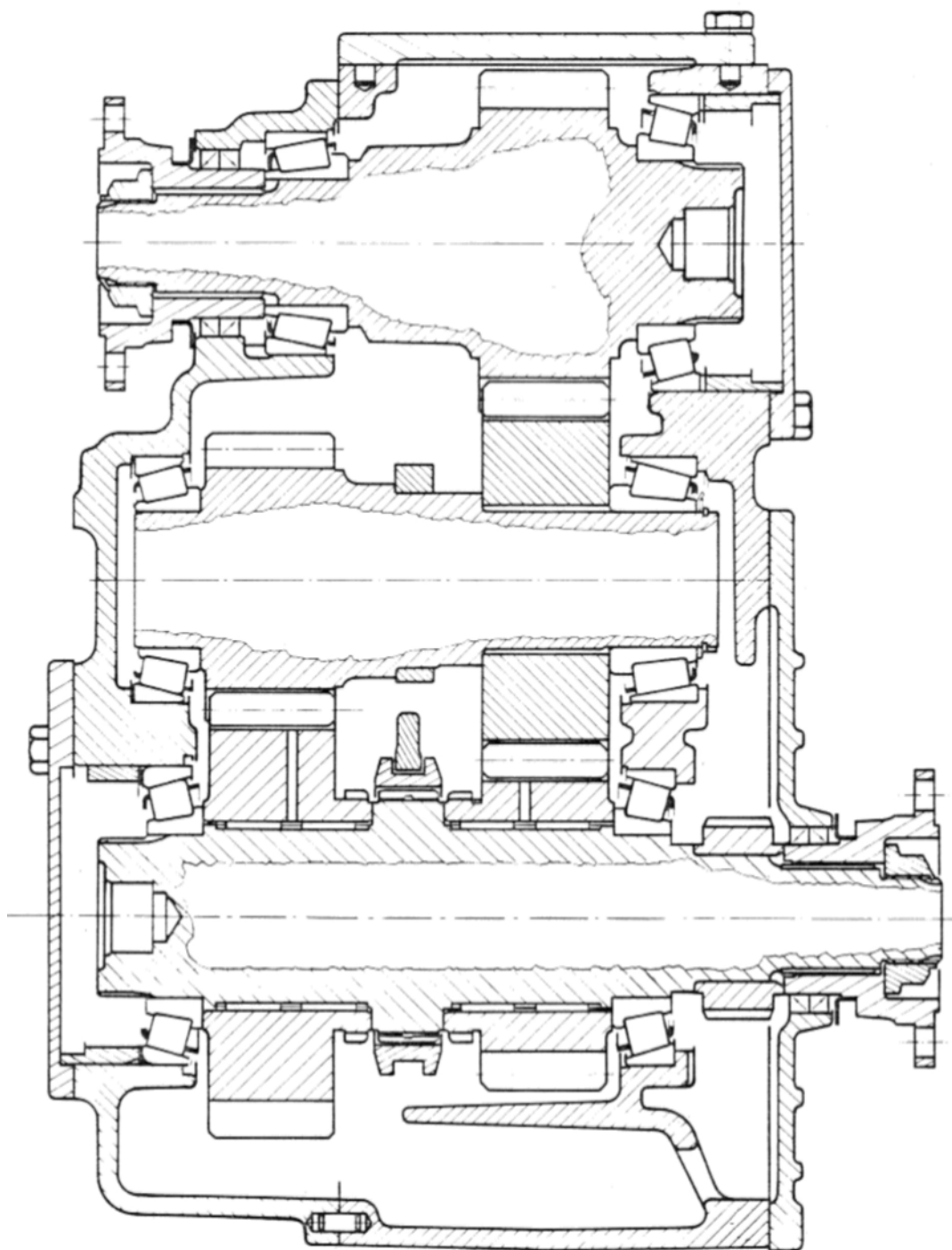


\*The T 600 allows towing without disconnection of propeller shafts when gear shift is in neutral position

# Transfer case with Options



## Transfer case without Option



Designs and specifications subject to change without notice